

**CERTIFIED CORNER RECORDATION**

Corner 1 | 6 T. 22N R. 19W P.M.M. Lake County  
T. 22N R. 20W P.M.M. Lake County

1905 G.L.O. Survey by William K. Trippet Book 4594 Page 28

"Set a sand stone, 14x12x6 ins., 10 ins. in the ground, for 1/4 sec. cor., marked 1/4 on W. face; dig pits, 18x18x12 ins., N. and S. of stone, 3 ft. dist.; and raise a mound of earth, 3 1/2 ft. base, 1 1/2 ft. high, W. of cor."

1978 Corner Recordation by Donald H. Wester (4130S)

"1/4 cor. (set) S.P. in RDWY, at record distance from relocated sec. cor. fits evidence of old Fc. line to West."

2000 Remonumentation by S. R. Smith

I find a #5 rebar with unreadable yellow plastic cap, set in center of county road, east of old fence corner. I find no remains of original corner or its accessories. At the position marked by the found #5 rebar, I set a standard M.D.O.H monument, which consists of a 2 1/4 ins (5.715 cm) diameter, 30 ins (76.2 cm) long aluminum pipe with flared base and 3/4 ins (8.255 cm) diameter M.D.O.H aluminum cap, stamped as shown below. I place the found #5 rebar inside the newly set monument. Top of aluminum cap is 4 ins (10 cm) below the road surface, from which:

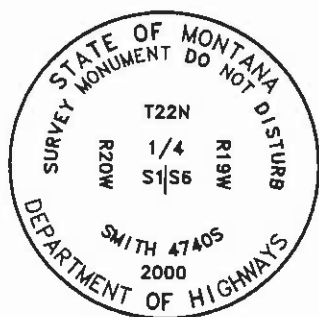
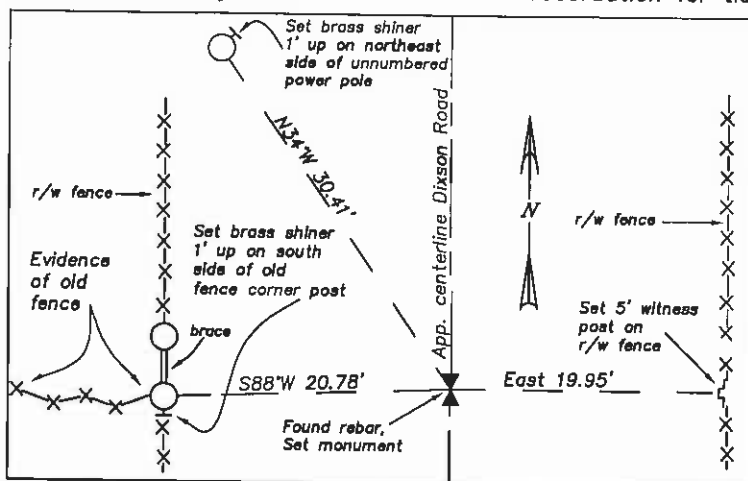
A 5 ft (1.524 m) long galvanized steel witness post with M.D.T survey decal attached, set on the east side of a r/w fence, bears East 19.95 ft (6.081 m) distant.

An old fence corner post, with a 1 5/8 ins (3.33 cm) diameter brass disc, marked "SMITH 4740LS", set 1 ft (30 cm) above ground on the south side, bears S88°W 20.78 ft (6.334 m) distant.

A power pole, un-numbered, with a 1 5/8 ins (3.33 cm) diameter brass disc, marked "SMITH 4740LS", set 1 ft (30 cm) above ground on the northeast side, bears N34°W 30.41 ft (9.269 m) distant.

Bearings listed above in remonumentation section were measured with a hand compass, declination 18° East.

Refer to the Certificate of Survey filed in conjunction with this corner recordation for ties to adjacent section controlling corners.



**SKETCH OF CORNER**

**CERTIFICATION**

I, Robert K. Wunderlich  
certify the information shown herein to be true and correct.  
*Robert K. Wunderlich*  
Signature Ground Party Chief

I, S. R. Smith  
certify that this Corner Record correctly represents work performed by me or under my direction in compliance with the "Corner Recordation Act" (70-2220) at Sec. 14C2.  
*S. R. Smith*  
Signature of Surveyor

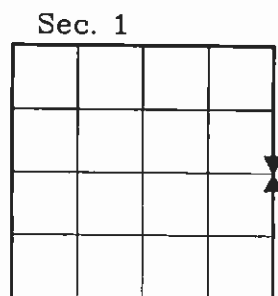
Date: 12/31/00 Reg. No. 4740LS  
Employer: Smith Surveying

Office of Clerk and Recorder, County of Lake. This "corner record" was filed for record on JUN 04 2001 1:24 PM

was noted on the cross-index plat and is assigned page No. 416245, in book No. C-2392 RUTH E. HODGES *Ruth E. Hodges*  
County Official

Cross Index No. C-1 T. 22N R. 19W P.M.M.  
Cross Index No. C-25 T. 22N R. 20W P.M.M.

Adopted July 1, 1981, Montana Board of Professional Engineers & Land Surveyors



corner this sheet  
stalling\polson-est\cornerrec4\109