

CERTIFIED LAND CORNER RECORDATION

DESCRIPTION OF CORNER EVIDENCE FOUND, AND ORIGINAL RECORD (IF KNOWN)

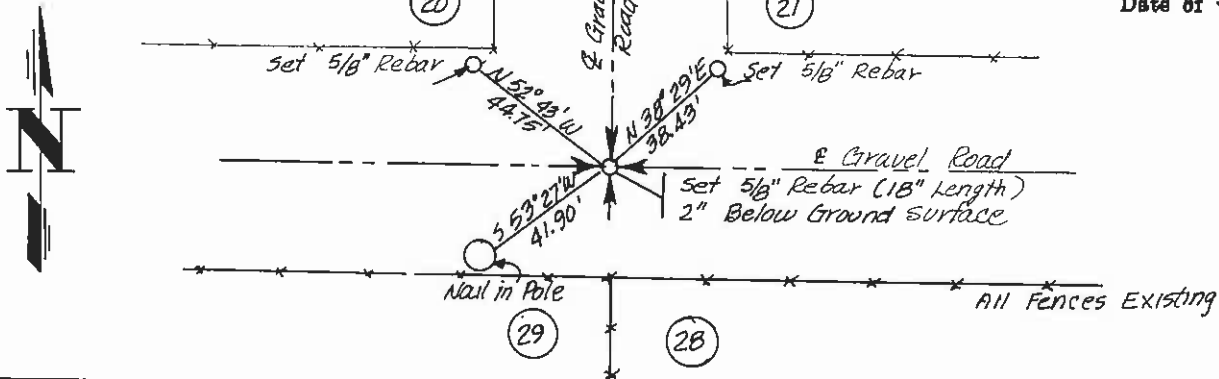
No evidence of original Corners or Accessories - Destroyed by Road Construction

Original Record:

Set a shale stone, 14x12x10 ins., 10 ins. in the ground, for cor. of Secs. 20,21,28 and 29, marked with 2 notches on S. and 4 notches on E. edge; dig pits, 18x18x12 ins., in each sec., 5 1/2 ft. dist.; and raise a mound of earth, 4 ft. base, 2 ft. high, W. of cor.

DESCRIPTION OF MONUMENT AND ACCESSORIES ESTABLISHED TO PERPETUATE THE ORIGINAL LOCATION OF THIS CORNER:

Date of work: MARCH 6, 1980



SKETCH, WITH COURSE AND DISTANCE TO ADJACENT CORNERS IF DETERMINED IN THIS SURVEY. (MAY SKETCH OR PASTE REPRODUCTION ON REVERSE SIDE.)

No adjacent corners used in this survey: Adjacent corners were searched for and not found.

Surveyor's Seal



I, _____ certify that the information shown herein is true and correct.

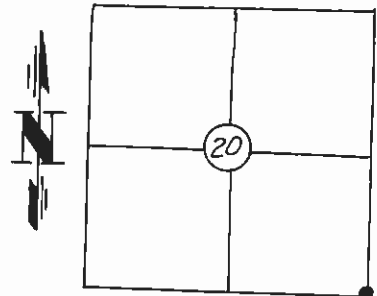
Signature of Ground Party Chief

I, LeRoy D. Zuck certify that I have carefully performed or reviewed the work done on the diagrammed corner as reported on this recordation form and approve the same.

Signature of Surveyor

DIAGRAM OF CORNER:

T 21 N R 20 W



1271ES Registration Number

of Clerk and Recorder; County of Lake, State of Montana

"corner record" was filed for record on the 10th day of June 1980 at 9:02 o'clock A.M.

ned microfile in book No. 255244

n 125-41328 C-1040

By: Roxanne Harbock, Deputy County Official

ETHEL M. HARDING CLERK & RECORDER

Cross Index No. R-9 T. 21 N R. 20 W Mer.