

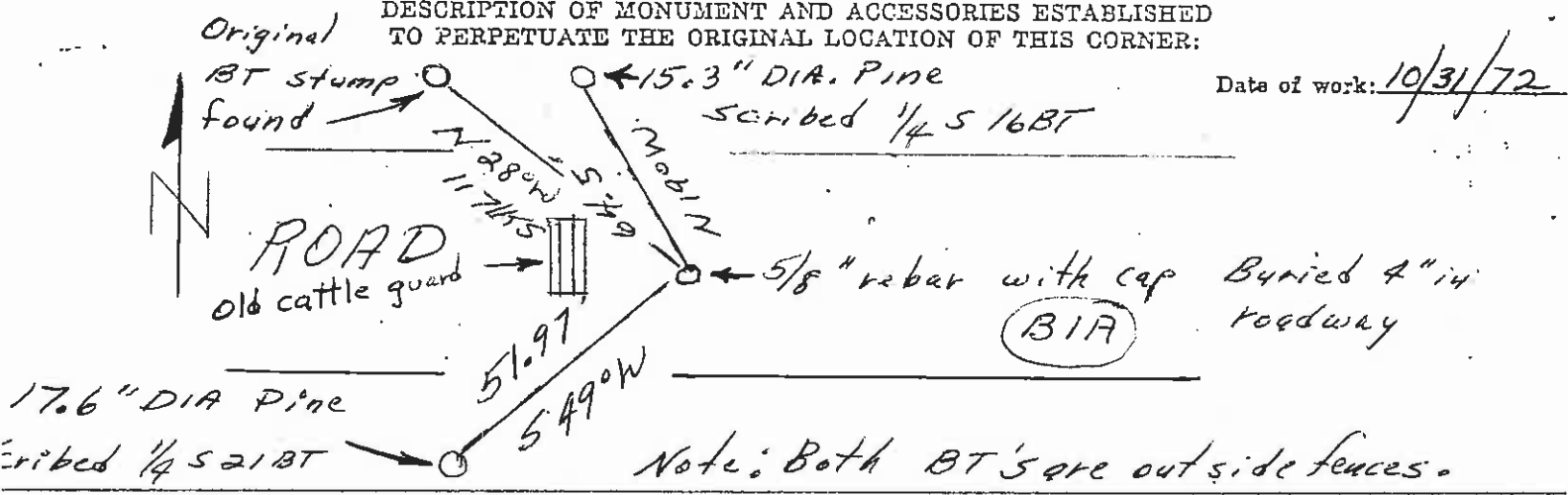
CERTIFIED LAND CORNER RECORDATION

207727

DESCRIPTION OF CORNER EVIDENCE FOUND, AND ORIGINAL RECORD (IF KNOWN)

Original record set a sandstone 14x9x7 10 ins in the ground, for 1/4 sec. corner, marked 1/4 on N face; from which, A Pine 30 ins diameter bears N28°W, 117 lks. dist. marked 1/4 S 16 BT. Found faint scribbling on face nailed to tree along with some barb wire. Tree has been cut and high stump is rotten. Record continued - A pine, 6 ins dia. bears S2°E 42 lks distant.

DESCRIPTION OF MONUMENT AND ACCESSORIES ESTABLISHED TO PERPETUATE THE ORIGINAL LOCATION OF THIS CORNER:



Date of work: 10/31/72

Note: Both BT's are outside fences.

SKETCH, WITH COURSE AND DISTANCE TO ADJACENT CORNERS IF DETERMINED IN THIS SURVEY. (MAY SKETCH OR PASTE REPRODUCTION ON REVERSE SIDE.)

Surveyor's Seal

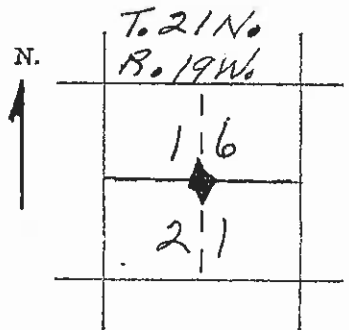
I, \_\_\_\_\_ certify that the information shown herein is true and correct.

Signature of Ground Party Chief

I, Christopher Balstad Jr. certify that I have carefully performed or reviewed the work done on the diagrammed corner as reported on this recordation form and approve the same.

Christopher Balstad Jr.  
Signature of Surveyor

DIAGRAM OF CORNER:



◆ = Corner recorded on the sheet

33225  
Registration Number

Office of Clerk and Recorder, County of Lake

JAN 26 1973

This "corner record" was filed for record on the \_\_\_\_\_ day of \_\_\_\_\_ 19\_\_\_\_, was noted on the cross-index plat and is

assigned page No. \_\_\_\_\_, in book No. C 308

ETHEL M. HARDING

County Official

Cross Index No. N-11 T. 21 N R. 19 W Mer.