

192717

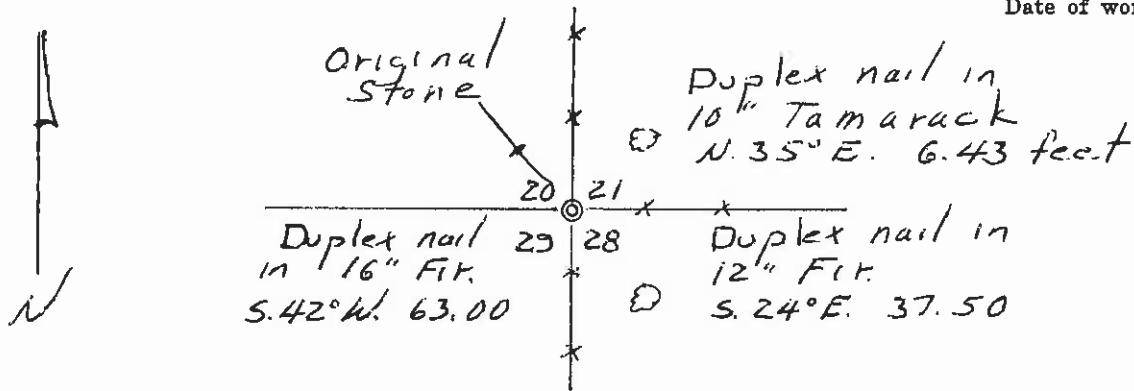
CERTIFIED LAND CORNER RECORDATION

DESCRIPTION OF CORNER EVIDENCE FOUND, AND ORIGINAL RECORD (IF KNOWN)

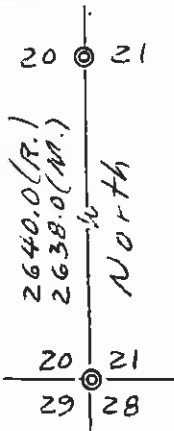
Found original stone (with proper markings) at base of corner fence post. No original B.T.'s found.

DESCRIPTION OF MONUMENT AND ACCESSORIES ESTABLISHED TO PERPETUATE THE ORIGINAL LOCATION OF THIS CORNER:

Date of work: 1966



SKETCH, WITH COURSE AND DISTANCE TO ADJACENT CORNERS IF DETERMINED IN THIS SURVEY. (MAY SKETCH OR PASTE REPRODUCTION ON REVERSE SIDE.)



Surveyor's Seal



I, _____ certify that the information shown herein is true and correct.

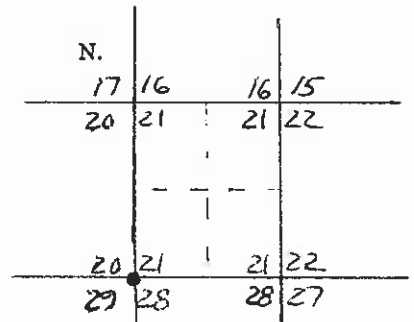
Signature of Ground Party Chief

I, HARRY P. MEDLAND certify that I have carefully performed or reviewed the work done on the diagrammed corner as reported on this recordation form and approve the same.

Harry P. Medland
Signature of Surveyor

22295
Registration Number

DIAGRAM OF CORNER:



• = Corner recorded on the sheet

T. 21 N.
R. 19 W.
M. P. M.

Office of Clerk and Recorder, County of Lake, Dawson, Montana

This "corner record" was filed for record on the 9 day of March 1920, was noted on the cross-index plat and is

assigned page No. 192717, in book No. 93 ETHEL M. HARDING CLERK & RECORDER Darlene Priggen Deputy County Official

Form 125 - 45227 Cross Index No. R-9 T. 21 R. 19 Mer.