

CERTIFIED LAND CORNER RECORDATION

DESCRIPTION OF CORNER EVIDENCE FOUND, AND ORIGINAL RECORD (IF KNOWN)

At the 1/4 corner common to Sections 8 & 9, T.20 N., R.26 W., Principal Meridian Montana:

Record: Set a post 4 1/2 ft. long, 4 inches square with marked stone 12" in the ground. Dug pits 18" x 18" x 12" North and South of post 5 1/2 ft. dist. Raised mound of earth 1 1/2 ft. high, 3 1/2 ft. base around it, from which: A pine 12 inches in diameter bears S58°E, 4 links distant.

Found: A pine stump in fence corner with evidence of blaze. No scribing ledgible.

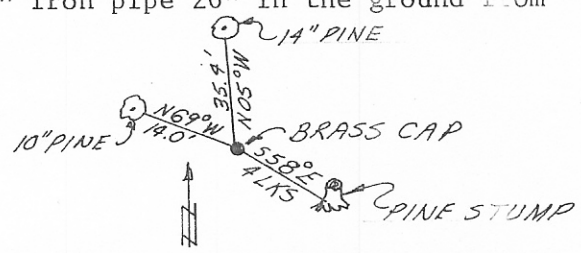
DESCRIPTION OF MONUMENT AND ACCESSORIES ESTABLISHED TO PERPETUATE THE ORIGINAL LOCATION OF THIS CORNER:

Date of work: Jan. 1975

I determine that the pine stump fits record bearings and distances within reason. Therefore, I accept the stump as being the original bearing tree and reposition the corner from record ties.

I set a 2" brass cap affixed to a 2 1/2" x 30" iron pipe 26" in the ground from Which:

- A 14" Pine bears N5°W, 35.4 feet distant. A 10" Pine bears N69°W, 14.0 feet distant.



SKETCH, WITH COURSE AND DISTANCE TO ADJACENT CORNERS IF DETERMINED IN THIS SURVEY. (MAY SKETCH OR PASTE REPRODUCTION ON REVERSE SIDE.)

See Certificate of Survey Number 76 for ties to other corners.

Surveyor's Seal



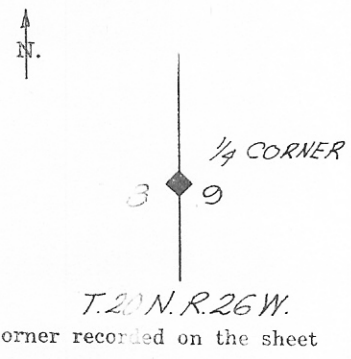
I, James R. Weatherly, certify that the information shown herein is true and correct.

Signature of Ground Party Chief

I, Gordon E. Sorenson, certify that I have carefully performed or reviewed the work done on the diagrammed corner as reported on this recordation form and approve the same.

Signature of Surveyor

DIAGRAM OF CORNER:



134264

2345ES Registration Number

Office of Clerk and Recorder, County of Sanders at 8:30 a.m.

This "corner record" was filed for record on the 17th day of March, 1975, was noted on the cross-index plat and is

assigned page No. 439, in book No. 1

County Official by Dixie Wright, Clerk