

**CERTIFIED LAND CORNER RECORDATION**

DESCRIPTION OF CORNER EVIDENCE FOUND, AND ORIGINAL RECORD (IF KNOWN)

*Record: A post 4 1/2 feet x 2" square with a marked stone 12" in the ground. Dug pits 18x18x12 inches in each section and raised a mound around the corner. A 10" pine bears N84°30'W, 35 links. A 12" pine bears S02°E, 28 links.*

*Found: Found what I accepted as the original BT in Sec. 20. No other evidence found since it was destroyed by an existing county road.*

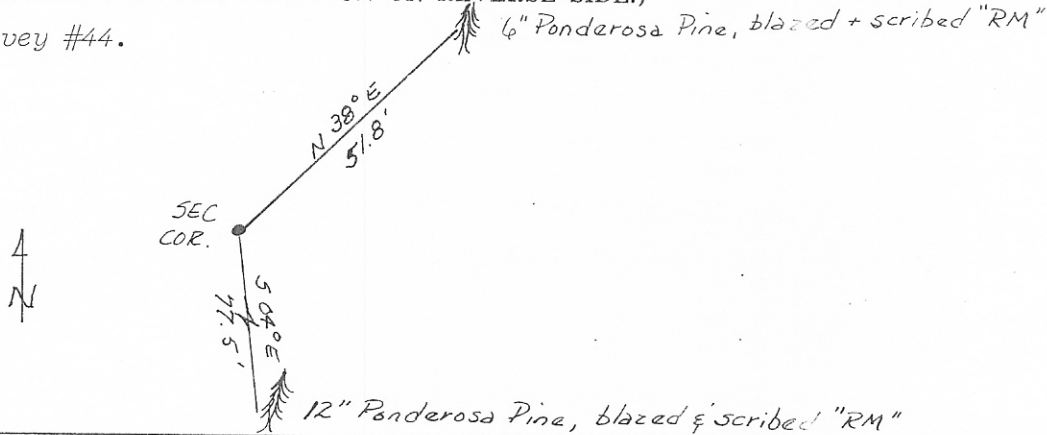
DESCRIPTION OF MONUMENT AND ACCESSORIES ESTABLISHED TO PERPETUATE THE ORIGINAL LOCATION OF THIS CORNER:

Date of work: 5/74

*At record bearing and distances from the BT in Sec. 20, I drove a 5/8" rebar into the asphalt and set a yellow cap stamped Sorenson & Company on the rebar. A 6" Ponderosa Pine bears N38°E, 51.8'. A 12" Ponderosa Pine bears S04°E, 77.5'. Both trees are blazed and scribed RM.*

SKETCH, WITH COURSE AND DISTANCE TO ADJACENT CORNERS IF DETERMINED IN THIS SURVEY. (MAY SKETCH OR PASTE REPRODUCTION ON REVERSE SIDE.)

*See Certificate of Survey #44.*



Surveyor's Seal



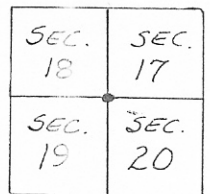
I, David R. Davis  
certify that the information shown herein is true and correct.

*David R. Davis*  
Signature of Ground Party Chief

I, Gordon E. Sorenson  
certify that I have carefully performed or reviewed the work done on the diagrammed corner as reported on this recordation form and approve the same.

*Gordon E. Sorenson*  
Signature of Surveyor

DIAGRAM OF CORNER:



T. 20 N., R. 26 W.

• = Corner recorded on the sheet

2345ES  
Registration Number

133082

Office of Clerk and Recorder, County of Sandwich 11:29 a.m.

This "corner record" was filed for record on the 8 day of Oct, 1974, was noted on the cross-index plat and is assigned page No. 409, in book No. 1. *Doris Thught by Linda Brown Dep*  
County Official