

1. Original and/or subsequent record used to evaluate the corner position.
2. Description of evidence found, note discrepancies in the record, state method of establishing lost or obliterated corners.
3. Description of monument and accessories set to perpetuate the corner position.
4. Sketch of corner, show all pertinent data which can best be shown in a sketch example, corner marking, topography ties, position of accessories, etc.
5. Certification must be signed and sealed by Registered Land Surveyor in State of Montana.
6. Fill in Cross Index & Section Diagram at bottom of sheet.

CERTIFIED CORNER RECORDATION

Corner 24 | 19 T. 20 N. R. 20 W. P.M.M. Lake County

GLO RECORD - 1905: Set a slate stone, 18x8x8 ins., 12 ins. in ground for $\frac{1}{4}$ sec. cor., marked $\frac{1}{4}$ on W. face, dug pits per instructions....

FOUND - 1989: We find no evidence of original stone or pits. Position falls in Hall Road (a County Road) and was no doubt destroyed by road const.

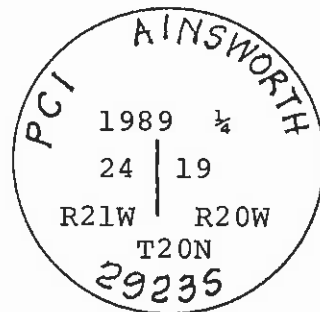
We re-establish this corner on a straight line between the Section corners to the North and South re-established by Wester, PLS 4130S, and in line with a fence line running to the West. We feel these occupation lines are the best evidence of the original corner position.

To perpetuate this corner we set a 5/8" x 24" rebar with a 1 1/2" alum. cap stamped as indicated below, from which:

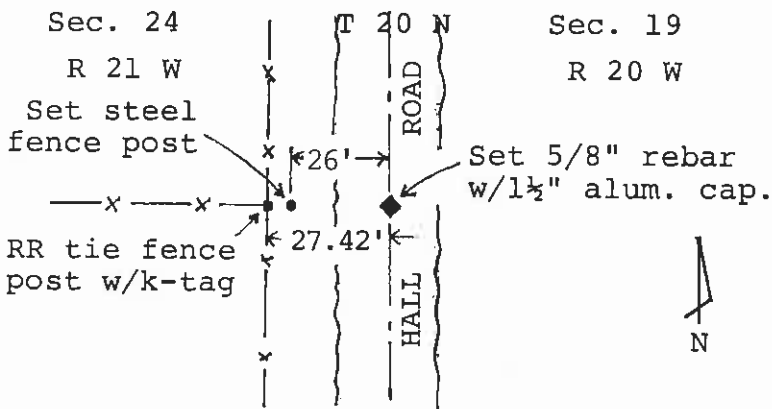
- * A flagged nail in a railroad tie fence post (fence runs North-South and West) bears West, 27.42 feet. Post marked w/K-tag.
- * A flagged nail in a power pole (lines run North-South) bears S.37°E., 43.8 feet. Pole marked with a K-tag.
- * A steel fence post bears 26.0 feet West.

Aluminum cap set 0.1' below the gravel surface of the County Road and falls near the centerline of said road.

See Certificate of Survey No. 4318



Markings on set aluminum cap.



SKETCH OF CORNER

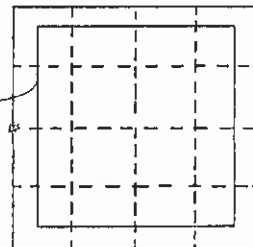
CERTIFICATION
 I, Duane Schmitz
 certify the information shown herein is true and correct.
Duane Schmitz
 Signature Ground Party Chief
 I, R.A. Ainsworth
 certify that this Corner Record correctly represents work performed by me or under my direction in compliance with the "Corner Recordation Act" (70-22-101, et seq., M.C.A.)
RICHARD A. AINSWORTH
 Signature of Surveyor & Seal
 Date: 12/89 Reg. No. 29235
 Employer: PROFESSIONAL CONSULTANTS, INCORPORATED
P.O. Box 3416 - Missoula

Office of Clerk and Recorder, County of Lake This "corner record"

was filed for record on the 20th day of Dec 1989, at 11:31, was noted on the cross-index plat and

a-1693 microfile Judy Ann Allen
 # **321695** County Official

N/C Cross Index No. P1 T. 20N R. 20W. P.M.M.



• - corner this sheet