

CERTIFIED LAND CORNER RECORDATION

208204

Lake County

DESCRIPTION OF CORNER EVIDENCE FOUND, AND ORIGINAL RECORD (IF KNOWN)

Original record: Set a sand stone, 16x9x8 inches 11 inches in the ground, for corner of sections 19, 20, 29 and 30, marked with 2 notches on south and 5 notches on east edge; from which; A pine, 36 inches in diameter, bears N58°E 297 links distance, marked T20N R19W S20BT .  
 A pine, 36 inches in diameter, bears S59°E ,188 links distance marked T20N R19W S29 BT  
 A pine 6 inches in diameter bears, S64°W , 271 links distance marked T20N R19W S 30 BT .  
 A pine 26 inches in diameter, bears N62°W , 108 links distance, marked T20N R19W S19 BT.

Found: The original bearing tree for section 19 is standing and the original scribing is plainly visible. The original stone was found lying alongside the fence. I found the bearing tree stump of section 20, but it has been burned and cut, no scribing visible. All the rest of the bearing trees have been destroyed.

DESCRIPTION OF MONUMENT AND ACCESSORIES ESTABLISHED, TO PERPETUATE THE ORIGINAL LOCATION OF THIS CORNER:

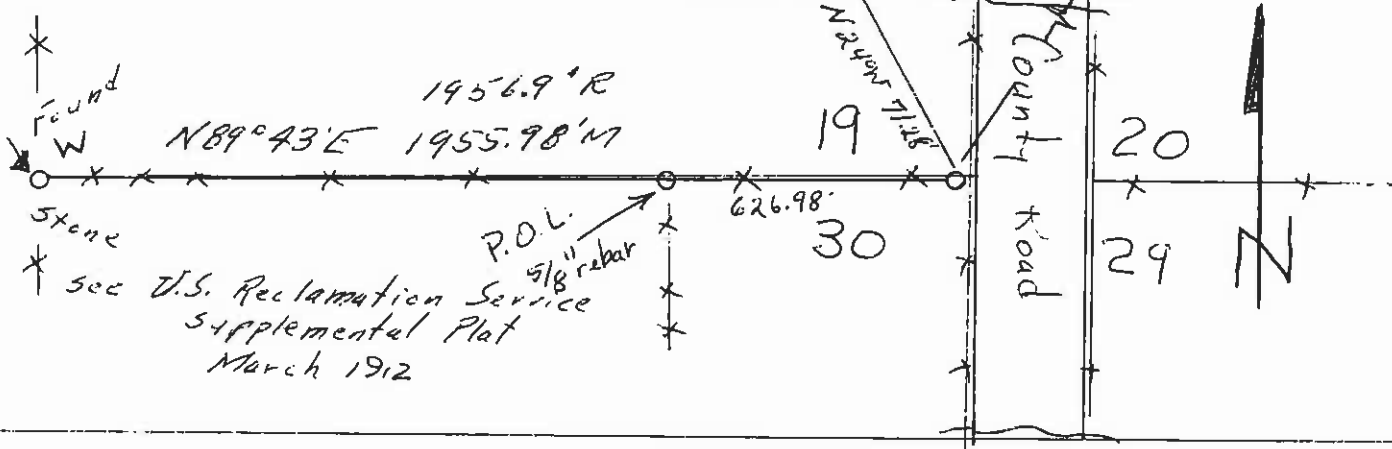
Date of work: 2/16/73

I reset the original stone, using the two bearing trees. The bearings donot check with the ones given by the G.L.O.. A one inch pipe is set on the east side of the stone. The P.O.L. was set on line for future reference.

30" Pine Scribing visible

Found 40" approx pine stump

SKETCH, WITH COURSE AND DISTANCE TO ADJACENT CORNERS IF DETERMINED IN THIS SURVEY. (MAY SKETCH OR PASTE REPRODUCTION ON REVERSE SIDE.)



Surveyor's Seal

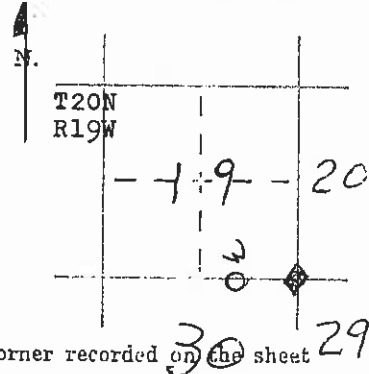
I, \_\_\_\_\_  
 certify that the information shown herein is true and correct.

Signature of Ground Party Chief

I, Christopher Balstad Jr.  
 certify that I have carefully performed or reviewed the work done on the diagrammed corner as reported on this recordation form and approve the same.

*Christopher Balstad Jr.*  
 Signature of Surveyor

DIAGRAM OF CORNER:



◆ = Corner recorded on sheet 29

33225  
 Registration Number

Office of Clerk and Recorder, County of Lake  
 This "corner record" was filed for record on the FEB 28 1973 day of February 1973, was noted on the cross-index plat and is signed page No. 208204, in book No. C-319  
 ETHEL M. HARDING  
 County Official  
 Cross Index No. R-5 T. 20N R. 19W Mer.