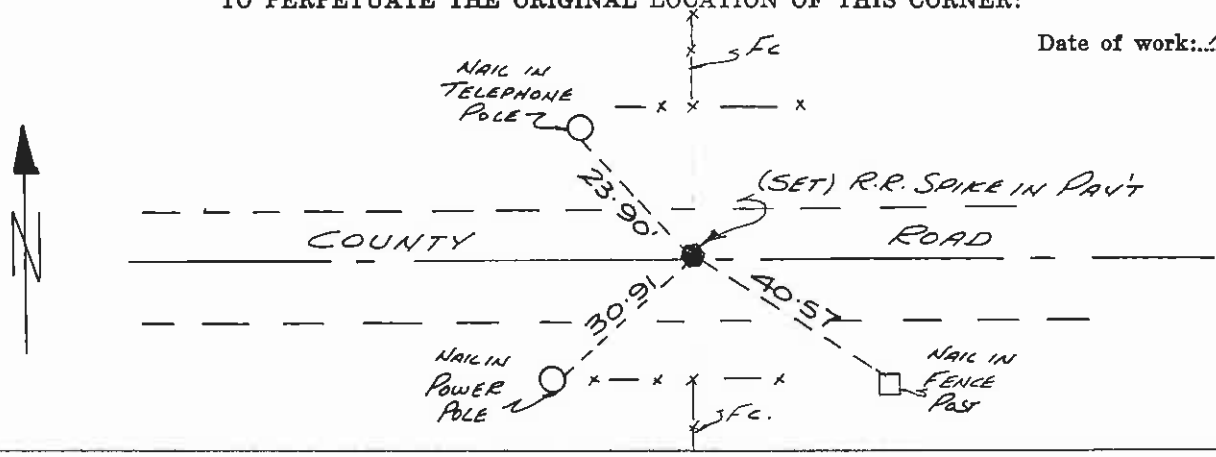


DESCRIPTION OF CORNER EVIDENCE FOUND, AND ORIGINAL RECORD (IF KNOWN)

*No EVIDENCE OF ORIGINAL - CORNER DESTROYED BY CONSTRUCTION OF COUNTY ROAD.*

DESCRIPTION OF MONUMENT AND ACCESSORIES ESTABLISHED TO PERPETUATE THE ORIGINAL LOCATION OF THIS CORNER:

Date of work: *April 17, 1974*



SKETCH, WITH COURSE AND DISTANCE TO ADJACENT CORNERS IF DETERMINED IN THIS SURVEY. (MAY SKETCH OR PASTE REPRODUCTION ON REVERSE SIDE.)

*SEE - REVERSE*

STATE OF MONTANA }  
 County of Lake } 38  
 Filed on the 22 day of July  
 A. D. 1974 at 3:55 o'clock P.M.  
ETHEL M. HARDING  
 County Clerk and Recorder  
 By Margaret Baueggeman  
 Deputy  
 .50

STATE OF MONTANA, COUNTY OF LAKE  
 RECORDED AT \_\_\_\_\_ O'CLOCK \_\_\_\_\_ M., \_\_\_\_\_  
 MICROFILE \_\_\_\_\_ RECORDER \_\_\_\_\_  
 FEE \$ \_\_\_\_\_ BY \_\_\_\_\_ DEP \_\_\_\_\_

Surveyor's Seal



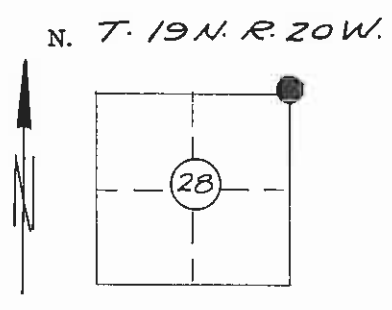
I, \_\_\_\_\_  
 certify that the information shown herein is true and correct.

Signature of Ground Party Chief

I, DONALD H. WESTER  
 certify that I have carefully performed or reviewed the work done on the diagrammed corner as reported on this recordation form and approve the same.

Donald H. Wester  
 Signature of Surveyor

DIAGRAM OF CORNER:



● = Corner recorded on the sheet

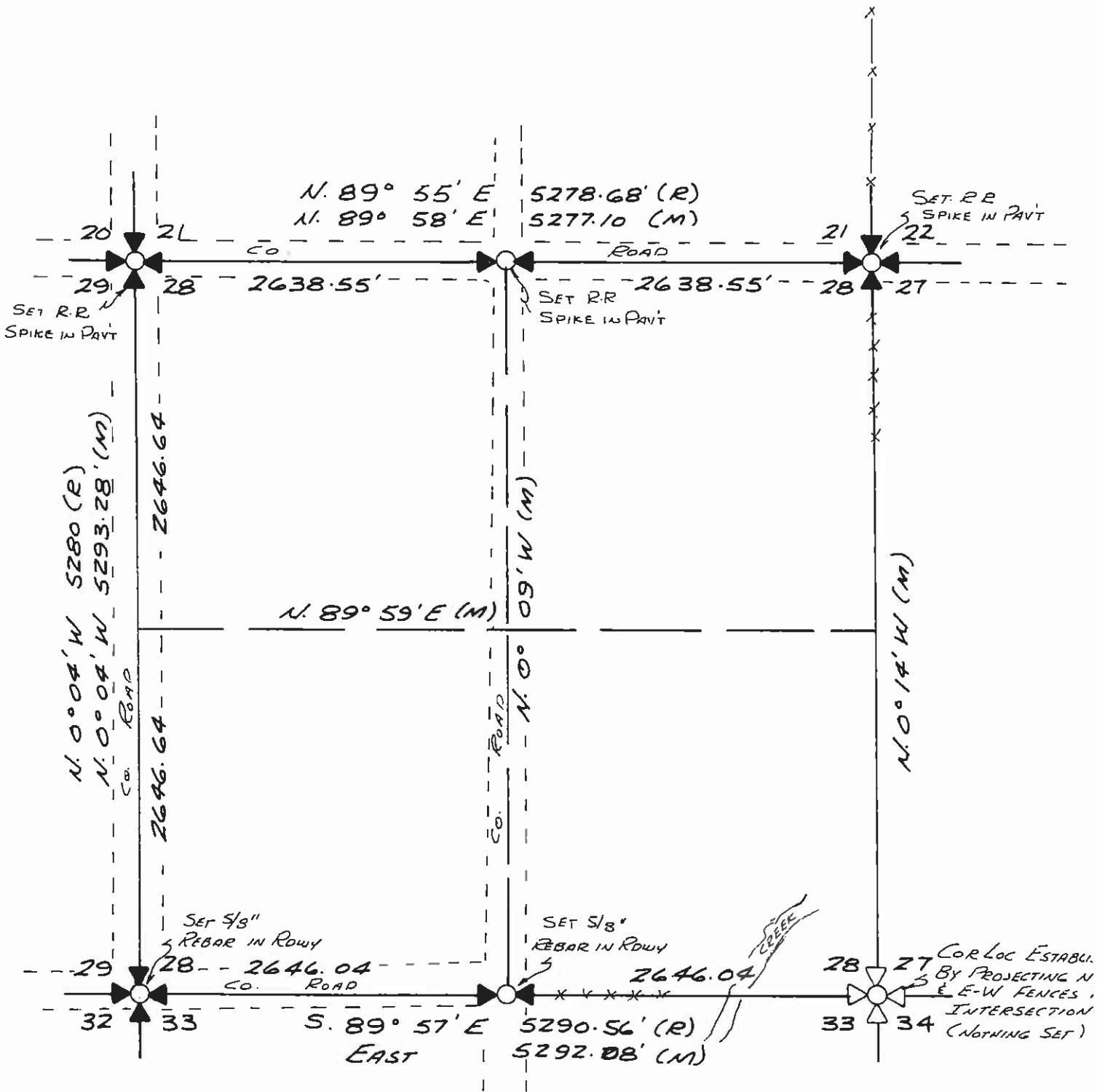
4130 S  
 Registration Number

Office of Clerk and Recorder, County of Lake

This "corner record" was filed for record on the 22 day of July, 1974, was noted on the cross-index plat and is signed page No. micro, in book No. 217923 at 3:58 p.m.  
ETHEL M. HARDING  
 County Clerk and Recorder  
Margaret Baueggeman  
 Deputy

C-500

Cross Index No. R-13 T. 19 N. R. 20 Mer.



Survey map showing property boundaries, roads, and bearings. Key features include: