

CERTIFIED LAND CORNER RECORDATION

DESCRIPTION OF CORNER EVIDENCE FOUND, AND ORIGINAL RECORD (IF KNOWN)

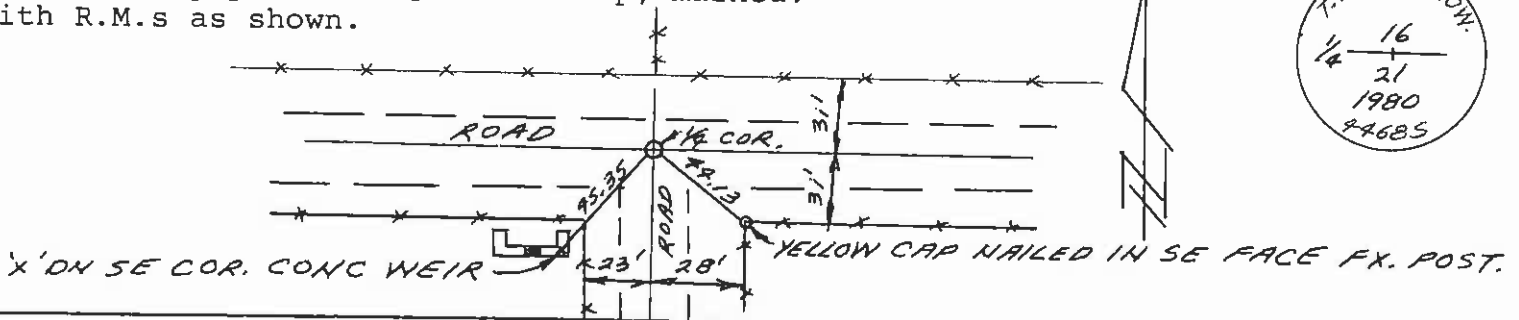
RECORD: (1905 GLO) Set a trap stone, 12 x 10 x 10 ins., 8 ins. in the ground, for 1/4 sec. cor., marked 1/4 on W. face, dig pits, 18 x 12 ins., E. and W. of stone, 3 ft. dist., and raise a mound of earth, 3 1/2 ft. base, 1 1/2 ft. high, N. of cor.

FOUND: No evidence found.

DESCRIPTION OF MONUMENT AND ACCESSORIES ESTABLISHED TO PERPETUATE THE ORIGINAL LOCATION OF THIS CORNER:

After extensive study of local land use lines I position this corner using occupation. At the corner position I bury a 24" x 2" pipe with 2 1/2" alum. cap, marked: with R.M.s as shown.

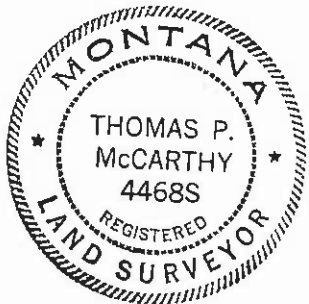
Date of work: 11-80



SKETCH, WITH COURSE AND DISTANCE TO ADJACENT CORNERS IF DETERMINED IN THIS SURVEY. (MAY SKETCH OR PASTE REPRODUCTION ON REVERSE SIDE.)

See reverse side.

Surveyor's Seal



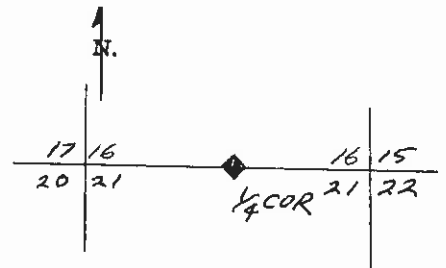
I, James T. Brugh certify that the information shown herein is true and correct.

Signature of James T. Brugh, Signature of Ground Party Chief

I, Thomas P. McCarthy certify that I have carefully performed or reviewed the work done on the diagrammed corner as reported on this recordation form and approve the same.

Signature of Thomas P. McCarthy, Signature of Surveyor

DIAGRAM OF CORNER:



T. 19 N., R. 20 W. = Corner recorded on the sheet

4468S Registration Number

Office of Clerk and Recorder, County of Lake, State of Montana

is "corner record" was filed for record on the 20th day of NOVEMBER 1980 at 4:12 P.M.

signed 258555, in book No. C-1087

Ethel M. Harding, Lake County Clerk & Recorder By: Harold W. Wilson, Deputy County Official