

CERTIFIED LAND CORNER RECORDATION

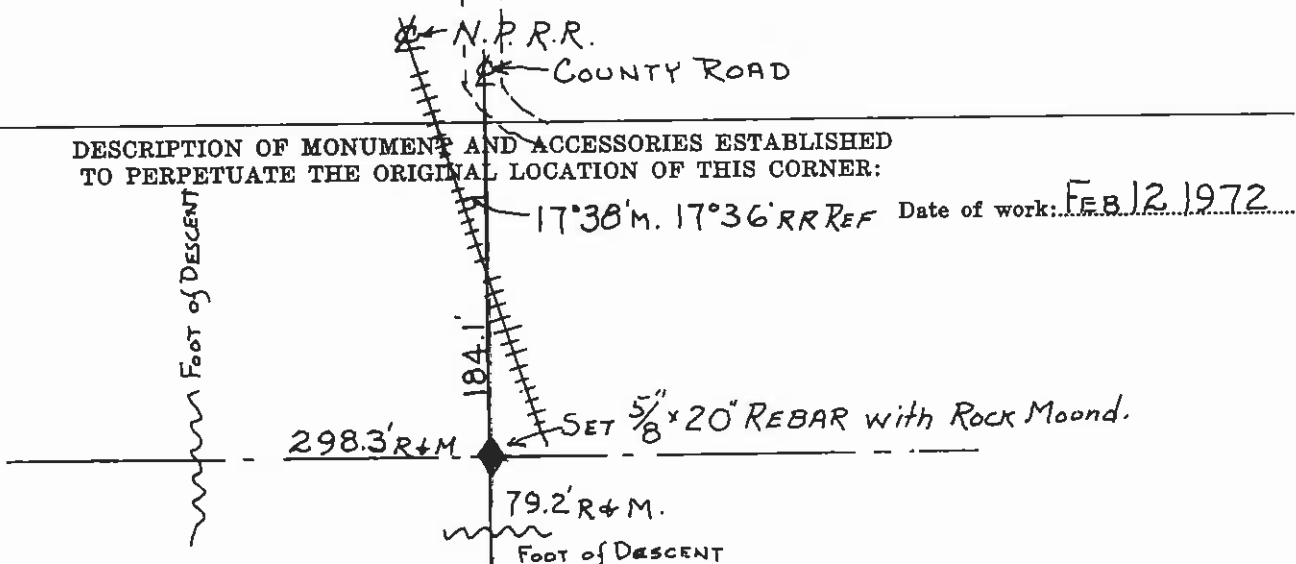
202758

DESCRIPTION OF CORNER EVIDENCE FOUND, AND ORIGINAL RECORD (IF KNOWN)

Found "Foot of Descent at 78.80 Ch" as called in original field notes for N-S line between Sections 19-20, T 19 N, R 20 W. Found "Foot of Descent at 73.53 Ch" as called in original field notes for E-W line between Sections 18 and 19, T 19 N, R 20 W. (Set a trap stone 18x6x6 inches 2 inches in the ground, for corner of Sections 17, 18, 19 and 20, marked with 3 notches on S. and 5 notches on E. edge; and raise a mound of stone covered with earth, 4 ft. base, 2 ft. high . of corner.)

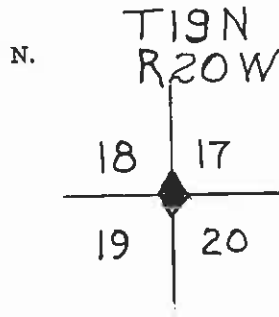
Due to construction of Northern Pacific Railroad, original corner monument and accessory obliterated. Section corner reestablished on basis of calls to the South and West considered as original terrain and best acceptable evidence.

DESCRIPTION OF MONUMENT AND ACCESSORIES ESTABLISHED TO PERPETUATE THE ORIGINAL LOCATION OF THIS CORNER:



SKETCH, WITH COURSE AND DISTANCE TO ADJACENT CORNERS IF DETERMINED IN THIS SURVEY. (MAY SKETCH OR PASTE REPRODUCTION ON REVERSE SIDE.)

DIAGRAM OF CORNER:



= Corner recorded on the sheet

Surveyor's Seal

I, _____ certify that the information shown herein is true and correct.

Signature of Ground Party Chief

I, Christopher Belstad Jr. certify that I have carefully performed or reviewed the work done on the diagrammed corner as reported on this recordation form and approve the same.

Christopher Belstad Jr.
Signature of Surveyor

33225
Registration Number

Office of Clerk and Recorder, County of Lake

This "corner record" was filed for record on the 20 day of March 1972 11:30 a.m. was noted on the cross-index plat and is assigned page No. _____, in book No. C-244 Ethel M. Harding Jewell Bantz County Official

Cross Index No. N-5 T. 19 N R. 20 W Mer.