

CERTIFIED LAND CORNER RECORDATION

DESCRIPTION OF CORNER EVIDENCE FOUND, AND ORIGINAL RECORD (IF KNOWN)

Original record.

Set a sand stone, 18 x 14 x 8 ins., 12 ins. in the ground, for cor. of
secs. 27, 28, 33, and 34, marked with 1 notch on S. and 3 notches on
E. edge; and raise a mound of stone, 2 ft. base, 1 1/2 ft. high, W.
of cor.

DESCRIPTION OF MONUMENT AND ACCESSORIES ESTABLISHED
TO PERPETUATE THE ORIGINAL LOCATION OF THIS CORNER:

Date of work: 9/16/75

Found:

Original stone as per above. Set a 2 1/2" brass cap on the west side of
the original stone.

SKETCH, WITH COURSE AND DISTANCE TO ADJACENT CORNERS IF DETERMINED IN THIS SURVEY.
(MAY SKETCH OR PASTE REPRODUCTION ON REVERSE SIDE.)

See reverse side

DIAGRAM OF CORNER:

Surveyor's Seal

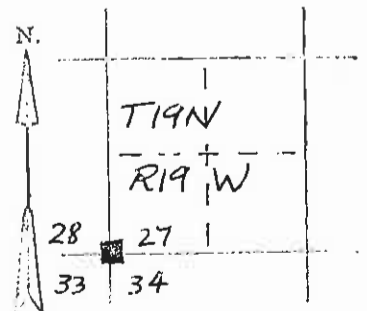
I, _____
certify that the information shown herein is true and
correct.

Signature of Ground Party Chief

I, Christopher Balstad Jr
certify that I have carefully performed or reviewed the
work done on the diagrammed corner as reported on this
recording form and approve the same.

Christopher Balstad Jr
Signature of Surveyor

33229
Registration Number



■ = Corner recorded on the sheet



Lake, State of Montana

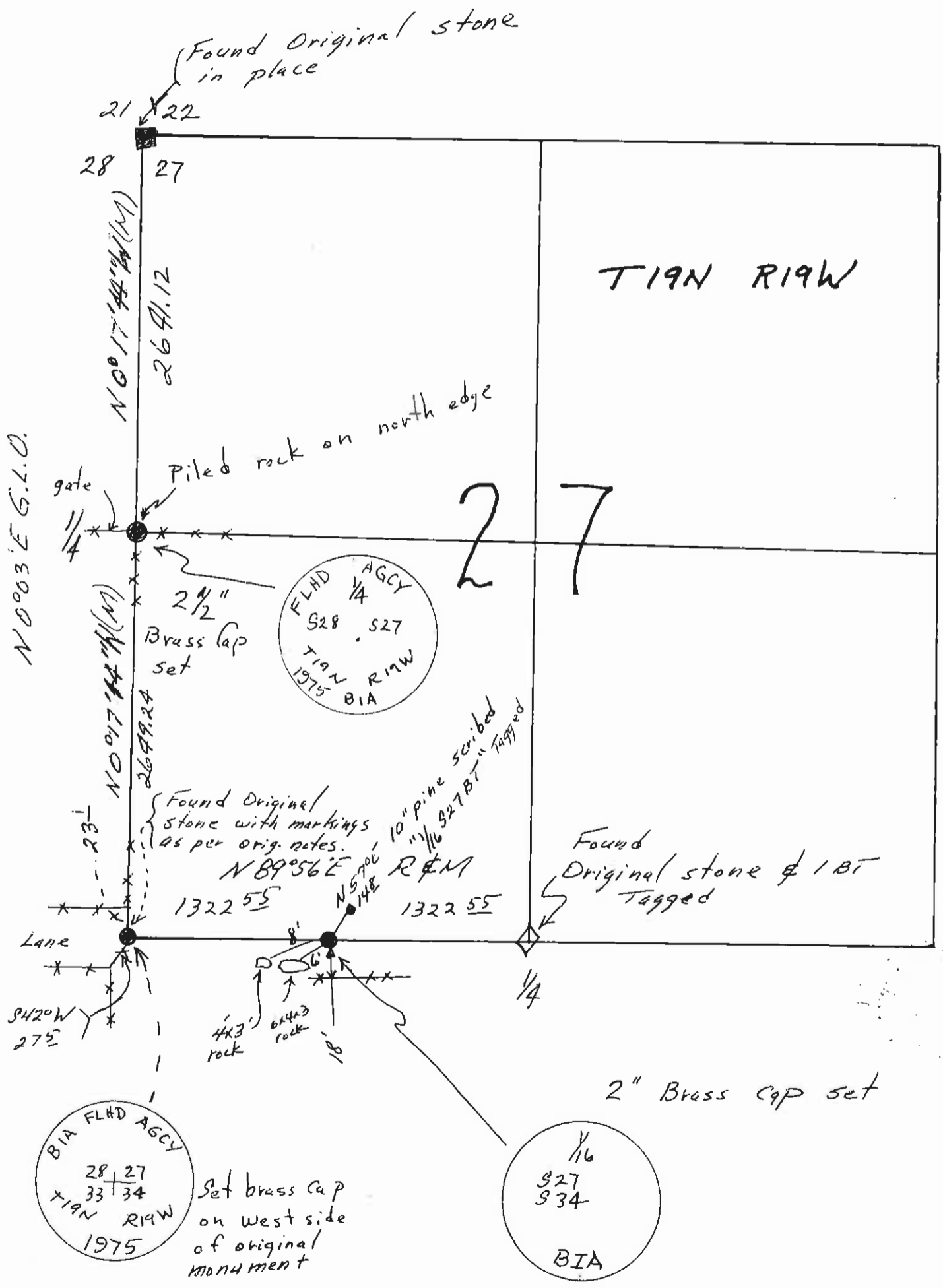
at 8:50 o'clock A.M.

"corner record" was filed for record on the 29th day of September 1975, was noted on the cross-index page and

filed in book No. 223791, in book No. C-598

Ethel M. Harding, Clerk & Recorder
County Official By Marie Williams Deputy

Cross Index No. V-13 T. 19 R. 19



Found Original stone
in place

21 X 22
28 27

N0017°44'44\"

2641.12

T19N R19W



N003°E G.L.O.

gate

Piled rock on north edge

27

FLHD AGCY
1/4
S28 . S27
T19N R19W
1975 BIA

2 1/2" Brass cap set

N0017°44'44\"

10" pine scribed
1/16 S27 BT Tagged

Found Original stone with markings as per orig. notes.

N89°56'E R & M

Found Original stone & 1 BT Tagged

1322 55

1322 55

Lane

S42°0'W
275'

4x3' rock
6x4x3' rock
8'

2" Brass cap set

BIA FLHD AGCY
28 | 27
33 | 34
T19N R19W
1975

Set brass cap on west side of original monument

1/16
S27
S34
BIA