

INSTRUCTIONS

1. Original and/or subsequent record used to evaluate the corner.
2. Description of evidence found, note discrepancies in the record, and of establishing lost or obliterated corners.
3. Description of monument and accessories set to perpetuate the corner position.
4. Sketch or corner, show all pertinent data which can best be shown in a sketch example, corner marking, topography ties, position of accessories, etc.
5. Certification must be signed and sealed by Registered Land Surveyor in State of Montana.
6. Fill in Cross Index & Section Diagram at bottom of sheet.

CERTIFIED CORNER RECORDATION

Corner 1/4 1/12 T. 18N., R. 27W., P.M.M. Mineral County

(Record) Set a quartzite stone 16 x 8 x 5 ins., 11 ins. in the ground, for $\frac{1}{4}$ sec. cor., marked $\frac{1}{4}$ on N. face.

A pine, 24 ins. diam., bears N. 42° W. 25 lks. (16.50 ft.) dist., marked $\frac{1}{4}$ S BT.

A pine, 18 ins. diam., bears S. 30° E. 16 lks. (10.56 ft.) dist., marked $\frac{1}{4}$ S BT.

(Found) a stone 4 x 8 x 18 ins. lying on the ground with " $\frac{11}{4}$ " on face up covered by soil. See note below:

A depression bears N. 40° W., 16.5 ft. No evidence of the tree. Could not locate any evidence of S 12 BT.

Note: the found position agrees with a Broken Boundary Adj. position calculated using the 1906 retracement survey between the section corner for section 1 and 12 and the meander corner for section 11 and 12 and our found distance between the same corners.

We replaced the stone with a std. USDA aluminum cap 5" above the ground marked as shown:

Buried the stone alongside the pipe.

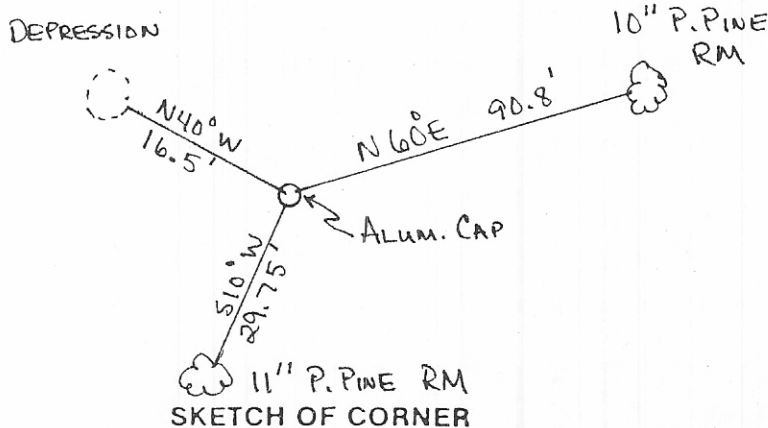
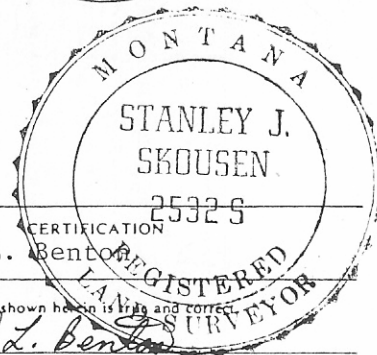
We established two RM trees described as follows:

A 10 inch diam. p. pine bears N. 60° E., 90.8 ft. scribed " $\frac{1}{4}$ S 1 RM".

An 11 inch diam. p. pine bears S. 10° W., 29.75 ft. scribed " $\frac{1}{4}$ S 12 RM".

Placed BT signs and Attention signs on the RM's.

Made a mound of stones north of the corner.



CERTIFICATION
 I, Ronald L. Benton
 certify the information shown herein is true and correct.
Ronald L. Benton
 Signature Ground Party Chief
 I, Stanley J. Skousen
 certify that this Corner Record correctly represents work performed by me or under my direction in compliance with the "Corner Recordation Act" (70-22-101), M.C.A.
Stanley J. Skousen
 Signature of Surveyor & Seal
 Date: 3/9/84 Reg. No. 25325
 Employer: U.S.F.S

Office of Clerk and Recorder, County of Mineral. This "corner record" was filed for record on the 27 day of Aug 1984, was noted on the cross-index plat and is assigned page No. _____, in book No. 62521.
Donna Davis
Shirley Mancini County Official

