

- INSTRUCTIONS**
1. Original and record used to evaluate the corner position.
  2. Description of corners, and, note discrepancies in the record, state method of establishing lost or obliterated corners.
  3. Description of monument and accessories set to perpetuate the corner position.
  4. Sketch or corner, show all pertinent data which can best be shown in a sketch example, corner marking, topography ties, position of accessories, etc.
  5. Certification must be signed and sealed by Registered Land Surveyor in State of Montana.
  6. Fill in Cross Index & Section Diagram at bottom of sheet.

## CERTIFIED CORNER RECORDATION

Corner 1/4 Sec.  $\frac{31}{6}$  T. 18 N. 27 W. R. 17 N. 27 W. P.M.M. Mineral County

RECORD: GLO 1893 Set a granite stone 14x12x8 ins., 10 ins. in the ground for 1/4 sec. cor. marked 1/4 on N. face; from which:

A fir 10 ins. diam. bears N 23 3/4° W, 149 lks. dist. marked 1/4 S.B.T.

A fir 11 ins. diam. bears S 34 1/2° E, 109 lks. dist., marked 1/4 S.B.T.

GLO 1906 The 1/4 sec. cor. bet. secs. 6 and 31, which is a stone marked as described by the Surveyor General, bearing trees destroyed. I mark new bearing trees as follows:

A tamarack 12 ins. dia., bears N. 66°45' W, 147 lks. dist., marked 1/4 S 31 B T.

A fir 14 ins. dia., bears S 22 1/2° E, 147 lks. dist., marked 1/4 S 6 B T.

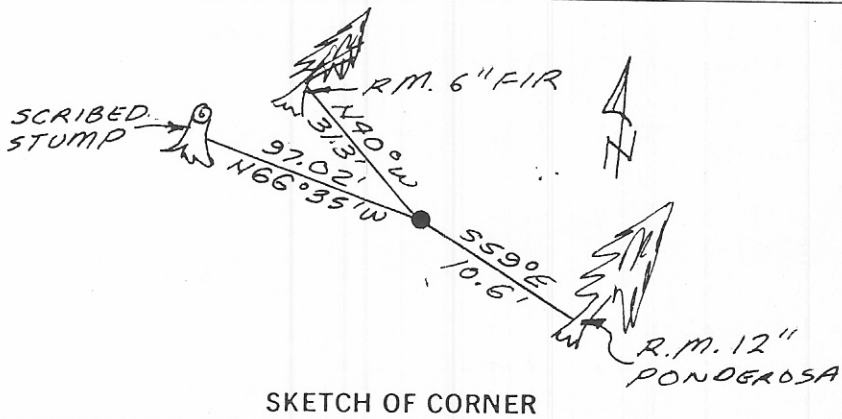
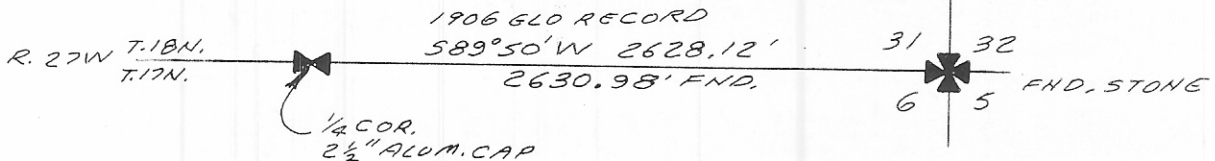
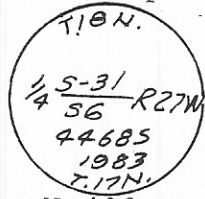
FOUND: 16" diam. sawed off stump, rotted in middle with scribing on southeast face 1/4 S 31 B T, no evidence of stone.

SET: 24"x2" pipe with 2 1/2" alum. cap 0.4 feet above ground in mound of rock, from B.T.;

Marked cap:

From which:

6" fir with spike bears N 40° W, 31.3 feet, 12" ponderosa pine with spike bears S 59° E, 10.6 ft.



SKETCH OF CORNER

CERTIFICATION

I, Paul O. Rossignol  
 certify the information shown herein is true and correct.  
*Paul O. Rossignol*  
 Signature Ground Party Chief

I, Thomas P. McCarthy  
 certify that this record correctly represents work performed by me or under my direction in compliance with the "Corner Recordation Act" (M.C.A. 7-2-101, et seq. M.D.A.)

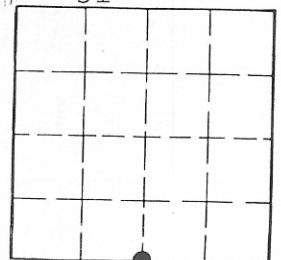
*Thomas P. McCarthy*  
 Signature of Surveyor & Seal

Date: 2/26/87 Reg. No. 44685  
 Employer: Sorenson & Company

Office of Clerk and Recorder, County of Mineral. This "corner record" was filed for record on the Feb. 26 day of 1987 was noted on the cross-index plat and is assigned page No. \_\_\_\_\_, in book No. \_\_\_\_\_

Shirley Mancini  
 County Official

Z-3                      18N    27W  
 Cross Index No. A-3                      T. 17N R. 27W P.M.M.



• - corner this sheet