

INSTRUCTIONS

1. Original and/or subsequent used to evaluate the corner position.
2. Description of evidence found to note discrepancies in the record, state method of establishing corners.
3. Description of monument and accessories set to perpetuate the corner position.
4. Sketch of corner, show all pertinent data which can best be shown in a sketch example, corner marking, topography ties, position of accessories, etc.
5. Certification must be signed and sealed by Land Surveyor registered in the State of Montana.
6. Fill in Cross Index & Section Diagram at bottom of sheet.

61-402369

CERTIFIED CORNER RECORDATION

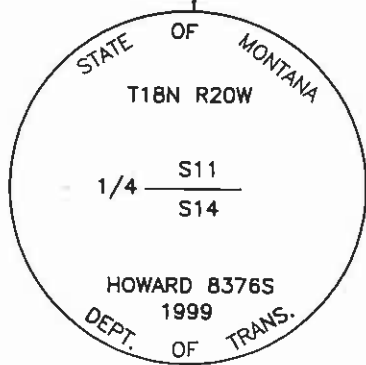
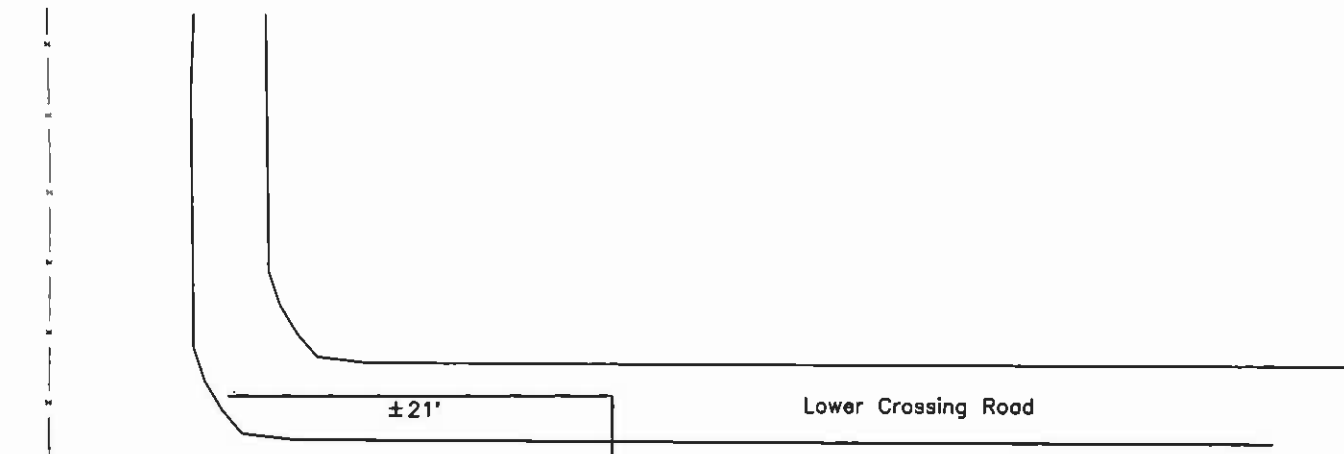
Corner: 1/4 Section Corner 11 & 14 T. 18N R. 20W P.M.M. Lake County

ORIGINAL RECORD: (1904 G.L.O.) Set a sandstone, 13x10x7 ins., 9 ins. in the ground marked 1/4 on N. face; from which:
 An aspen, 3 ins. diam., bears N75½°W, 95 lks. dist., marked "1/4 S11 BT"
 An aspen, 6 ins. diam., bears S72½°W, 92 lks. dist., marked "1/4 S14 BT"

SUBSEQUENT RECORD: See corner recordation #226137. no perpetuation done at that time.

EVIDENCE FOUND: Found a 12"x9"x5" stone with "1/4" on the N. face and a 1 1/4" YPC marked "BIA FLATHEAD" alongside.

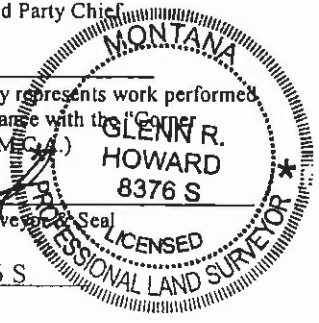
PERPETUATION: Set a 3 1/4" MDT aluminum cap on a 30" aluminum pipe in the position of the stone, with the stone buried alongside and the rebar inside the pipe. The cap is marked as shown in the sketch. From which;
 A fence post bears west, 0.4' distant; with a MARLS tag.



SKETCH OF CORNER

CERTIFICATION
 I, Carl R. Kluesner
 certify the information shown herein is true and correct.
Carl R. Kluesner 12447 Lsi
 Signature Ground Party Chief

I, Glenn R. Howard
 certify that this Corner Record correctly represents work performed by me or under my direction in compliance with the "Corner Recordation Act" (70-22-101, et seq., M.C.A.)
Glenn R. Howard
 Signature of Surveyor



Date: 8-31-99 Reg. No. 8376 S

Employer: DJ&A, P.C.

Office of Clerk and Recorder, County of Lake. This "corner record" was filed for record on SEP 1 1999 1:46 pm

was noted on the cross index plat and is assigned page No. 402369, in

book No. _____

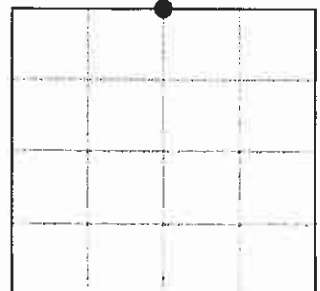
c-2274
71C

County Official

by: Judy Muniz dep

Cross Index No. J-19 T. 18N R. 20W PMM

Sec. 14



•- corner this sheet