

CERTIFIED LAND CORNER RECORDATION

208379

DESCRIPTION OF CORNER EVIDENCE FOUND, AND ORIGINAL RECORD (IF KNOWN)

RECORD - A SAND STONE 14X10X5 INS. 9 INS IN THE GROUND FOR 1/4 SEC. COR. MARKED 1/4 ON N. FACE - DIG PITS 18X18X12 INS. E AND W. OF STONE 3 FT. DIST AND RAISE A MOUND OF EARTH 3 1/2 FT. BASE 1 1/2 FT. HIGH N. OF CORNER.

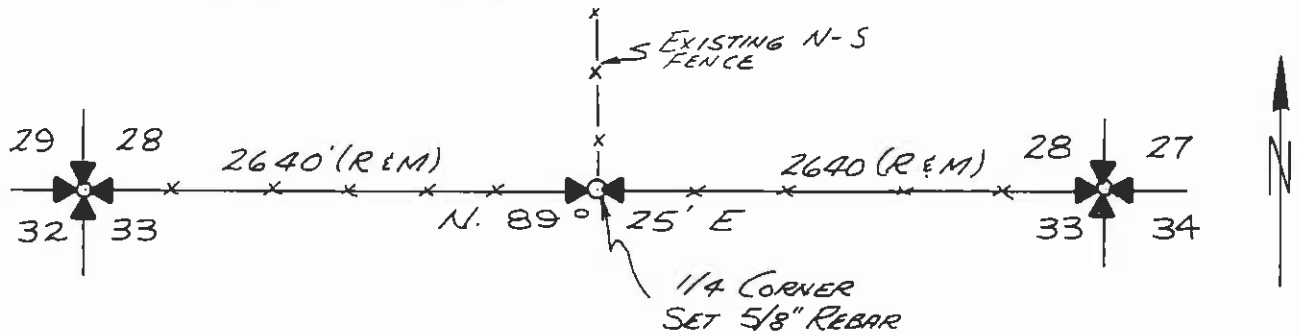
NO EVIDENCE OF ORIGINAL STONE OR ACCESSORIES FOUND.

DESCRIPTION OF MONUMENT AND ACCESSORIES ESTABLISHED TO PERPETUATE THE ORIGINAL LOCATION OF THIS CORNER:

Date of work: JAN., 1973

SET A 5/8" DIA REBAR 2'6" LONG 2'2" IN GROUND AT THE INTERSECTION OF THE NORTH-SOUTH AND EAST-WEST FENCES - SEE REVERSE SIDE FOR FURTHER DETAILS-

SKETCH, WITH COURSE AND DISTANCE TO ADJACENT CORNERS IF DETERMINED IN THIS SURVEY. (MAY SKETCH OR PASTE REPRODUCTION ON REVERSE SIDE.)



Surveyor's Seal

I, DONALD H. WESTER certify that the information shown herein is true and correct.

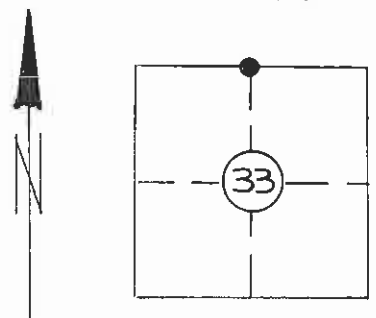
Donald H. Wester Signature of Ground Party Chief

I, Gilbert Dapp certify that I have carefully performed or reviewed the work done on the diagrammed corner as reported on this recordation form and approve the same.

Gilbert Dapp Signature of Surveyor

DIAGRAM OF CORNER:

T. 18 N. R. 19 W.



27395 Registration Number

Office of Clerk and Recorder; County of Lake

This "corner record" was filed for record on the MAR 9 1973 day of 1973, was noted on the cross-index plat and is assigned page No. 341, in book No. 1076 A W.

ETHEL M. HARDING County Official

Cross Index No. V-11 T. 18 N. R. 19 W. Mer.