

**INSTRUCTIONS**

1. Original and/or subsequent record used to evaluate the corner position.
2. Description of evidence found, note discrepancies in the record, state method of establishing lost or obliterated corners.
3. Description of monument and accessories set to perpetuate the corner position.
4. Sketch of corner, show all pertinent data which can best be shown in a sketch example, corner marking, topography ties, position of accessories, etc.
5. Certification must be signed and sealed by Land Surveyor registered in the State of Montana.
6. Fill in Cross Index & Section Diagram at bottom of sheet.

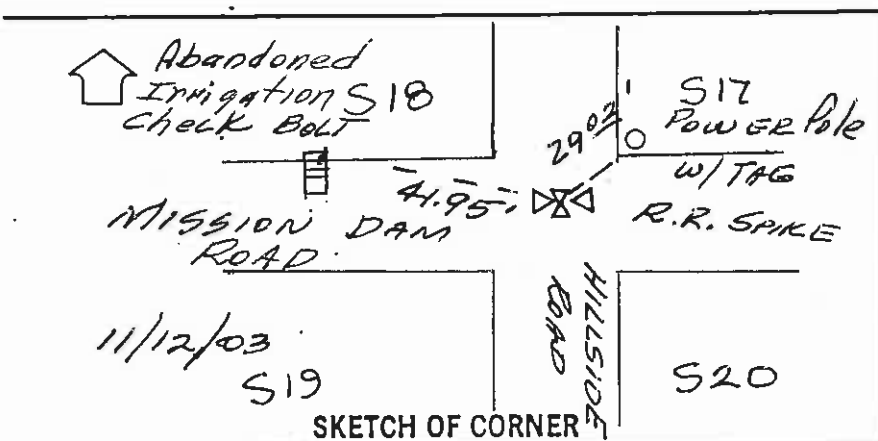
444156

**CERTIFIED CORNER RECORDATION**

Corner S17, 18, 19, 20 T. 18N R. 19W P.M.M. LAKE County

ORIGINAL RECORD: SET A SANDSTONE 14x9x7 INS. 9" IN THE GROUND FOR COR. OF SECTIONS 17, 18, 19 AND 20, MARKED WITH 3 NOTCHES ON S. AND 5 NOTCHES ON E. EDGE; AND RAISE A MOUND OF STONE, 2 FT. BASE, 1 1/2 FT. HIGH, W. OF COR.

FOUND: THE EAST END OF TRACT A, COS 5808 ME. SET RAIL ROAD SPIKE @ RECORD AS PER COS 5808. ROAD HAS BEEN GRAVELLED, TIED P. POLE W/TAG & HORIZ TAG TO BOLT IN IRRIGATION CHECK.



SKETCH OF CORNER

**CERTIFICATION**

I, \_\_\_\_\_ certify the information shown herein is true and correct.

Signature Ground Party Chief

I, CHRISTOPHER PALSTAD certify that this Corner Record correctly represents work performed by me or under my direction in compliance with the "Corner Recordation Act" (70-22-101, et seq., M.C.A.)

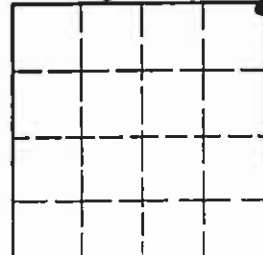
Signature of Surveyor & Seal

Date: 11/12/03 Reg. No. 32225

Employer: \_\_\_\_\_

Office of Clerk and Recorder, County of LAKE. This "corner record" was filed for record on JAN 14 2004 at 8:10 am was noted on the cross-index plat and is assigned page No. C-2529, in book No. \_\_\_\_\_, in RUTH E. HODGES County Official Pamela D. Repask, Deputy

Sec. 19



• - corner this sheet

Fee: N/C

Cross Index No. N5 T. 18N R. 19W P.M.M.