

INSTRUCTIONS

1. Original and/or subsequent record used to evaluate the corner.
2. Description of evidence found, note discrepancies in the record, method of establishing lost or obliterated corners.
3. Description of monument and accessories set to perpetuate the corner position.
4. Sketch of corner, show all pertinent data which can best be shown in a sketch example, corner marking, topography ties, position of accessories, etc.
5. Certification must be signed and sealed by Registered Land Surveyor in State of Montana.
6. Fill in Cross Index & Section Diagram at bottom of sheet.

19803

CERTIFIED CORNER RECORDATION

Corner 1/4 10/11 T. 17 N., R. 27 W., P.M.M. Mineral County

(Record) Set a quartzite stone, 14 x 6 x 6 ins., 10 ins. in the ground marked 1/4 on W. face.

A pine, 12 ins. bears N. 65° E., 30 lks. dist., marked 1/4 S BT.

A pine, 24 ins. bears S. 40° W., 50 lks. dist., marked 1/4 S BT.

(Found) A stone, 12 x 6 x 7 ins., lying on top of the ground, marked with 1/4 on one face.

Found no evidence of BT's.

Set a standard USDA aluminum cap at corner position using proportional distances from north and south section corner. Cap marked as shown:

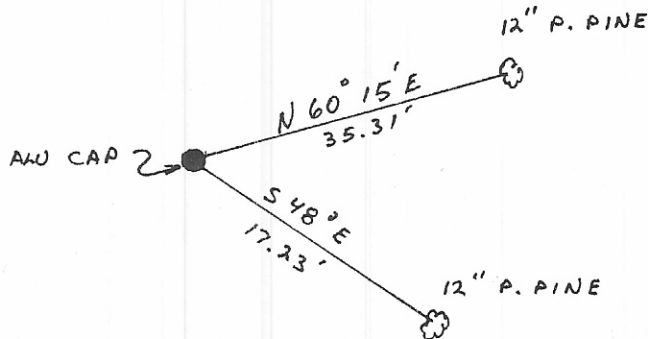
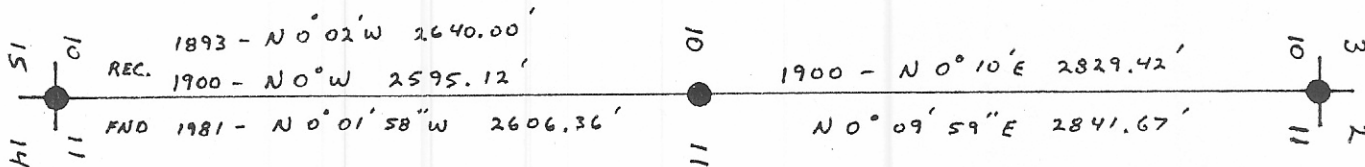
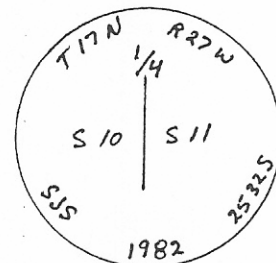
Buried stone alongside pipe.

Established two new RM trees described as follows:

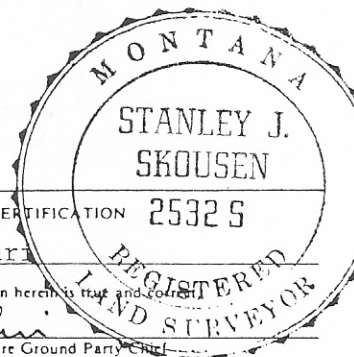
A 12 in. ponderosa pine bears S. 48° E. at 17.23 ft. dist., scribed "1/4 S 11 RM".

A 12 in. ponderosa pine bears N. 60° 15' E. at 35.31 ft. dist. scribed "1/4 S 11 RM".

Posted BT and Attention signs.



SKETCH OF CORNER



I, Eddo M. Fluri  
 certify the information shown herein is true and correct.  
*Eddo Fluri*  
 Signature Ground Party Chief

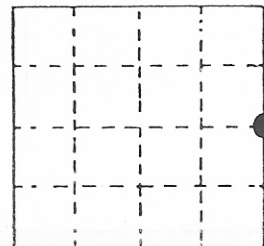
I, Stanley J. Skousen  
 certify that this Corner Record correctly represents work performed by me or under my direction in compliance with the "Corner Recordation Act" (70-22-101, et seq., M.C.A.)  
*Stanley J. Skousen*  
 Signature of Surveyor & Seal

Date: 4-4-83 Reg. No. 25325  
 Employer: USDA, Forest Service

Office of Clerk and Recorder, County of Mineral. This "corner record" was filed for record on the 8<sup>th</sup> day of April 1983, 9:02 AM was noted on the cross-index plat and is assigned page No. \_\_\_\_\_, in book No. \_\_\_\_\_ *Donna Klavis*

County Official

Sec. 1/4 10



58803

Cross Index No. G-17 T. 17 N., R. 27 W., P.M.M.