

INSTRUCTIONS

1. Original and/or subsequent used to evaluate the corner position
2. Description of evidence found. Note discrepancies in the record, state method of establishing lost or obliterated corners
3. Description of monument and accessories set to perpetuate the corner position.
4. Sketch of corner, show all pertinent data which can best be shown in a sketch example, corner marking, topography ties, position of accessories, etc
5. Certification must be signed and sealed by Land Surveyor registered in the State of Montana.
6. Fill in Cross Index & Section Diagram at bottom of sheet

61- 401832

CERTIFIED CORNER RECORDATION

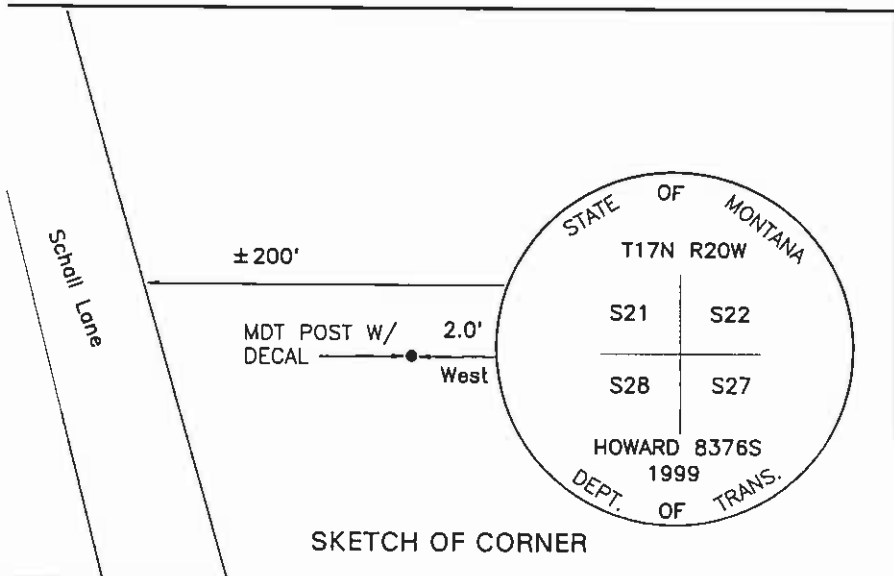
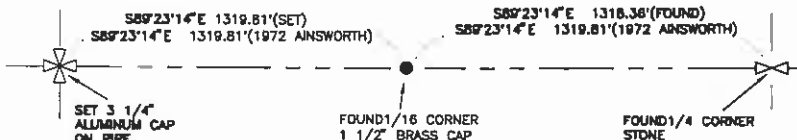
Corner: Section Corner 21, 22, 27, & 28 T. 17N R. 20W P.M.M. Lake County

ORIGINAL RECORD: (1904 G.L.O.) Set a sandstone, 18x6x6 ins., 12 ins. in the ground marked with 2 notches on S. and 3 notches on E. edge; From which;
 A 16" cottonwood bears N59.5°E, 15 lks. marked "T17N R20W S 22 BT"
 A 11" cottonwood bears S73°E, 169 lks. marked "T17N R20W S 27 BT"
 A 24" cottonwood bears S84.75°W, 22 lks. marked "T17N R20W S 28 BT"
 A 18" cottonwood bears N24°W, 76 lks. marked "T17N R20W S 21 BT"

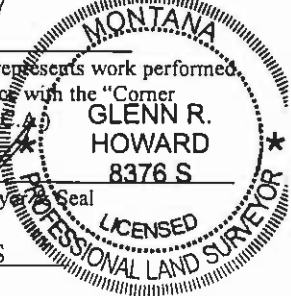
SUBSEQUENT RECORD: See corner recordation #231476. Set 24" copper clad moument with 2 RM's.

EVIDENCE FOUND: Found nothing, whole area logged and recontoured.

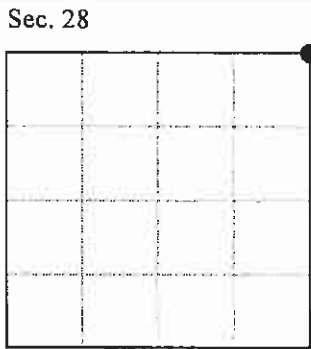
PERPETUATION: Set a 3 1/4" MDT aluminum cap on a 30" aluminum pipe by record from found monuments of Dependent resurvey of 1972 by R. A. Ainsworth. The cap is marked as shown in the sketch. From which;
 A steel fence post bears North, 2.0' distant; with a MARLS tag.



CERTIFICATION
 I, Gerald McCarthy
 certify the information shown herein is true and correct.
Gerald McCarthy
 Signature Ground Party Chief
 I, Glenn R. Howard
 certify that this Corner Record correctly represents work performed by me or under my direction in compliance with the "Corner Recordation Act" (70-22-101, et seq., M.C.A.)
Glenn R. Howard
 Signature of Surveyor
 Date: 8-9-99 Reg No. 8376 S
 Employer: DJ&A, P.C.



Office of Clerk and Recorder, County of Lake. This "corner record" was filed for record on AUG 11 1999 11:04 AM was noted on the cross index plat and is assigned page No. 401832, in book No. C-2258
RUTH E. HODGES
Ruth E. Hodges
 County Official



Cross Index No. R-13 T. 17N R. 20W PMM
 Adopted July 1, 1981, Montana Board of Professional Engineers & Land Surveyors
 •- corner this sheet

NC