

INSTRUCTIONS

1. Original and/or subsequent record used to evaluate the corner position.
2. Description of evidence found, note discrepancies in the record, state method of establishing lost or obliterated corners.
3. Description of monument and accessories set to perpetuate the corner position.
4. Sketch of corner, show all pertinent data which can best be shown in a sketch example, corner marking, topography ties, position of accessories, etc.
5. Certification must be signed and sealed by Land Surveyor registered in the State of Montana.
6. Fill in Cross Index & Section Diagram at bottom of sheet.

CERTIFIED CORNER RECORDATION

Corner Section 11, 12, 13 & 14 T. 17N R. 15W P.M.M. Powell County

ORIGINAL RECORD: (1896 G.L.O., William W. McElroy) Set a red sand stone, 16x8x6 ins., 12 ins. in the ground, marked with 4 notches on S. and 1 notch on E. edges; from which:
 A pine, 16 ins. diam., bears N67°E, 35 lks. dist., marked T17N R15W S 12 BT
 A larch, 10 ins. diam., bears S25°E, 28 lks. dist., marked T17N R15W S 13 BT
 A fir, 7 ins. diam., bears S72°W, 34 lks. dist., marked T17N R15W S 14 BT
 A pine, 12 ins. diam., bears N27°W, 20 lks. dist., marked T17N R15W S 11 BT

SUBSEQUENT RECORD: None.

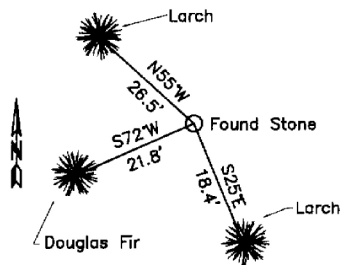
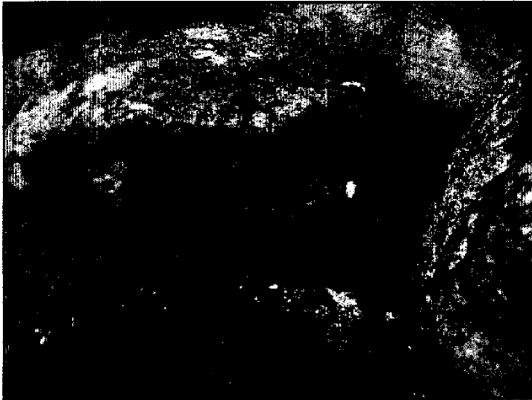
EVIDENCE FOUND: Found a 11x7x6" Stone marked with 4 notches on South and 1 notch on East edges from which:
 A 12" larch, bears S25°E, 18.4', with a grown over face blaze.
 A 9" douglas fir, bears S72°W, 21.8', with a grown over face blaze.

PERPETUATION: Left the stone in place and placed a ring of rock and dirt around the stone. Placed BT tags over a blaze on the face of the original BT trees and also placed a BT tag over a blaze on the following tree:
 A 25" larch, bears N55°W, 26.5'.

This corner falls on a westerly facing 15 % slope, being mostly old growth douglas fir and larch.
 It also is approximately 500' East of a wet creek bottom.

Decl. = 16°E

NAD83 coordinates for this corner:
 Latitude = 47°14'13.50"N Longitude = 113°27'47.88"W
 NOTE: These coordinates are to be used as a search tool only.



(Not to Scale)
 SKETCH OF CORNER

#157813

CERTIFICATION

I, Gary Little
 certify the information shown herein is true and correct.
Gary Little
 Signature Ground Party Chief

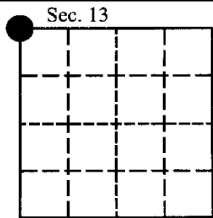
I, Kurt Luebke
 certify that this Corner Record correctly represents work performed by me or under my direction in compliance with the "Corner Recordation Act" (70-22-101, et seq. M.C.A.)
Kurt Luebke
 Signature of Surveyor & Seal

Date: October 11, 2005 Reg. No. 13237 LS

Employer: DJ&A P. C.

Office of Clerk and Recorder, County of Powell. This "corner record" was filed for record on OCTOBER 12, 2005 @ 11:45pm was noted on the cross index plat and is assigned page No. N/A, in book No. N/A

Karla M. Peterson
 County Official



• - corner this sheet

Cross Index No. J-21 T. 17N R. 15W PMM