

INSTRUCTIONS

1. Original and/or subsequent used to evaluate the corner position
2. Description of evidence found, note discrepancies in the record, state method of establishing lost or obliterated corners.
3. Description of monument and accessories set to perpetuate the corner position
4. Sketch of corner, show all pertinent data which can best be shown in a sketch example, corner marking, topography ties, position of accessories, etc.
5. Certification must be signed and sealed by Land Surveyor registered in the State of Montana.
6. Fill in Cross Index & Section Diagram at bottom of sheet.

61-401815

**CERTIFIED CORNER RECORDATION**

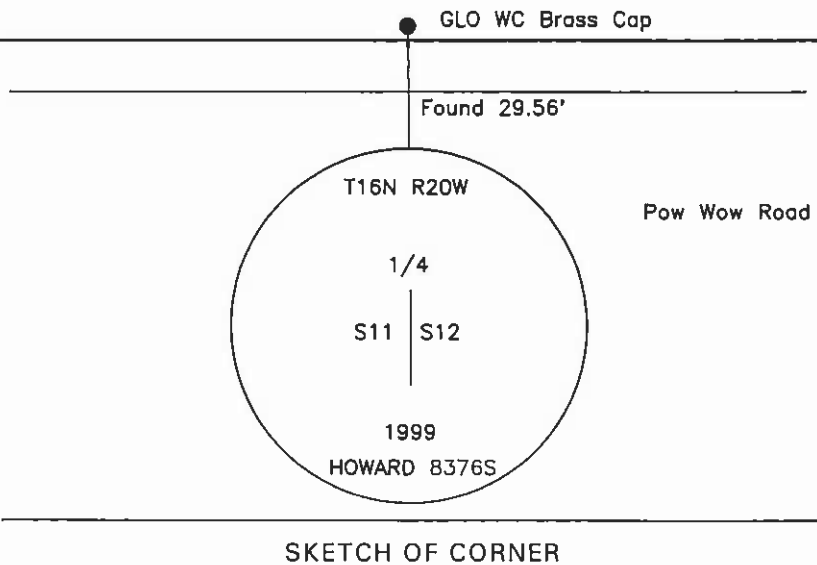
Corner: 1/4 Section Corner 11 & 12 T. 16N R. 20W P.M.M. Lake County

**ORIGINAL RECORD:** (1905 G.L.O.) Set a granite stone, 16x10x7 ins., 12 ins. in the ground marked 1/4 on W face; and raise a mound of stone, 2 ft. base, 1.5 ft. high, W. of corner.  
 (1925 G.L.O.) Found a slate stone 6x6 ins. at top 4 ins. below road surface marked with an "X" and a 1/4 on the N. face. Set an iron post for a witness cor. with a brass cap marked "1/4 S11-S12 WC 1925" and raise a mound of stone, 2 ft. base, 1.5' high, W. of cor. at 29.7' N of the stone.

**SUBSEQUENT RECORD:** See corner recordation #210166. Set a RR spike in road.

**EVIDENCE FOUND:** Found 1 1/4" YPC marked "CS&K Tribes 1826S" in 8" circular metal casing, in the center of Pow Wow Road; and also found a 2 1/2" brass cap 29.56' north of the mon. marked "1/4 S11 S12 WC 1925"

**PERPETUATION:** Replaced 1 1/4" YPC marked "CS&K Tribes 1826S" in 8" circular metal casing with 2 1/2" Aluminum Cap on a 5/8" rebar. The cap is marked as shown in the sketch. From which;  
 A fence corner post bears S40°E, 38.6' distant; with a MARLS tag.  
 A fence post bears North, 31.2' distant; with a MARLS tag.



CERTIFICATION

I, Gerald McCarthy  
 certify the information shown herein is true and correct.  
*Gerald McCarthy*  
 Signature Ground Party

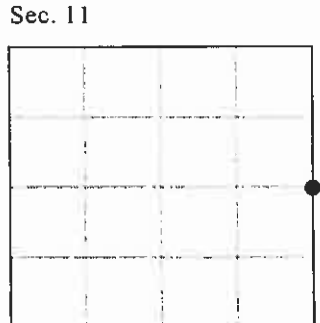
I, Glenn R. Howard  
 certify that this Corner Record correctly represents work performed by me or under my direction in compliance with the Montana Recordation Act" (70-22-101, et seq.)  
*Glenn R. Howard*  
 Signature of Surveyor & Seal

MONTANA  
 GLENN R. HOWARD  
 8376 S  
 LICENSED PROFESSIONAL LAND SURVEYOR

Date: 7-28-99 Reg. No. 8376 S

Employer: DJ&A, P.C.

Office of Clerk and Recorder, County of Lake. This "corner record" was filed for record on AUG 11 1999 10:41 AM  
 as noted on the cross index plat and is assigned page No. 401815, in Book No. 0-2241 RUTH MOORE Judy Munnis Dep  
 County Official



Cross Index No. G-21 T. 16N R. 20W PMM  
 Adopted July 1, 1981, Montana Board of Professional Engineers & Land Surveyors

N/C

•- corner this sheet