

INSTRUCTIONS

1. Original and/or subsequent used to evaluate the corner position.
2. Description of evidence found. Note discrepancies in the record, state method of establishing lost or altered corners.
3. Description of monument and accessories set to perpetuate the corner position.
4. Sketch of corner, show all pertinent data which can best be shown in a sketch example, corner marking, topography ties, position of accessories, etc.
5. Certification must be signed and sealed by Land Surveyor registered in the State of Montana.
6. Fill in Cross Index & Section Diagram at bottom of sheet.

61- 401814

**CERTIFIED CORNER RECORDATION**

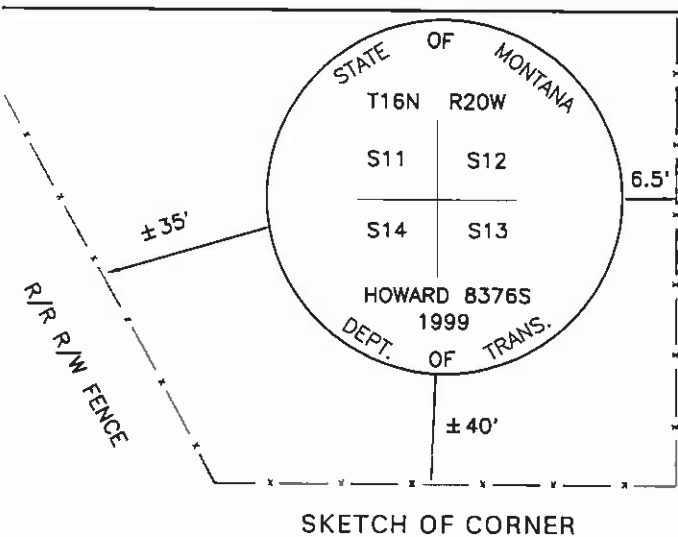
Corner: Section Corner 11, 12, 13, 14 T. 16N R. 20W P.M.M. Lake County

ORIGINAL RECORD: (1905 G.L.O.) Set a sandstone, 18x12x10 ins., 12 ins. in the ground marked with 4 notches on S. and 1 notch on E. edge; and raise a mound of stone, 2 ft. base, 1.5 ft. high, W. of corner.

SUBSEQUENT RECORD: See corner recordation #365517. No perpetuation done at that time.

EVIDENCE FOUND: Found 9x7x6 ins. stone marked with 4 notches on S. and 1 notch on E. edge.

PERPETUATION: Set a 3 1/4" MDT aluminum cap on a 30" aluminum pipe in the position of the stone, The cap is marked as shown in the sketch. From which;  
 A 24" cottonwood bears N70°W, 27.5' distant; with a MARLS tag.  
 A fence post bears S48°W, 36.4' distant; with a MARLS tag.



CERTIFICATION

I, Gerald McCarthy  
 certify the information shown herein is true and correct.

*Gerald McCarthy*  
 Signature Ground Party Chief

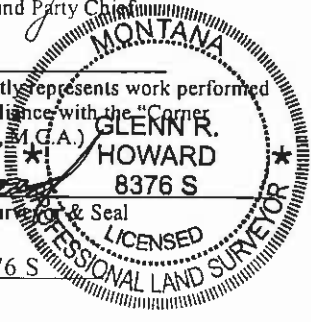
---

I, Glenn R. Howard  
 certify that this Corner Record correctly represents work performed by me or under my direction in compliance with the "Corner Recordation Act" (70-22-101, et seq., M.C.A.)

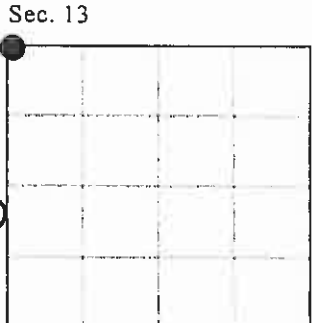
*Glenn R. Howard*  
 Signature of Surveyor & Seal

Date: 7-28-99 Reg. No. 8376 S

Employer: DJ&A, P.C.



Office of Clerk and Recorder, County of Calce. This "corner record" was filed for record on AUG 11 1999 10:40 AM was noted on the cross index plat and is assigned page No. 401814, in book No. C-2240 RUTH E. HODGES *Glenn R. Howard*  
 County Official



Cross Index No. J-21 T. 16N R. 20W PMM

NC

•- corner this sheet