

088590

# CERTIFIED CORNER RECORDATION

Corner NW SECTION 13 T. 16N R. 18E P.M.M. FERGUS County

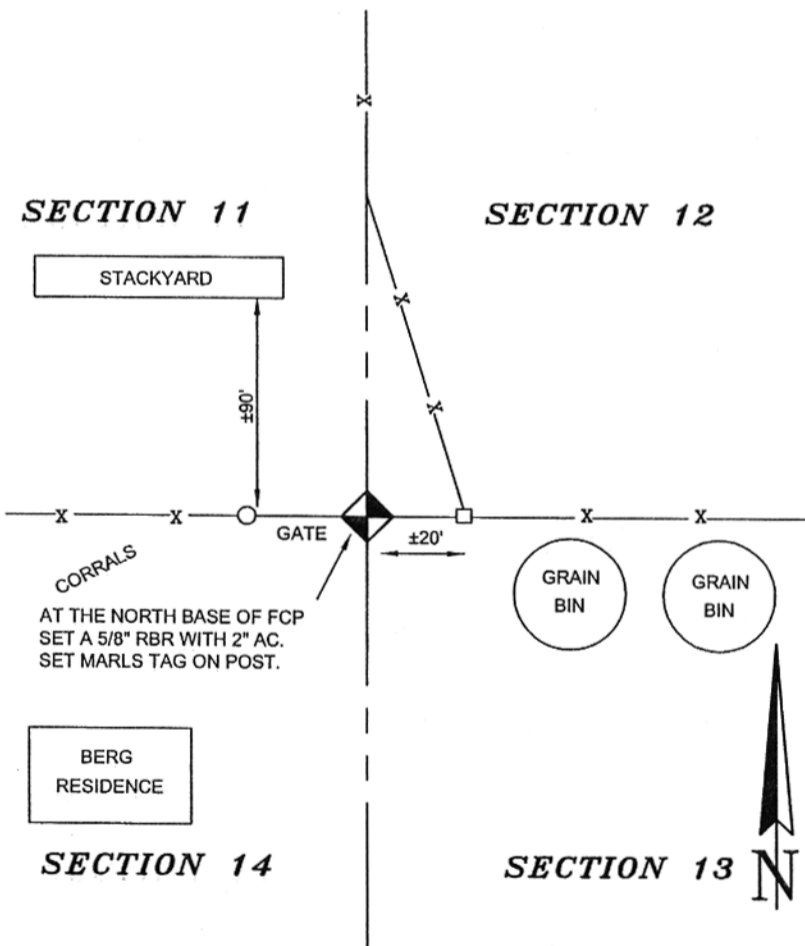
**ORIGINAL RECORD:** (Robinson, 1883) Set a sandstone 16 x 9 x 4 ins., 11 in. in the ground for Cor. to Secs. 11, 12, 13 and 14, marked 4 notches on S. and 1 on E. edges, dug pits 18, 18, 12 in. in each Sec. 5 1/2 ft. dist. and raised a mound of earth 2 ft. hgh 4 1/2 ft. base alongside.

**SUBSEQUENT RECORD:** (GLO - Cumming and Fletcher, 1912) From the cor. secs. 11, 12, 13 and 14, which is a sandstone, 9x4 ins. 5 ins. above ground, firmly set and marked and witnessed as described by the surveyor general....

**EVIDENCE FOUND:** (April, 2007) Found a stone (17" x 9" x 6") loose at the Northeast base of a 8" Ø gate post in an East-West fenceline and in line with a fence to the North. I talked with the current and longtime landowner, Tim Berg. He does not recall an original stone, but this corner has been there since his father had resided in the area.

**PERPETUATION:** (April, 2007) The 8" Ø FCP fits the record dimensions of the 1912 GLO retracement. Held the FCP and at the North base set a 5/8" rebar with 2" aluminum cap, marked as shown. Set a MARLS tag on the post.

**SEE ASSOCIATED CERTIFICATE OF SURVEY**



07-794

**CERTIFICATION**

I, \_\_\_\_\_  
certify the information shown herein is true and correct.

\_\_\_\_\_  
Signature Ground Party Chief

\_\_\_\_\_  
Scott C. Koterba

I, \_\_\_\_\_  
certify that this Corner Record correctly represents work performed by me or under my direction in compliance with the "Corner Recordation Act" (70-22-101, et seq., M.C.A.)

*Scott C. Koterba*  
Signature of Surveyor & Seal

Date: 5/25/07 Reg. No. 10801 LS

Employer: Milestone Surveying

SKETCH OF CORNER

Office of Clerk and Recorder, County of FERGUS. This "corner

**088590 Fee: \$ 0.00 Bk Pg**  
FERGUS COUNTY Filed 05/25/2007 At 04:55 PM  
Kathy Fleharty, Clk & Rcdr By Luin Manseau  
Return to: FERGUS COUNTY 712 WEST MAIN  
LEWISTOWN, MT 59457

Book - 7  
page 282, in

\_\_\_\_\_  
County Official

Cross Index No. J21 T. 16N R. 18E PMM

Sec. 13

•			

• corner this sheet

088590