

08593

CERTIFIED CORNER RECORDATION

Corner SE SECTION 27 T. 16N R. 18E P.M.M. FERGUS County

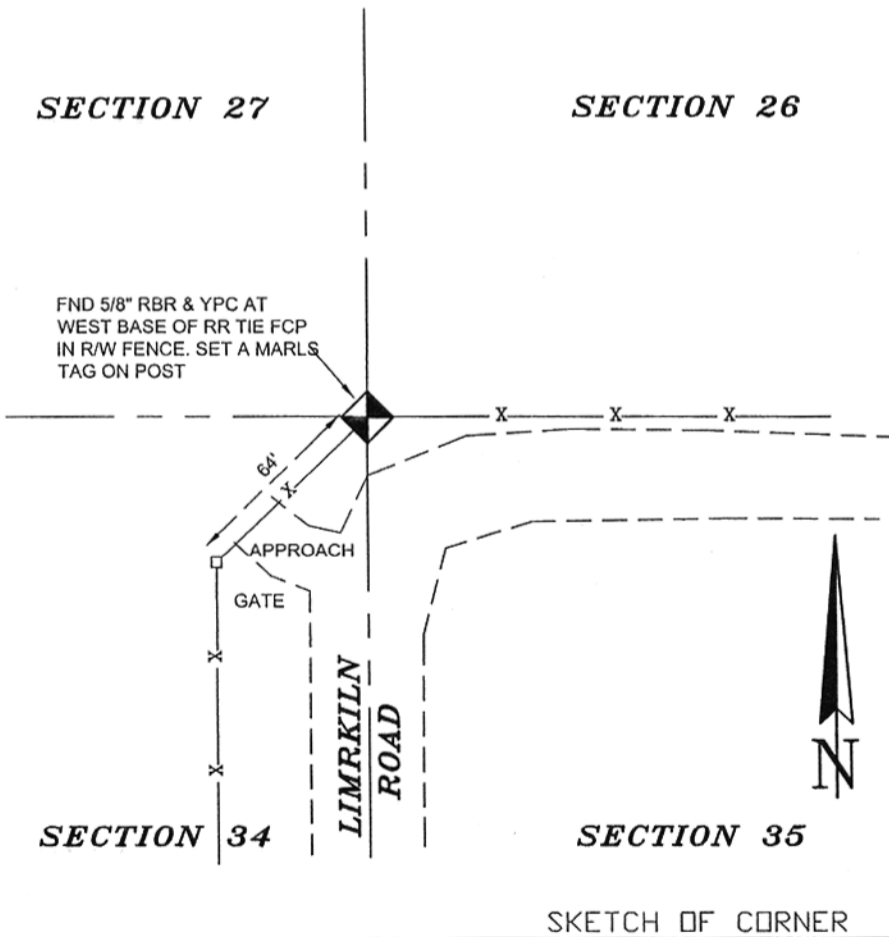
ORIGINAL RECORD: (GLO-G. Robinson, 1883) Set a sandstone 18 x 14 x 6 ins. 12 ins. in the ground for cor. to secs. 26, 27, 34 and 35, marked with 1 notch on S. and 2 notches on E. edges, dig pits 18 x 18 x 12 ins. in each section 5 1/2 ft. dist., and raised a mound of earth, 2 ft. high 4 1/2 ft. base alongside.

SUBSEQUENT RECORD: (1993 & 1995, Nash) In Spenny Subdivision and in C/S 533, Nash states that he held a found 5/8" rebar with a Fletcher plastic cap. No corner form is filed.

EVIDENCE FOUND: (August, 2005) Found a 5/8" rebar with a yellow plastic cap at West base of a RR tie FCP.

PERPETUATION: (August, 2005) Accepted the 5/8" rebar with a yellow plastic cap. Set a MARLS tag on the RR tie FCP.

SEE PLAT OF WIND HILLS SUBDIVISION



05-677

CERTIFICATION

I, _____ certify the information shown herein is true and correct.

Signature Ground Party Chief

I, Scott C. Koterba certify that this Corner Record correctly represents work performed by me or under my direction in compliance with the "Corner" Recordation Act" (70-22-101, et seq., M.C.A.)

Scott C. Koterba
Signature of Surveyor & Seal

Date: 11/6/06 Reg. No. 10801 LS

Employer: Milestone Surveying

085932 Fee: \$.00 Bk Pg

FERGUS COUNTY Filed 11/08/2006 At 03:45 PM
Kathy Fleharty, Clk & Rcdr By Limorsean
Return to: FERGUS COUNTY 712 WEST MAIN
LEWISTOWN, MT 59457

_____ This "corner

No. Pg. #144, in

County Official

Cross Index No. V-17 T. 16N R. 18E PMM

Sec. 27

• corner this sheet

Adopted July 1, 1981, Montana Board of Professional Engineers & Land Surveyors

085932

085932