

CERTIFIED CORNER RECORDATION

Corner North 1/4 Section 22 T. 16 N. R. 18 E. P.M.M. Fergus County

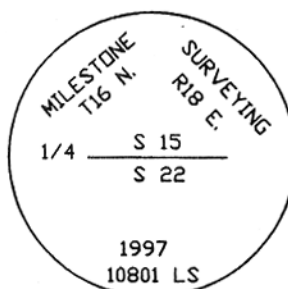
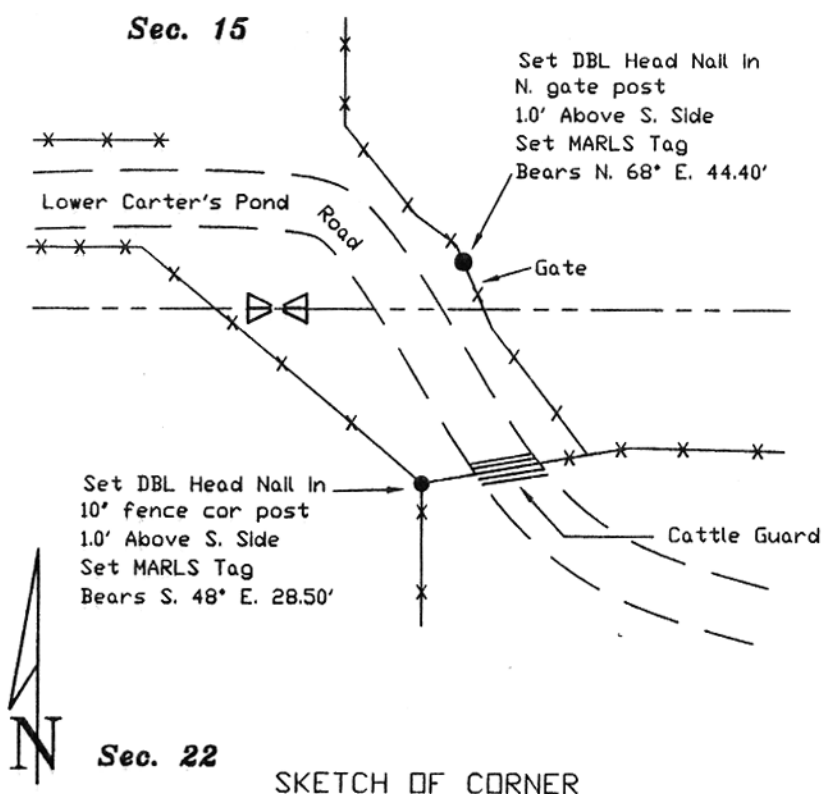
ORIGINAL RECORD: (G. Robinson 1883) Set a sandstone 14 x 10 x 9 in. 9 in. in the ground for 1/4 Section Corner and marked 1/4 on North face. Dug pits 18 x 18 x 12 in. deep E. and W. of stone 5 1/2 ft. distant and raised a mound of earth 1 1/2 ft. high and 3 1/2 ft. base alongside.

SUBSEQUENT RECORD: None.

EVIDENCE FOUND: (May 1997) None.

PERPETUATION: (May 1997) Set 5/8" rebar with 2" aluminum cap at single proportion position. Raised collar of stone and set MARLS tag on a 6" diameter gate post and another on a 10" diameter fence corner post.

SEE PLAT OF FORTIN SUBDIVISION



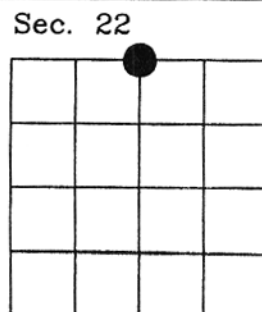
97-108

CERTIFICATION	
I, _____	
certify the information shown herein is true and correct.	
Signature Ground Party Chief	
Scott C. Koterba	
I, _____	
certify that this Corner Record correctly represents work performed by me or under my direction in compliance with the "Corner Recordation Act" (70-22-101, et seq., M.C.A.)	
Signature of Surveyor & Seal	
<i>Scott C. Koterba</i>	
Date: 11/18/97	Reg. No. 10801 LS
Employer: _____	Milestones Surveying

Office of Clerk and Recorder, County of FERGUS. This "corner record" was filed for record on NOV 24 1997 was noted on the cross-index plat and is assigned page No. 257, in book No. 4

Lally A. Fishback by M. Barrick
County Official *Dep*

Cross Index No. N15 T. 16 N. R. 18 E. P.M.M.



• corner this sheet