

INSTRUCTIONS

1. Original and/or subsequent record used to evaluate the corner position.
2. Description of evidence found, note discrepancies in the record, state method of establishing lost or obliterated corners.
3. Description of monument and accessories set to perpetuate the corner position.
4. Sketch of corner, show all pertinent data which can best be shown in a sketch example, corner marking, topography ties, position of accessories, etc.
5. Certification must be signed and sealed by Land Surveyor registered in the State of Montana.
6. Fill in Cross Index & Section Diagram at bottom of sheet.

CERTIFIED CORNER RECORDATION

Standard Corner SECTIONS 35 & 36 T. 17N R. 14W P.M.M. Missoula & Powell County

ORIGINAL RECORD: (1917 G.L.O.) Set A slate stone 14x8x5 ins., 10 ins. in the ground, for stand. cor. of secs. 35 and 36; marked S.C. on N face, with 1 groove on E. and 5 grooves on W. face, from which:

- A Balsam, 16 ins. diam., bears N0°30"E, 12 lks dist., marked SC T 17 N, R 14 W, S 36 BT.
- A Balsam, 12 ins. diam., bears N33°30"W, 52 lks dist.

SUBSEQUENT RECORD: None

EVIDENCE FOUND: Found 12x7x6 stone marked SC on north and 1 notch on east and 5 notches on the west face from which:
Dead and down BT bears N13°E, a distance of 7.92 feet, scribing visible

PERPETUATION: In place of the stone, set a 2 1/2" diameter x 30" long aluminum pipe monument with 3/4" aluminum cap marked as shown below and bury the stone alongside, from which establish the following new accessories:

- A 12" Alpine Fir bears N52°E, a distance of 31.4 feet, scribed "SC S36 BT "
- A 13" Alpine Fir bears S54°E, a distance of 13.6 feet, scribed "SC S2 BT "
- A 14" Lodge Pole bears N24°W, a distance of 24.6 feet, scribed "SC S35 BT "

Set a Steel post with Forest Service Land Survey Monument decal north of monument, 2.0 feet distant.

All BT's have BT & LSM signs, snowblazes and red painted rings.

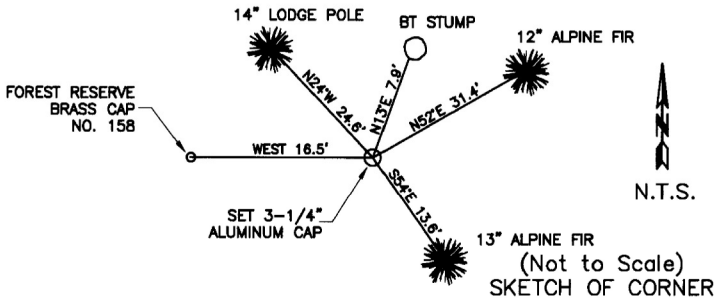
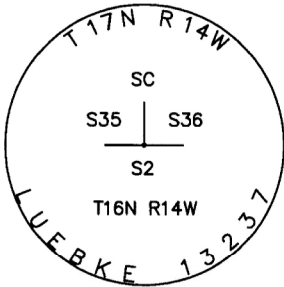
Forest Reserve brass cap #148 bears West, a distance of 16.5'

Corner lies on a 10% westerly facing slope.

Date of Survey: June 2011

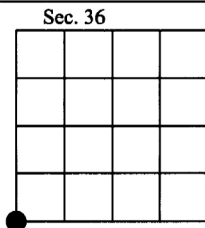
Compass declination 14°

NAD 83 coordinates for this corner:
Latitude = 47°10'45.601"N Longitude = 113°20'06.533"W
NOTE: These coordinates are to be used as a search tool only.



CERTIFICATION
I, Henry Moua
certify the information shown herein is true and correct.
Henry Moua
Signature Ground Party Chief
I, Kurt Luebke
certify that this Corner Record correctly represents work performed by me or under my direction in compliance with the "Corner Recordation Act" (70-22-101, et seq. M.C.A.)
Kurt Luebke
Signature of Surveyor & Seal
Date: January 22, 2013 Reg. No. 13237
Employer: DJ&A P.C.

169156 Fee: \$0.00 Bk Pg
POWELL COUNTY Filed 1/23/2013 At 9:25 AM
Diane S. Grey, Clk & Rcdr By *Diane S. Grey*
Return To: FILING



• - corner this sheet

Cross Index No. Z-21 T. 17N R. 14W PMM