

INSTRUCTIONS

1. Original and/or subsequent record used to evaluate the corner position.
2. Description of evidence found, note discrepancies in the record, state method of establishing lost or obliterated corners.
3. Description of monument and accessories set to perpetuate the corner position.
4. Sketch of corner, show all pertinent data which can best be shown in a sketch example, corner marking, topography ties, position of accessories, etc.
5. Certification must be signed and sealed by Land Surveyor registered in the State of Montana.
6. Fill in Cross Index & Section Diagram at bottom of sheet.

CERTIFIED CORNER RECORDATION

Section Corner SECTIONS 26, 27, 34, & 35 T. 16N R. 13W P.M.M. Powell County

ORIGINAL RECORD: (1898 GLO) Set a sandstone 18"x9"x8", 12" in the ground, marked with 1 notch on the S and 2 notches on the E edges, from which:

- A tamarac, 30" diam. bears N61°E, 95 links dist mkd. "T16N R13W S26 BT"
- A tamarac, 30" diam. bears S50°E, 5 links dist mkd. "T16N R13W S35 BT"
- A red fir, 10" diam. bears S21°W, 14 links dist mkd. "T16N R13W S34 BT"
- A spruce, 6" diam. bears N27°W, 52 links dist mkd. "T16N R13W S27 BT"

SUBSEQUENT RECORD: (2009 Kurt A. Luebke) Found a 3" aluminum cap flush with ground, marked 1828S, from which:

- A larch stump, 38 ins. diam. bears S48°E, 4 feet dist., scribed "T16N R13W"
 - A larch, 15 ins. diam. bears N70°E, 40.2 feet dist., scribed "RM"
 - A lodgepole, 11 ins. diam. bears SW, 45.7 feet dist., scribed "RM"
 - A larch, 14 ins. diam. bears, N15°W, 87.7 feet dist., scribed "RM"
- Left monument as found. Affixed Attention signs to BT's.

EVIDENCE FOUND: Found 3" aluminum cap on pipe, from which:

- A 30" stump bears N61°E, a distance of 62.7 feet, no visible scribing
- A 16" larch bears N75°E, a distance of 40.2 feet, scribed "RM"
- A 11" dead lodgepole bears S78°W, a distance of 45.8 feet, scribed "RM"
- A 10" larch bears N12°W, a distance of 87.7 feet, scribed "RM"

PERPETUATION: In place of existing monument set a 2 1/2" diameter x 30" long aluminum pipe monument with 3 1/4" aluminum cap marked as shown below and buried the original monument on north side of pipe, from which establish the following new accessories:

- A 7" larch bears S54°E, a distance of 38.7 feet, scribed "T16N R13W S35 BT"
- A 7" larch bears S54°W, a distance of 24.5 feet, scribed "T16N R13W S34 BT"

Date of Survey: September 2013

Compass declination 14°

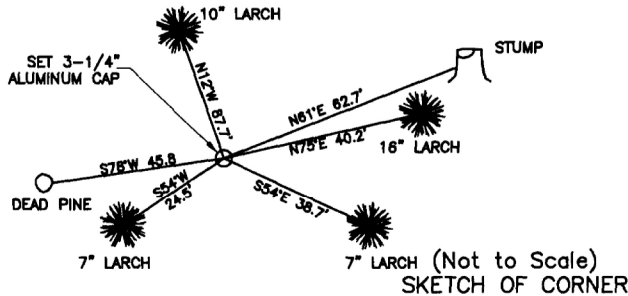
Set a Steel post with Forest Service Land Survey Monument and property boundary decal north and east of monument, 3 feet distant.

All BT's have BT & LSM signs, snowblazes and red painted rings.

Corner lies on a 2% south facing slope.



NAD 83 coordinates for this corner:
 Latitude = 47°06'24.515"N Longitude = 113°13'07.200"W
 NOTE: These coordinates are to be used as a search tool only.



CERTIFICATION

I, Henry Moua
 certify the information shown herein is true and correct.
 Signature Ground Party Chief

I, Kurt Luebke
 certify that this Corner Record correctly represents work performed by me or under my direction in compliance with the "Corner Recordation Act" (70-22-101, et seq. M.C.A.)
 Signature of Surveyor & Seal

Date: November 30, 2013 Reg. No. 13237
 Employer: DJ&A P. C.

Office of Clerk and Recorder, County of

170562 Fee: \$0.00 Bk Pg

recor POWELL COUNTY Filed 12/10/2013 At 10:45 AM
 was Diane S. Grey, Clk & Rcdr By Jarvis Bonecker in
 Return To: FILING

book

County Official

Sec. 35

●			

● - corner this sheet

Cross Index No. V-17 T. 16N R. 13W PMM

INSTRUCTIONS

1. Original and/or subsequent record used to evaluate the corner position.
2. Description of evidence found, note discrepancies in the record, state method of establishing lost or obliterated corners.
3. Description of monument and accessories set to perpetuate the corner position.
4. Sketch of corner, show all pertinent data which can best be shown in a sketch example, corner marking, topography ties, position of accessories, etc.
5. Certification must be signed and sealed by Land Surveyor registered in the State of Montana.
6. Fill in Cross Index & Section Diagram at bottom of sheet.

CERTIFIED CORNER RECORDATION

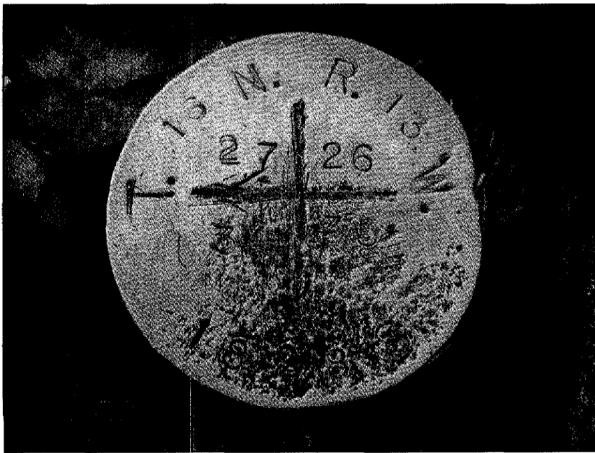
Corner Sections 26, 27, 34 & 35 T. 16 N. R. 13 W. P.M.M. Powell County

ORIGINAL RECORD: (U.S. Surveyor W. H. Thorn, July 23, 1898)
 Set a sandstone 18"x 9"x 8", 12" in the ground, marked with 1 notch on S and 2 notches on E edges, from which;
 A tamarac, 30" diam, bears N61°E, 95 links (62.7') marked "T16N. R13W. S. 26 B.T."
 A tamarac, 30" diam, bears S50°E., 5 links (3.3') marked "T16N. R13W. S. 35 B.T."
 A red fir, 10" diam, bears S21°W 14 links (9.2') marked "T16N. T13W. S. 34 B.T."
 A spruce, 6" diam bears N27°W. 52 links (34.3') marked "T16n. R13W. S. 27 B.T."

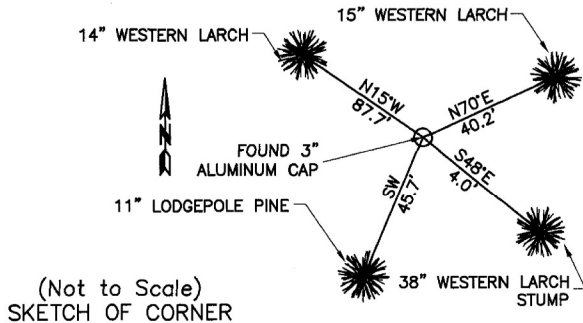
SUBSEQUENT RECORD: None

EVIDENCE FOUND: Found a 3" aluminum cap flush with ground, marked as shown below, from which;
 A 38" W Larch stump bears S48°E, 4 feet. Scribed "T16N R13W"
 A 15" W Larch bears N70°E, 40.2 feet. Scribed "RM"
 An 11" Lodgepole Pine bears SW, 45.7 feet. Scribed "RM"
 A 14" W Larch bears N15°W, 87.7 feet. Scribed "RM"

PERPETUATION: Left monument as found. Affixed Attention signs to BT's.
 Corner is on a south facing 5% slope, approximately 250' west of logging road.
 Date of Survey: October, 2009.
 Magnetic Declination = 14.15°

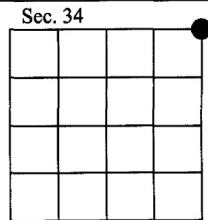


NAD 83 coordinates for this corner:
 Latitude = 47°06'24.2"N Longitude = 113°13'06.8"W
 NOTE: These coordinates are to be used as a search tool only.



CERTIFICATION
 I, Gary Little
 certify the information shown herein is true and correct.
 Signature Ground Party Chief
 I, Kurt A. Luebke
 certify that this Corner Record correctly represents work performed by me or under my direction in compliance with the "Corner Recordation Act" (70-22-101, et seq., M.C.A.)
 Signature of Surveyor & Seal
 Date: 1-5-2010 Reg. No. 13237 S
 Employer: DJ&A P. C.

164553 Fee: \$0.00 Bk Pg
 POWELL COUNTY Recorded 1/5/2010 At 10:00 AM
 Diane S. Grey, Clk & Rcdr By Janta Beckels
 Return To: FILING



• - corner this sheet

Cross Index No. V-17 T. 16 N. R. 13 W. PMM