

INSTRUCTIONS

1. Original and/or subsequent record used to evaluate the corner position.
2. Description of evidence found, note discrepancies in the record, state method of establishing lost or obliterated corners.
3. Description of monument and accessories set to perpetuate the corner position.
4. Sketch of corner, show all pertinent data which can best be shown in a sketch example, corner marking, topography ties, position of accessories, etc.
5. Certification must be signed and sealed by Land Surveyor registered in the State of Montana.
6. Fill in Cross Index & Section Diagram at bottom of sheet.

CERTIFIED CORNER RECORDATION

1/4 Corner Sections 27 & 34 T. 16 N. R. 13 W. P.M.M. Powell County

ORIGINAL RECORD: (U.S. Surveyor W. H. Thorn, July 23, 1898)
 Set a sandstone 20"x 12"x 6", 15" in the ground, marked 1/4 on N face from which;
 A tamarac, 28" diam, bears N5°W, 70 links (46.2') marked "1/4 S., B.T."
 A tamarac, 16" diam, bears S72°W, 26 links (17.1') marked "1/4 S., B.T."

SUBSEQUENT RECORD: None

EVIDENCE FOUND: Found original sandstone, 12"x 6"x 5", buried in the ground, marked "1/4" on N. face, from which;
 A stump, 20" diam, bears S72°W 17.1' No scribing visible.
 No evidence of N bearing tree.

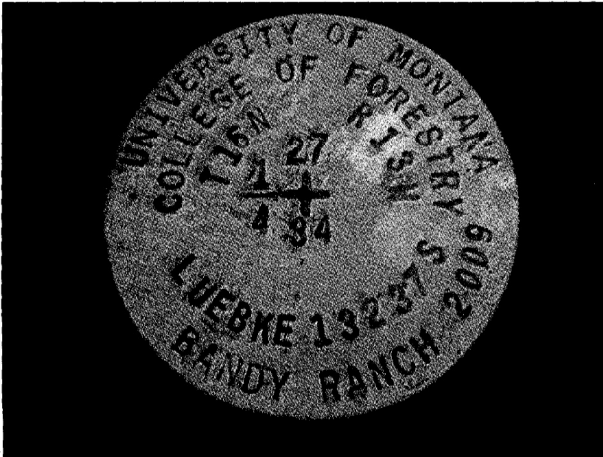
PERPETUATION: In the position of the found stone, set a 1"x 40" rebar, 36" in the ground with a 3 1/4" aluminum cap marked as shown below and buried the original stone along side. Established new bearing trees:
 An 11" Larch bears N50°E, 11.5 feet, Scribed "RM"
 A 9" Larch bears S12°E, 33.5 feet, Scribed "RM"

Affixed BT & ATTN. signs, snow blazed and painted red rings on BTs, rock ringed corner.

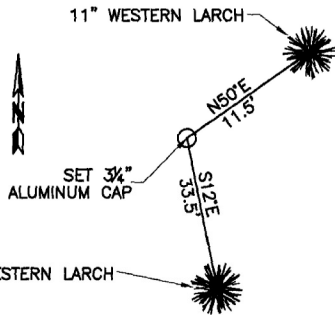
Corner is on level ground about 300 feet north of a logging road.

Date of Survey: October, 2009.

Magnetic Declination = 14.15°

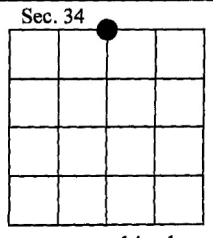


NAD 83 coordinates for this corner:
 Latitude = 47°06'24.4"N Longitude = 113°13'45.4"W
 NOTE: These coordinates are to be used as a search tool only.



(Not to Scale)
 SKETCH OF CORNER

CERTIFICATION
 I, Gary Little
 certify the information shown herein is true and correct.
Gary Little
 Signature Ground Party Chief
 I, Kurt A. Luebke
 certify that this Corner Record correctly represents work performed by me or under my direction in compliance with the "Corner Recordation Act" (70-22-101 et seq., M.C.A.)
Kurt Luebke
 Signature of Surveyor & Seal
 Date: 1-5-2010 Reg. No. 13237 S
 Employer: DJ&A P. C.



• - corner this sheet

164558 Fee: \$0.00 Bk Pg
 POWELL COUNTY Recorded 1/5/2010 At 10:25 AM
 Diane S. Grey, Clk & Rcdr By *Jane K. Checkels*
 Return To: FILING

Cross Index No. V-15 T. 16 N. R. 13 W. PMM