

# CERTIFIED CORNER RECORDATION

Corner Northwest Section 15 T. 16 N. R. 12 E. P.M.M. Judith Basin County

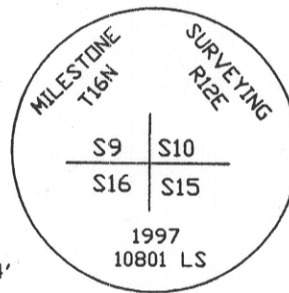
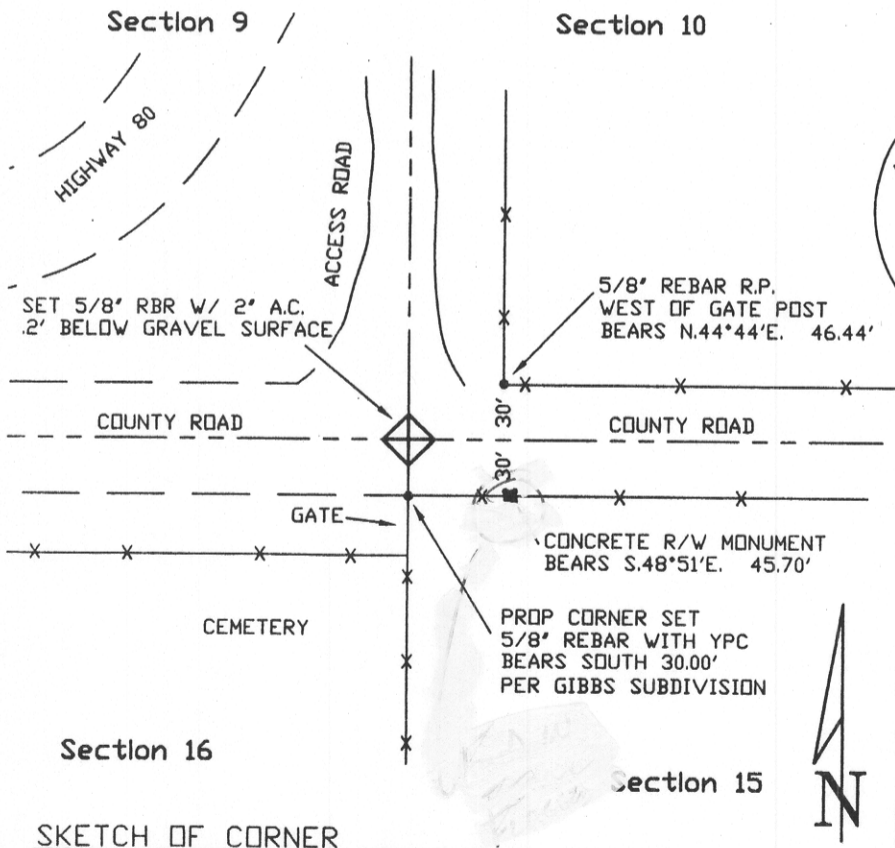
**ORIGINAL RECORD:** (Robinson, 1882) Set a sandstone 12 x 7 x 6 in. 8 ins. in the ground for corner to Sections 9, 10, 15 and 16. Marked with 4 notches on the South and 3 notches East edges. And raised a mound of stone alongside. Pits impracticable.

**SUBSEQUENT RECORD:** None.

**EVIDENCE FOUND:** (December, 1997) Nothing found due to construction of county road.

**PERPETUATION:** (December, 1997) Corner could not be determined from Highway right-of-way data. Set 5/8" rebar with 2' aluminum cap in line with fence to South and centerline of county road to East. References are shown below.

## SEE GIBBS SUBDIVISION



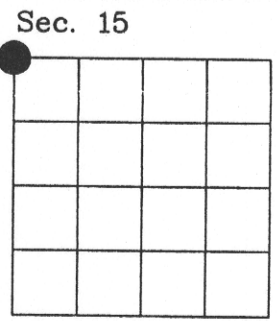
97-163

CERTIFICATION	
I, _____	
certify the information shown herein is true and correct.	
Signature Ground Party Chief	
Scott C. Koterba	
I, _____	
certify that this Corner Record correctly represents work performed by me or under my direction in compliance with the "Corner Recordation Act" (70-22-101, et seq., M.C.A.)	
Signature of Surveyor & Seal	
Date: <u>1/22/98</u> Reg. No. <u>10801 LS</u>	
Employer: <u>Milestones Surveying</u>	

SKETCH OF CORNER

Office of Clerk and Recorder, County of Judith Basin. This "corner record" was filed for record on January 23, 1998 was noted on the cross-index plat and is assigned page No. 5014, in book No. \_\_\_\_\_, in Cornie Vankuite County Official

Cross Index No. J13 T. 16 N. R. 12 E. P.M.M.



• corner this sheet