

161403

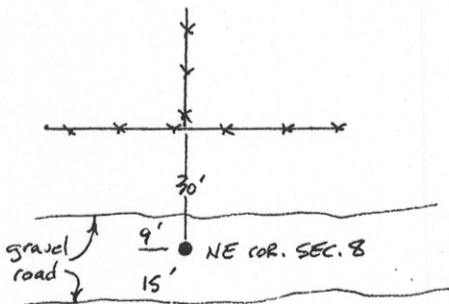
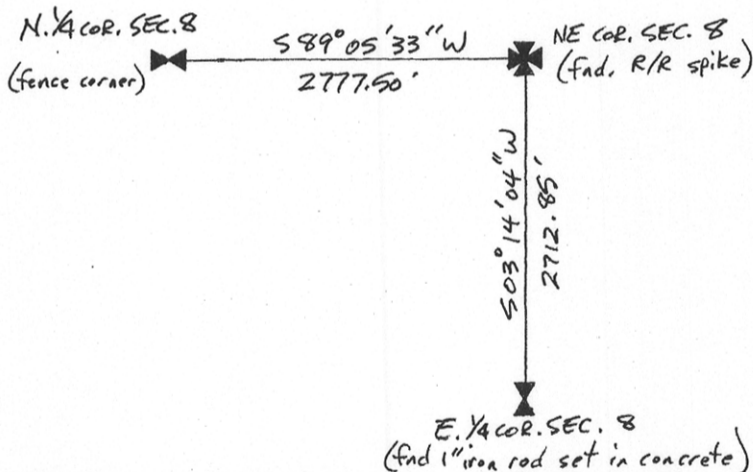
INSTRUCTIONS

1. Original and/or subsequent record used to evaluate the corner position.
2. Description of evidence found, note discrepancies in the record, state method of establishing lost or obliterated corners.
3. Description of monument and accessories set to perpetuate the corner position.
4. Sketch or corner, show all pertinent data which can best be shown in a sketch example, corner marking, topography lines, position of accessories, etc.
5. Certification must be signed and sealed by Registered Land Surveyor in State of Montana.
6. Fill in Cross Index & Section Diagram at bottom of sheet.

CERTIFIED CORNER RECORDATION

Corner NE Corner Section 8 T. 16N R. 12E P.M.M. Judith Basin County

1. Original record is unknown.
2. Found and accepted a railroad spike set 3" below the gravel surface of a east/west county road.



SKETCH OF CORNER

CERTIFICATION

I, Robert F. Stangler  
 certify the information shown herein is true and correct.  
Robert F. Stangler  
 Signature Ground Entry Clerk

I, Robert F. Stangler  
 certify that this Corner Record correctly represents work performed  
 by me or under my direction in compliance with the "Corner  
 Recordation Act" (70-22-101, et seq.) M.D.A. STANGLER  
Robert F. Stangler 094 S  
 Signature of Surveyor & Seal  
 Date: 12/2/97 Reg. No. 9094 S  
 Employer: TD&H, Inc.

Sec. 8


Office of Clerk and Recorder, County of Judith Basin, This "corner record" was filed for record on the December 15 day of 1997, was noted on the cross-index plat and is assigned page No. 5012, in book No. \_\_\_\_\_, Amanda H Kelly County Official