

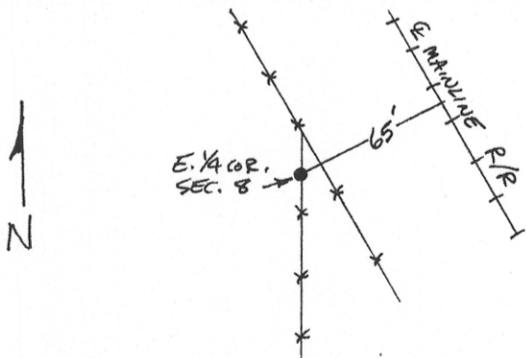
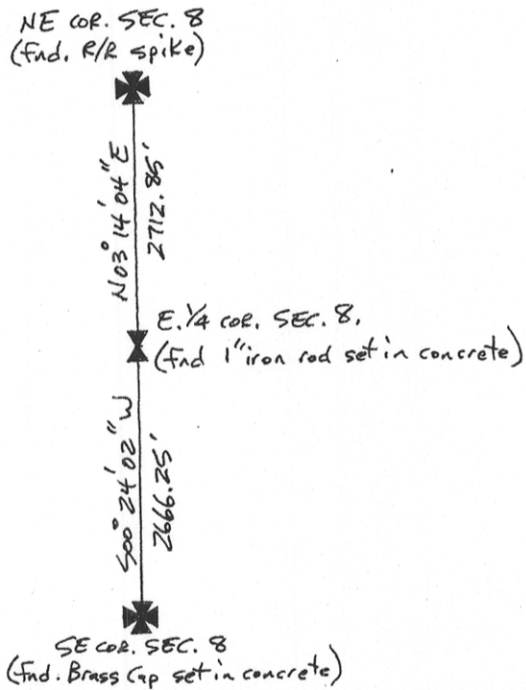
INSTRUCTIONS

1. Original and/or subsequent record used to evaluate the corner position.
2. Description of evidence found, note discrepancies in the record, state method of establishing lost or obliterated corners.
3. Description of monument and accessories set to perpetuate the corner position.
4. Sketch or corner, show all pertinent data which can best be shown in a sketch example, corner marking, topography lines, position of accessories, etc.
5. Certification must be signed and sealed by Registered Land Surveyor in State of Montana.
6. Fill in Cross Index & Section Diagram at bottom of sheet.

CERTIFIED CORNER RECORDATION

Corner East 1/4 Corner Section 8 T. 16N R. 12E P.M.M. Judith Basin County

1. Original record unknown.
2. Found and accepted a 1" iron rod set in concrete.



SKETCH OF CORNER

CERTIFICATION

I, Robert F. Stangler
 certify the information shown herein is true and correct.

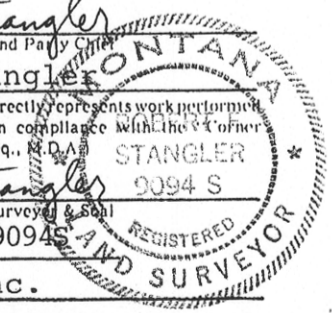
Robert F. Stangler
 Signature Ground Party

I, Robert F. Stangler
 certify that this Corner Record correctly represents work performed by me or under my direction in compliance with the "Corner Recordation Act" (70-22-101, et seq., M.C.A.)

Robert F. Stangler 9094 S
 Signature of Surveyor & Seal

Date: 12-2-97 Reg. No. 9094 S

Employer: TD&H, Inc.



Office of Clerk and Recorder, County of Judith Basin, This "corner record" was filed for record on the December 15 day of 1997 was noted on the cross-index plat and is assigned page No. 5011, in book No. _____

Demanda H. Kelly
 County Official

