

Missoula County Control Point Datasheet

Monument Description: 3-1/4" Aluminum Cap 8643S

Project Name: Ninemile Storage

Station Description: 1/4 Corner

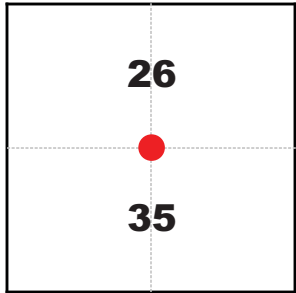
Date Visited: Oct. 17, 2008

Monument Stability: D GPS Visibility: D

Observer: SEN

Quad. Name: Huson

T. 15 N. R. 22 W.



NAD 83 (2007) Lat/Long Position

47°01'23.477"N

114°20'45.135"W

NAVD 88 Elevation: 3122.6 sft.

Notes:

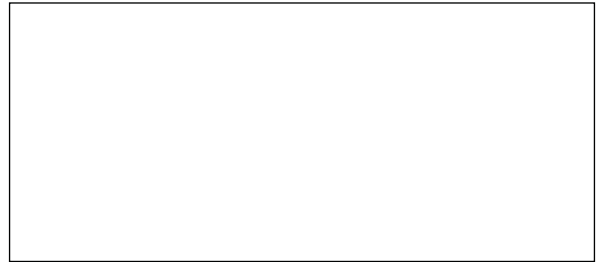


Photo of Monument



Photo Looking North



Photo Looking East

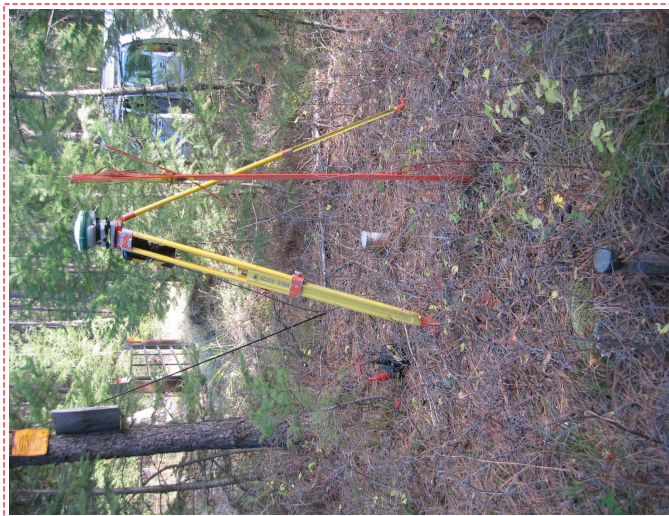
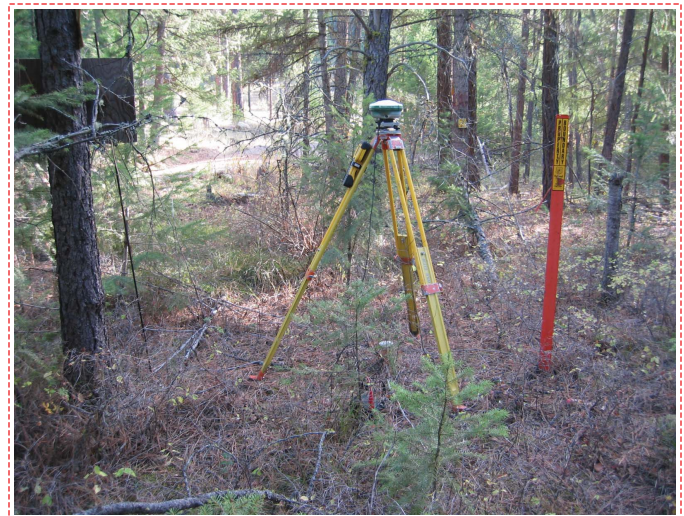
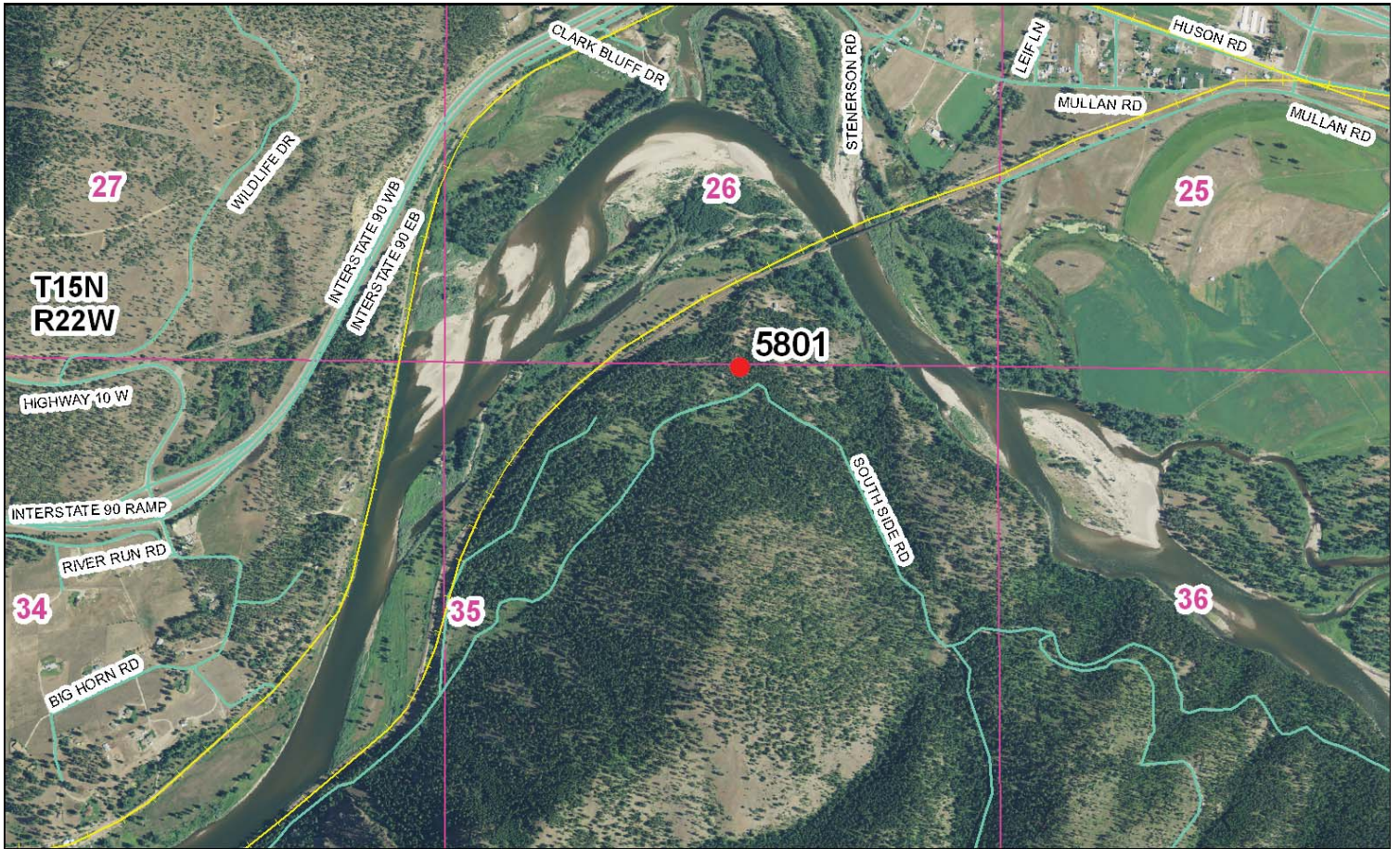


Photo Looking South



Point # 5801

To Reach: 2wd access.



Map of Area

BOOK 074 PAGE 0129

1. Original and of subsequent record used in establishing the corner position.
2. Description of evidence found, how discrepancies in the record, their method of establishing line or observed.
3. Description of monument and accessories set to perpetuate the corner position.
4. Sketch or corner, show all pertinent data which can best be shown in a sketch example, corner marking.
5. Certification must be signed and sealed by Registered Land Surveyor in State of Montana.
6. Fill in Cross Index & Section Diagram at bottom of sheet.

CERTIFIED CORNER RECORDATION

Corner $\frac{1}{4}$ 26
4 35 T. 15 N., R. 22 W., P. M.M. Missoula County

RECORD: 1882
Set a post 3 ins. square, 24 ins. in the ground for a 1/4 section corner marked 1/4 S on north face from which:
A pine, 24 ins. diameter, bears N. 45° E., 13 lks. (8.58 ft.) dist. marked 1/4 S BT.
A pine, 13 ins. diameter, bears S. 78° W., 87 lks. (57.42 ft.) dist. marked 1/4 S BT.

We establish this corner by proportionment between NE and NW corners, section 35. To perpetuate this corner we set a 30 in. pipe with a 2 1/2 brass cap and the following reference monuments:
A pipe, 12 ins. diameter, bears S. 20° E., 20.1 ft. scribed "RM".
A pine, 12 ins. diameter, bears N. 74° 39' W., 57.42 ft.
A mound of earth 2 ft. south.

FOUND:
No evidence of original corner. A 2 in. brass cap marked as shown:
The cap was found to be in the wrong position. Four corners were set in 1973 by proportional methods, one of these being the 1/4 corner between sections 26 and 27 which we found in 1987. Due to this finding the proportional position of the remaining corners have changed. See sketch on back.

MAINTENANCE:
At proportional position set a standard USDA aluminum pipe with 3 1/4 in. aluminum cap 6 ins. above ground marked as shown:



We used 2 existing RM trees and established 1 new bearing tree described as follows:
A p. pine snag, 13 ins. diameter, bears S. 23° E., 25.9 ft. dist. scribed RM.
A p. pine snag, 15 ins. diameter, bears N. 74° W., 38.15 ft. dist. scribed RM.
A 6 in. BT.
A 6 in. BT.
A 1 1/4 S BT.
A 1 1/4 S BT.
A 1 1/4 S BT.
Placed BT and Land Survey Monument signs and painted blazes red.



CERTIFICATION
I, the undersigned, being a duly licensed and sworn Land Surveyor in the State of Montana, do hereby certify that the Corner hereon correctly represents a well established corner position as shown on the attached plat and in accordance with the "Corner Recordation Act", Title 82, Chapter 10, of the M.C.L.A.

Date: 2-5-88 Reg. No. 86435
Employer: D.E.F.S.

Fields Fluv
Surveyor General
James A. Flansburg
8643 S
Montana
Land Surveyor

SKETCH OF CORNER

Office of Clerk and Recorder, County of Missoula. This "corner record" was filed for record on the _____ day of 19 _____, in _____, in book No. _____ County Official _____

Cross Index No. V-19 T. 15N R. 22W P.M.

Sec. 35

• corner this sheet 314-0129

Corner Recordation Form or Other Supporting Document

Point # 5801