

Missoula County Control Point Datasheet

Monument Description: 1-1/2" Aluminum Cap 3713S

Project Name: Ninemile

Station Description: 1/4 Corner

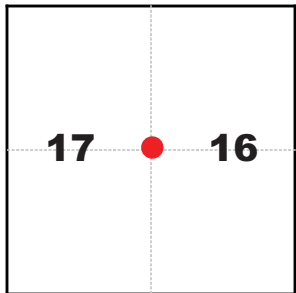
Date Visited: Sept. 9, 2010

Monument Stability: C- GPS Visibility: C

Observer: SEN - CLG

Quad. Name: Alberton

T. 15 N. R. 22 W.



NAD 83 (2007) Lat/Long Position

47°03'34.164"N

114°23'54.080"W

NAVD 88 Elevation: 3143.4 sft

Notes:

Photo of Monument



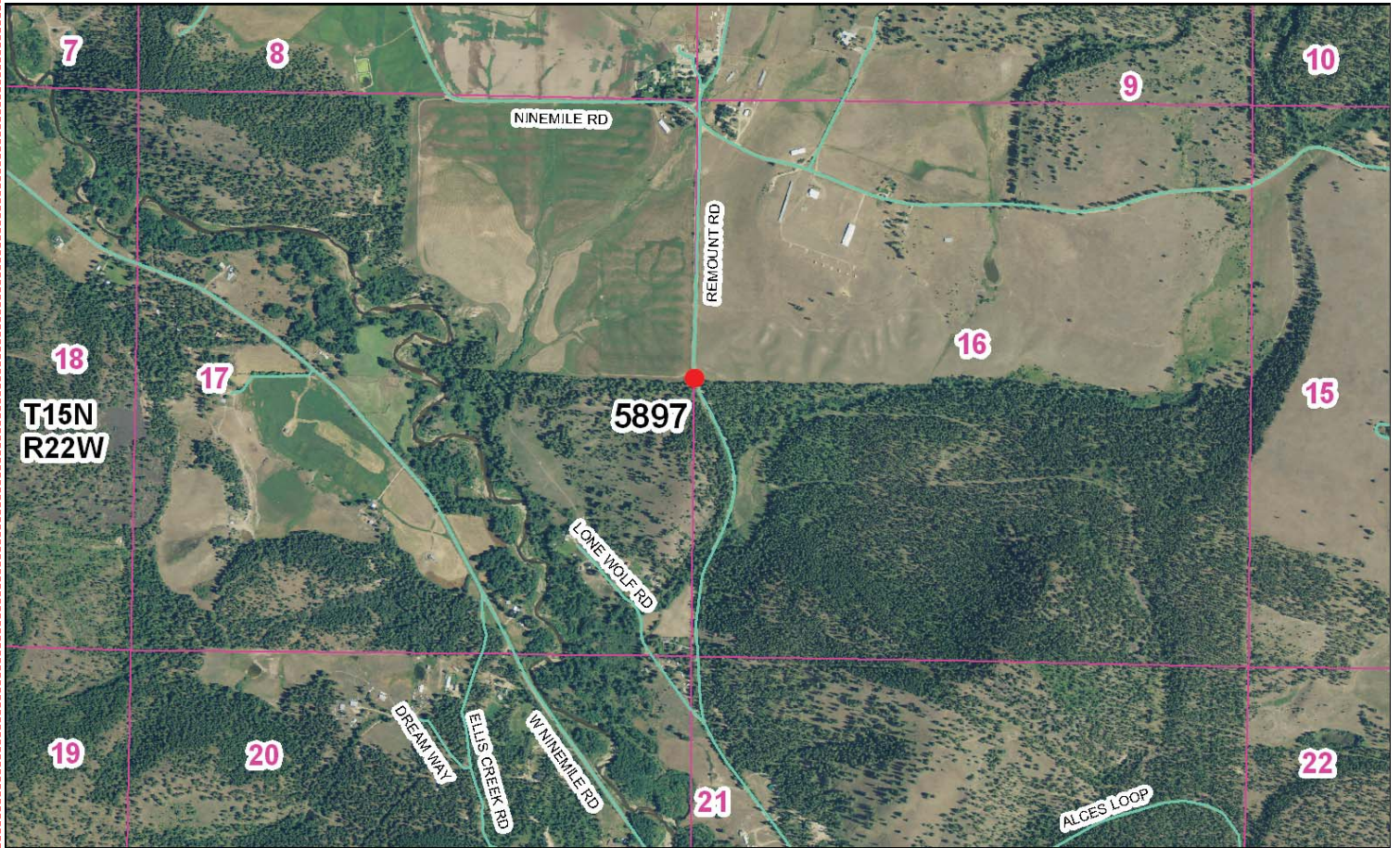
Photo Looking North



Photo Looking South



To Reach: 2wd access, monument is in the southbound lane of Remount Road.



Map of Area

CERTIFIED LAND CORNER RECORDATION

78-679

DESCRIPTION OF CORNER EVIDENCE FOUND, AND ORIGINAL RECORD (IF KNOWN)

At the 1/4 corner of Section 16 & 17, T15N R22W we find no evidence of the original corner. The Remount Road has been constructed thru this position. Board - 40.0 chains.
 Set a post 3 feet long and 3 i.d. 28" in the ground for the 1/4 corner marked 1/4 on S. line from which:
 A 39" Pin bears S 61° W 35' links
 A 30" Pin bears N 16° E 43' links

DESCRIPTION OF MONUMENT AND ACCESSORIES ESTABLISHED TO PERPETUATE THE ORIGINAL LOCATION OF THIS CORNER:

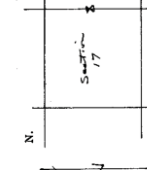
Date of work: 4-17-79
 We position this corner by single proportion method from found corners. Section Sub division attached to back of this form. 75 per cent of this corner was set a 98" x 24" Robin with 1 1/2" Al. Cap in the Remount Rd. buried 7 inches, and mark the following B.M.'s
 A 18" Pin bears S 62° E 92.0 feet.
 A 18" Pin bears S 11° W 75.6 feet.

SKETCH, WITH COURSE AND DISTANCE TO ADJACENT CORNERS IF DETERMINED IN THIS SURVEY.
 (MAY SKETCH OR PASTE REPRODUCTION ON REVERSE SIDE)



See C.O.S. # 1954 # 1262

DIAGRAM OF CORNER:



I, Stacy T. Hallock, certify that the information shown herein is true and correct.

Stacy T. Hallock
 Signature of Ground Party Chief

Surveyor's Seal



I, Elden L. Inabnit, certify that I have carefully performed or reviewed the work done on the diagrammed corner as depicted on this recordation form and approve the same.

Elden L. Inabnit
 Signature of Surveyor

∞ = Corner recorded on the sheet

3713-S
 Registration Number

458611

Office of Clerk and Recorder, County of Missoula, at 12:00 PM

This "corner record" was filed for record on the 20 day of July, 1979 was noted on the cross-index plat and is assigned page No. 50964 in book No. 12100 PM

Form 135-6227 FERN HART, Missoula County Clerk
 By Stacy T. Hallock DEPUTY
 Cross Index No. 1-2 T. 15 N. R. 22 W. Mer.