

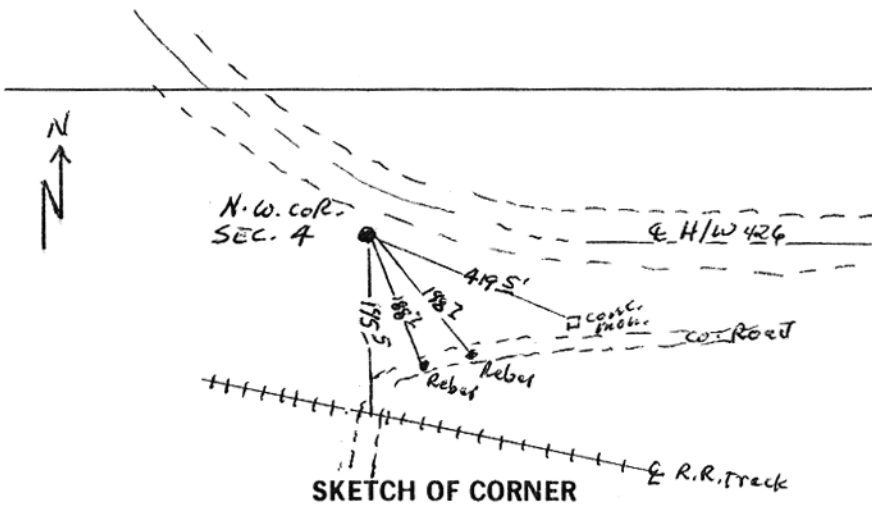
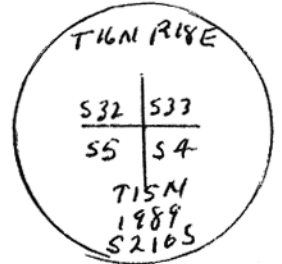
INSTRUCTIONS

1. Original and/or subsequent record used to evaluate the corner position.
2. Description of evidence found, note discrepancies in the record, state method of establishing lost or obliterated corners.
3. Description of monument and accessories set to perpetuate the corner position.
4. Sketch of corner, show all pertinent data which can best be shown in a sketch example, corner marking, topography ties, position of accessories, etc.
5. Certification must be signed and sealed by Land Surveyor registered in the State of Montana.
6. Fill in Cross Index & Section Diagram at bottom of sheet.

CERTIFIED CORNER RECORDATION

Corner N.W. SEC. 4 T. 15 N R. 18 E P.M.M. FERGUS County

1. ORIGINAL RECORD: Montana Department of Highways Project FAS S405(3) 13 highway plans and R/W map shows and I.P. in place and has ties to the corner. The Chicago, Milwaukee and Saint Paul Railroad map shows an angle and distant tie from the R.R. Tracks.
2. No evidence found of I.P. due to road construction. Re-established I.P. position from right-of-way monument ties which falls within 1 ft. of R.R. Tie.
3. At the Cor. position, I drove a 5/8 ins. dia., 30 ins. long rebar, 4 ins. above the ground and affixed a 2 1/2 ins. dia. Alum. cap marked
 Drove a 6 ft. steel post alongside Cor. with a survey monument sign attached.
 A 5/8" reb. w/pl. cap in Co. Road bears S 21°32' E., 188.7 ft.
 A 5/8" reb. w/pl. cap in Co. Road bears S 33°36' E., 198.7 ft.
 A 4" x 4" conc. R/W mon., the north side at center bears S 71°53' E., 419.5 ft.



STATE OF MONTANA
G. S. NASH
L.S. 52105
LAND SURVEYOR

I, _____ certify the information shown herein is true and correct.

Signature Ground Party Chief
Stewart Nash

I, Stewart Nash certify that this Corner Record correctly represents work performed by me or under my direction in compliance with the "Corner Recordation Act" (70-22-101, et seq., M.C.A.)

Stewart Nash
Signature of Surveyor & Seal

Date: 01-19-90 Reg. No. 52105

Employer: self

Office of Clerk and Recorder, County of FERGUS. This "corner record" was filed for record on APR 4 1990 was noted on the cross-index plat and is assigned page No. 65, in book No. 3

Stewart Nash
County Official

