

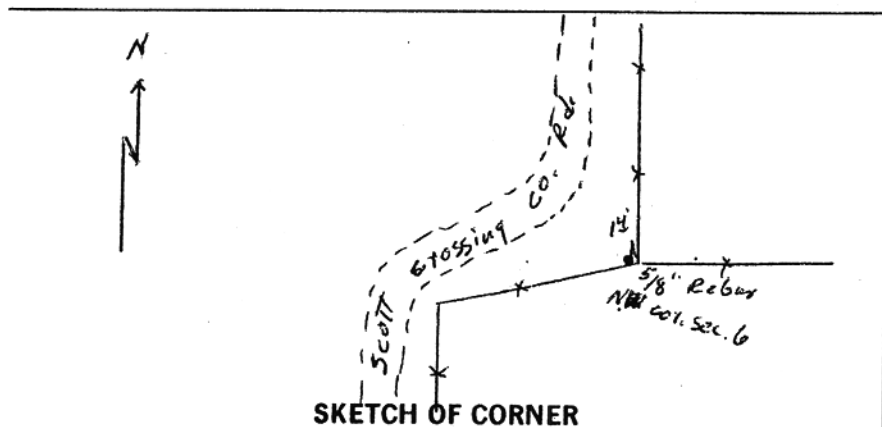
INSTRUCTIONS

1. Original and/or subsequent record used to evaluate the corner position.
2. Description of evidence found, note discrepancies in the record, state method of establishing lost or obliterated corners.
3. Description of monument and accessories set to perpetuate the corner position.
4. Sketch of corner, show all pertinent data which can best be shown in a sketch example, corner marking, topography ties, position of accessories, etc.
5. Certification must be signed and sealed by Land Surveyor registered in the State of Montana.
6. Fill in Cross Index & Section Diagram at bottom of sheet.

CERTIFIED CORNER RECORDATION

Corner N.W. Sec. 6 T. 15 N. R. 18 E. P.M.M. Fergus County

1. Original Record:(1875) Set a Limestone 14x8x7 in. 9 in. in the ground for corner to Sections Township 15 & 16 North betw. R's. 17 & 18 East, marked with 6 notches on all 4 faces. Dug pits 18x12 in. in each Township 6 ft. distant.
2. Found a 5/8" diam. rebar 4" above the ground, 1.4' west of a fence cor. post of fences N-E & SW on east R/W fence of a county road to north and to southwest. Also found an unmarked record size granite stone lying loose 0.4' west. Origin of rebar, believed to have been set by Alex Ragenovich.
3. No accessories set.



CERTIFICATION

I, _____ certify the information shown herein is true and correct.

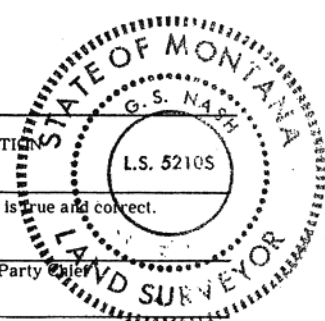
Signature Ground Party _____

I, **STEWART NASH** certify the information shown herein is true and correct. It represents work performed by me or under my direction in compliance with the "Corner Recordation Act" (70-22-101, et seq., M.C.A.)

Stewart Nash
Signature of Surveyor & Seal

Date: 4/30/92 Reg. No. 5210S

Employer: SELF



Office of Clerk and Recorder, County of FERGUS. This "corner record" was filed for record on FEB 23 1993 9am was noted on the cross-index plat and is assigned page No. 287, in book No. 3

Shelvia K. Pallett
County Official *by K. Muley*

Sec. 6, T. 15N, R. 18E.

Cross Index No. A-1 T. 15 R. 18E P.M.M.