

CERTIFIED CORNER RECORDATION

Corner 1/4 24 | 19 T. 15 N. R. 17&18 E. P.M.M. FERGUS County

Original Record: Set a limestone 20x12x8 ins 15 ins in the ground for Qt. Sec. Cor. marked "1/4" (David E. Folsom) on West face. Dug pits 18 ins sq. 12 ins deep N, S, E & W. 5 1/2ft distant. (Walter W. deLacy) 1875

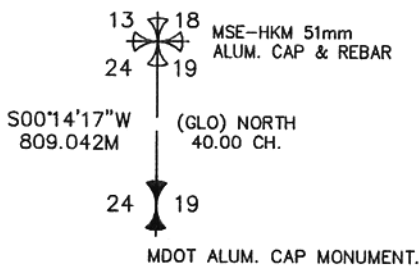
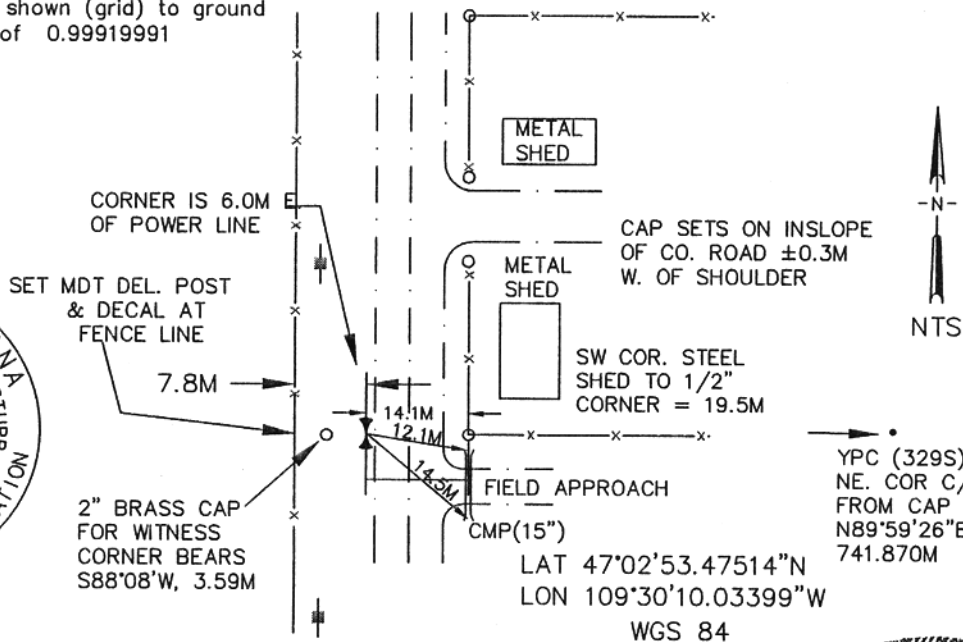
Subsequent Record: Corner Record by Joseph W. Fisher (329S) filed Jan. 13, 1983. Says he used ties from C.M. St. P. & P. railroad R/W to reestablish corner where he then set a 1/2"x18" rebar at the corner & a 2" Brass Cap 12ft west as a witness corner.

Evidence Found: Find Brass Cap Witness corner & bent 1/2' rebar per corner record by Joseph W. Fisher. We checked ties to railroad by tying \bar{C} of track at RR Sta 311+47 (at 24" RCP) and at RR Sta 272+90 (at \bar{C} of twin 42" RCP's) and calculated the position. It checks within 0.07m distance-wise & $\pm 0'02'$ angle-wise. We accept rebar as corner.

Perpetuation: We replaced 1/2" rebar with MDT Alum. Mon. stamped as shown. Set found No. 4 rebar 68cm long inside pipe. Cap sets 15cm below surface. Left Brass Cap witness corner in place.

NOTE: *Bearing and Dist. are based on State Plane Metric NAD 83-1992. To convert Dist. shown (grid) to ground divide by C.A.F. of 0.99919991

* SEE CERTIFICATE OF SURVEY FILED IN CONJUNCTION WITH THIS PROJECT.



SKETCH OF CORNER

CERTIFIED CORNER RECORDATION

MONTANA

I, Scott Bloomenrader certify the information shown herein is true and correct.

Signature of Ground Party: Chief LS

I, Scott Bloomenrader certify that this Corner Record correctly represents work performed by me or under my direction in compliance with the "Corner Recordation Act" (20-12-001 et seq., M.C.A.)

Signature of Surveyor & Seal: Scott Bloomenrader

Date: 9/24/2001 Reg. No. 9005 LS

Employer: HKM Engineering Inc Billings, MT

Office of Clerk and Recorder, County of FERGUS. This "corner record" was filed for record on SEP 26 2001

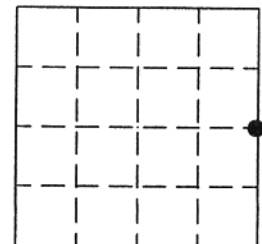
was noted on the cross-index plot and is assigned page No. 41 in book No. 6

Lathy A. Friedrich Susan M. Wenzel Dep
County Official

Cross Index No. P-25 T. 15 N. R. 17 E. PMM

Adopted July 1, 1981, Montana Board of Professional Engineers & Land Surveyors

Sec. 24-T15N-R17E



• - corner this sheet