

CERTIFIED CORNER RECORDATION

Corner Southeast Section 22 T. 15 N. R. 17 E. P.M.M. Fergus County

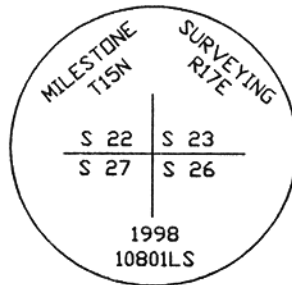
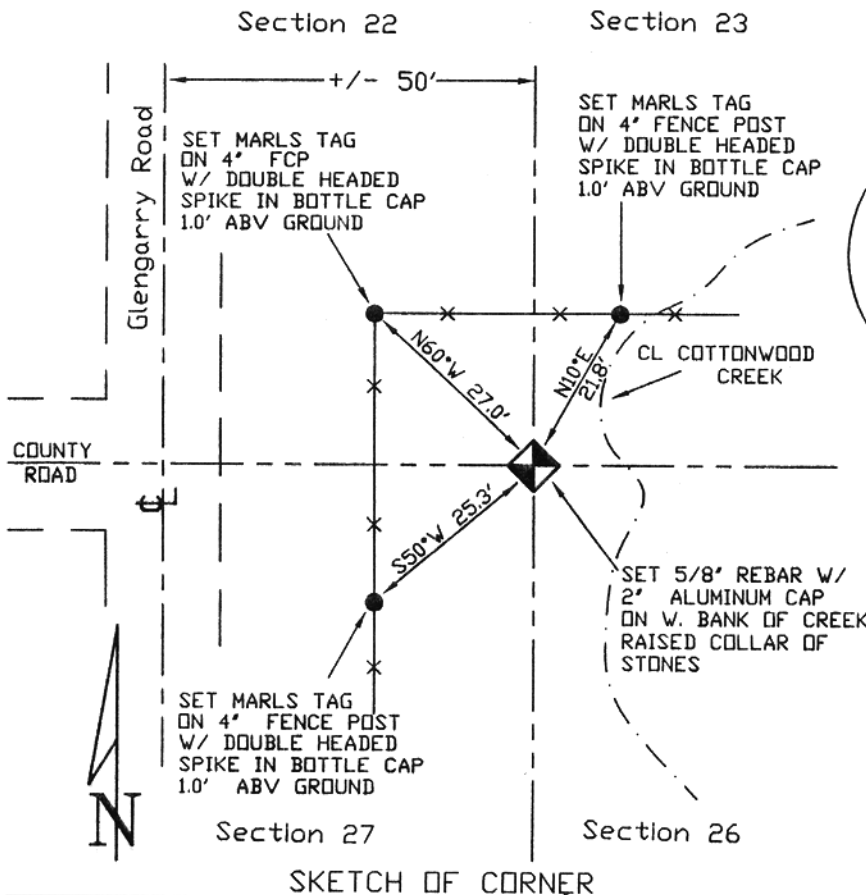
ORIGINAL RECORD: (1875 Delacy) Set a limestone 14 x 9 x 8 inches 9 inches in the ground, for the Corner of Sections 22, 23, 26 and 27 marked with 2 notches on the South and 2 notches on East edges.

SUBSEQUENT RECORD: None

EVIDENCE FOUND: (February 1998) Nothing found.

PERPETUATION: (February 1998) Set 5/8" rebar with 2" aluminum cap at a double proportioned position on the West bank of Cottonwood Creek. Set references as shown below.

SEE ASSOCIATED CERTIFICATE OF SURVEY



97-162

CERTIFICATION	
I, _____	certify the information shown herein is true and correct.
Signature Ground Party Chief	
Scott C. Koterba	
I, _____	
certify that this Corner Record correctly represents work performed by me or under my direction in compliance with the "Corner Recordation Act" (70-22-101, et seq., M.C.A.)	
Signature of Surveyor & Seal	
Date: <u>3/20/98</u>	Reg. No. <u>10801 LS</u>
Employer: <u>Milestone Surveying</u>	

Office of Clerk and Recorder, County of Fergus. This "corner record" was filed for record on 3-20-98 at 3:50pm was noted on the cross-index plat and is assigned page No. 280, in book No. 4 _____
Larry A. Liberty County Official

Sec. 22

Cross Index No. R17 T. 15 N. R. 17 E. P.M.M.

• corner this sheet