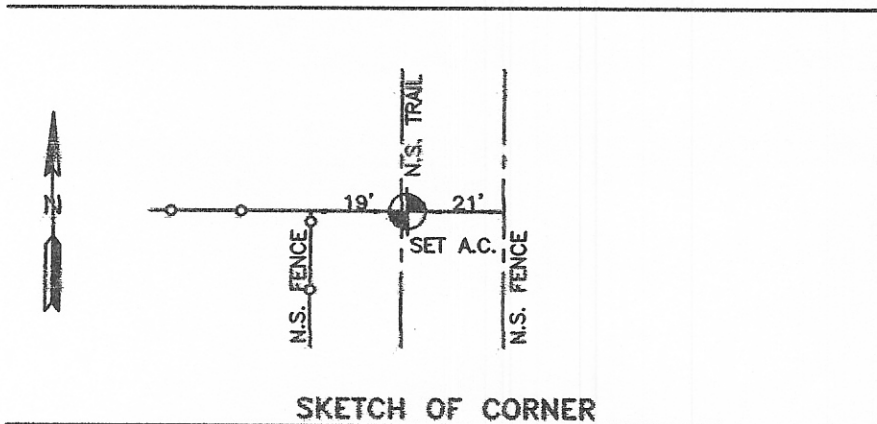
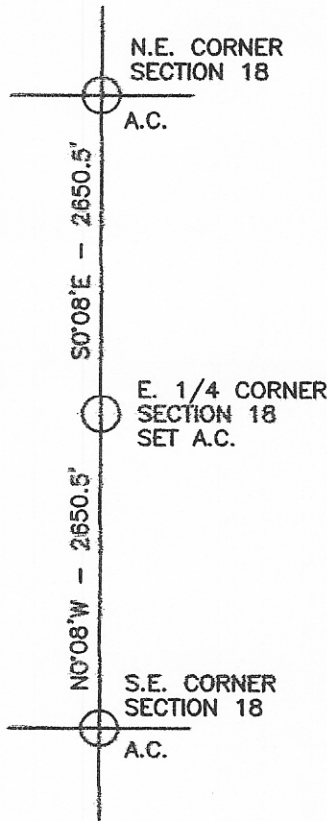
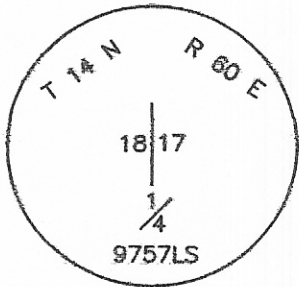


CERTIFIED CORNER RECORDATION

Corner E.1/4 COR. - SEC. 18 T. 14 N. R. 60 E. P.M.M. WIBAUX County

1. NO EVIDENCE OF ORIGINAL MONUMENT.
2. SINGLE PROPORTION AND SET 5/8" X 24" REBAR WITH 1 1/2" ALUMINUM SURVEY CAP
3. SEE SKETCH FOR TIES.



CERTIFICATION

I, _____
certify the information shown herein is true and correct.

Signature Ground Party Chief
ROBERT W. STANHOPE

I, _____
certify that this Corner Record correctly represents work performed by me or under my direction in compliance with the "Corner Recordation Act" (70-22-101, et seq., M.C.A.)

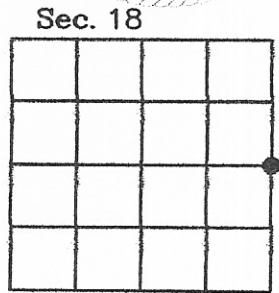
Signature of Surveyor & Seal
Robert W. Stanhope

Date: 3.16.08 Reg. No. 9757LS
Employer: STATELINE SURVEYS

ROBERT W. STANHOPE
9757LS
LICENSED LAND SURVEYOR

Office 102476 CORNER Pages: 1
STATE OF MONTANA WIBAUX COUNTY
RECORDED: 03/19/2008 9:00 KOI: CORNER
Patricia Zinda CLERK AND RECORDER
FEE: \$0.00 BY: *Patricia Zinda*

.. This "corner" _____, in _____
County Official _____



Cross Index No. L-5 T. 14 N. R. 60 E. P.M.M.

Adopted July 1, 1981, Montana Board of Professional Engineers & Land Surveyors