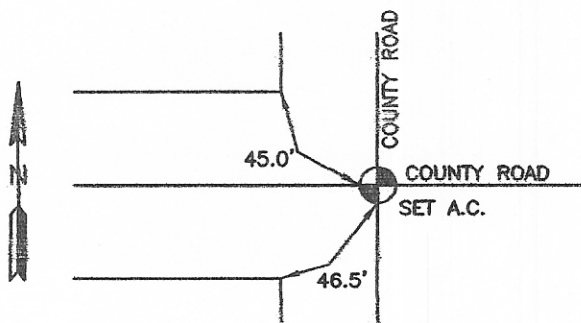
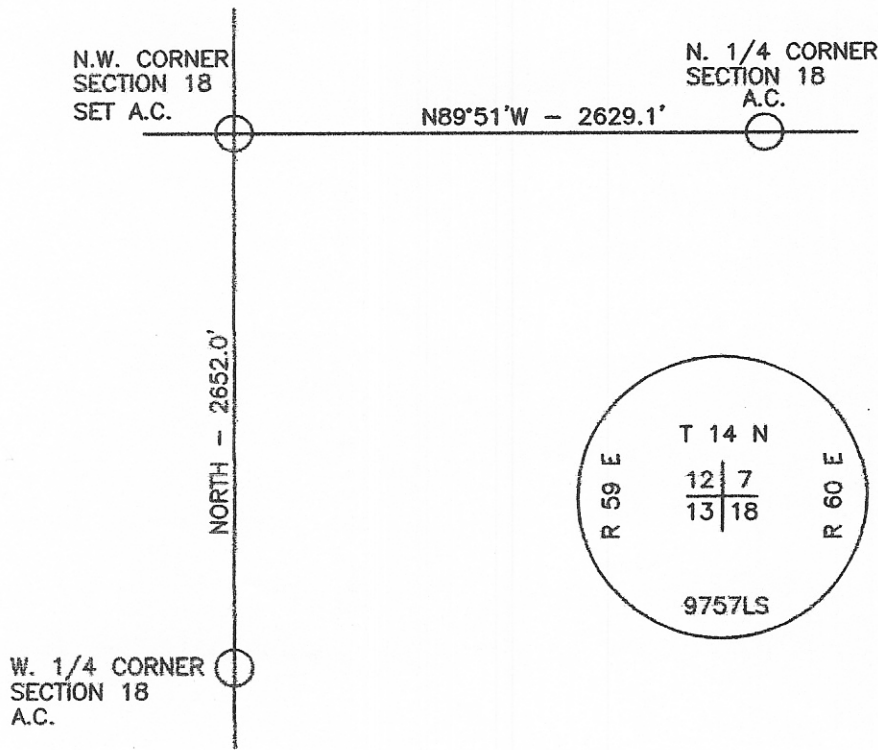


CERTIFIED CORNER RECORDATION

Corner N.W. COR. - SEC. 18 T. 14 N. R. 60 E. P.M.M. WIBAUX County

1. ORIGINAL MONUMENT DISTURBED BY ROAD CONSTRUCTION.
2. MEASURED EXISTING FEATURES, FIT WELL WITH RECORD BEARING AND DISTANCE.
3. SET 5/8" X 24" REBAR WITH 1 1/2" ALUMINUM SURVEY CAP
4. SEE SKETCH FOR TIES.



SKETCH OF CORNER

CERTIFICATION

I, _____, certify the information shown herein is true and correct.

Signature Ground Party Chief

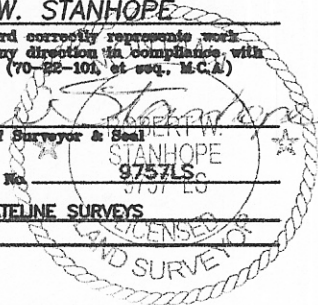
ROBERT W. STANHOPE

I, _____, certify that this Corner Record correctly represents work performed by me or under my direction in compliance with the "Corner Recordation Act" (70-22-101, et seq., M.C.A.)

Robert W. Stanhope
Signature of Surveyor & Seal

Date: 3.16.08 Reg. No. 9757LS

Employer: STATELINE SURVEYS



102469 CORNER Pages: 1
STATE OF MONTANA WIBAUX COUNTY
RECORDED: 03/19/2008 9:00 KOI: CORNER
Patricia Zinda CLERK AND RECORDER
FEE: \$0.00 BY: *Patricia Zinda*
TO: FILED NO, RETURN, .

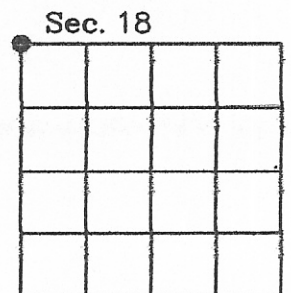
_____ . This "corner

No. _____, in

County Official

Cross Index No. J-1 T. 14 N. R. 60 E. P.M.M.

Adopted July 1, 1981, Montana Board of Professional Engineers & Land Surveyors



• corner this sheet

#2