

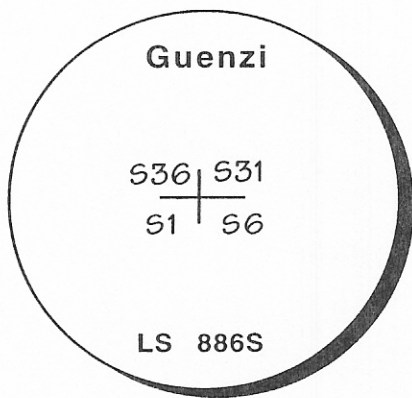
CERTIFIED CORNER RECORDATION

Corner NW Corner Section 6 T. 14N R. 59E PMM Wibaux County

Original Record: Set Flintstone 24" X 8" X 5" with pits.

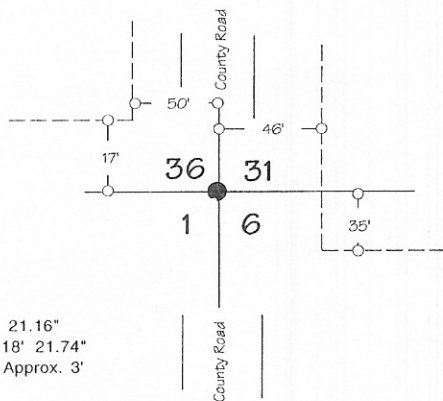
Found: Corner falls in a North-South county road. No evidence of original corner found.

Set: Aluminum cap as shown below at the proportionate position approx 4" below surface of road.



2" Aluminum cap on 1/2" X 24" rebar

Note! Dashed lines indicate fences:



Latitude= 47° 00' 21.16"
Longitude= 104° 18' 21.74"
Determined within Approx. 3'

SKETCH OF CORNER

CERTIFICATION

I, Richard E. Guenzi
certify the information shown herein is true
and correct.

Richard E. Guenzi
Signature of Ground Party Chief

I, Richard E. Guenzi
certify that this Corner Record
correctly represents work performed
by me or under my direction in
compliance with the "Corner Recordation
Act" (70-22-101, et seq., M.C.A.)

Richard E. Guenzi
Signature of Surveyor & Seal

Date: 9-30-99 Reg. No. 0065

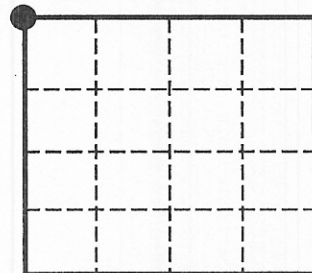
Employer: Guenzi Surveys

Document Number: 99072
Office of Clerk and Recorder, County of Wibaux. This "corner record"
was filed for record on November 24, 1999
was noted on the cross-index plat and is assigned page No. 21, in
book No. 2 *Marlene Blome*
Clerk and Recorder

Fee: None By: _____
Deputy

Cross Index No. A1 T. 14N R. 59E PMM

Sec. 6



● Corner this sheet

99-131