

Missoula County Control Point Datasheet

Monument Description: 3-1/4" Aluminum Cap 5927S

Project Name: ALL

Station Description: Quarter Corner

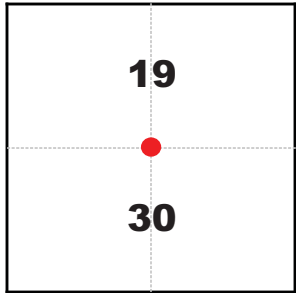
Date Visited: July 12, 2010

Monument Stability: C GPS Visibility: A

Observer: SEN

Quad. Name: Primrose

T. 14 N. R. 20 W.



NAD 83 (2007) Lat/Long Position

46°57'01.623"N

114°10'38.242"W

NAVD 88 Elevation: 3095.5 sft.

Notes:

Photo of Monument



Photo Looking East

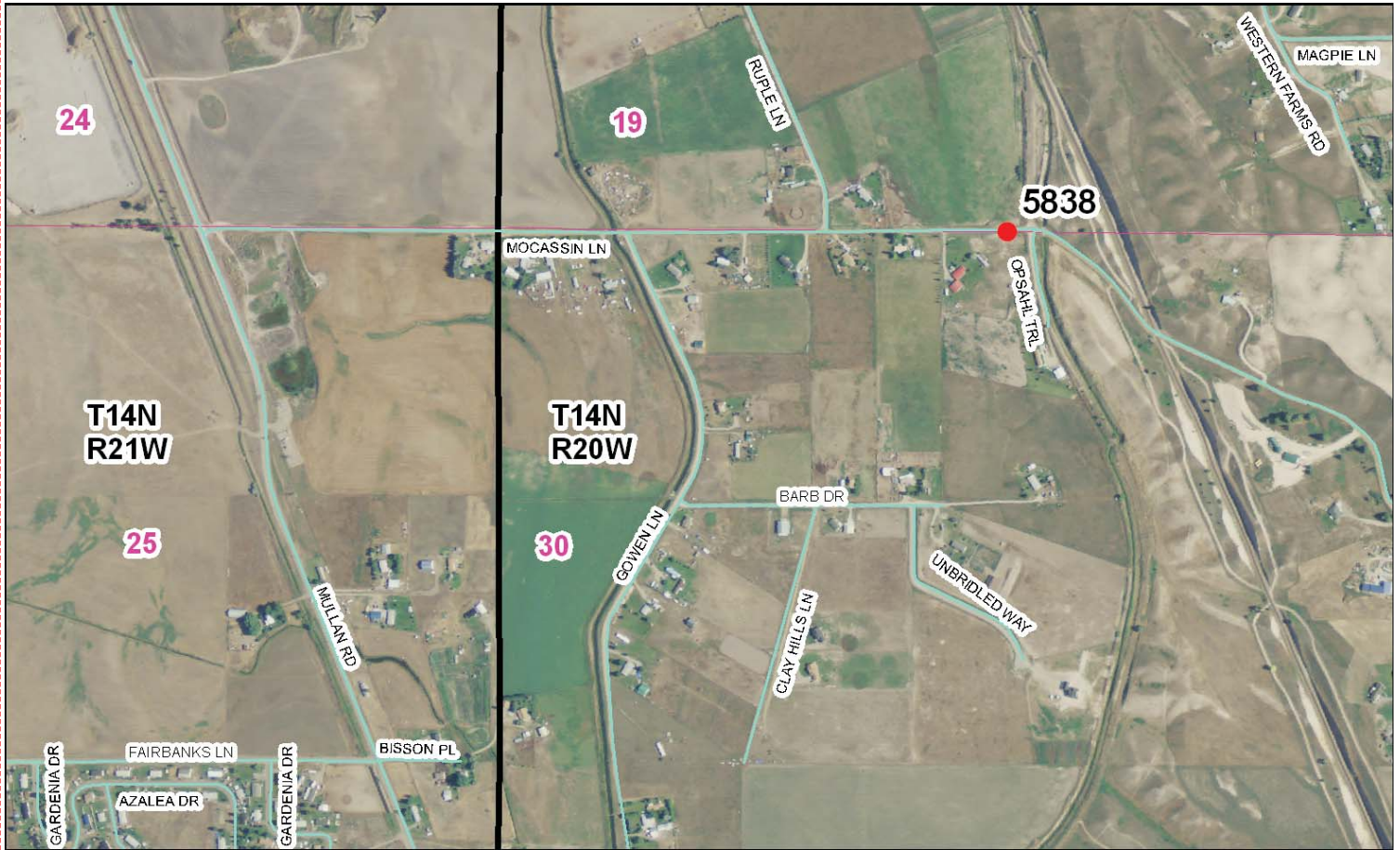


Photo Looking West



Point # 5838

To Reach: 2wd access.



Map of Area

40456" 1786

- INSTRUCTIONS**
1. Original and/or a recent record used to evaluate the corner position.
 2. The monument should be set in the center of the corner, or in the center of the line of establishment lost or obliterated corners.
 3. Description of monument and accessories set to penetrate the corner section.
 4. Sketch of corner, show all pertinent data which can best be shown in a sketch example, corner marking, accessories, etc.
 5. Certification must be signed and sealed by Land Surveyor registered in the State of Montana.
 6. Fill in Cross Index & Section Diagram at bottom of sheet.

CERTIFIED CORNER RECORDATION

1/4 SEC. CORNER SECTIONS 19 & 30 T. 14 N. R. 20 W., P.M.M., MISSOULA COUNTY, MONTANA

RECORD #1: (September 28, 1870) G.L.O. survey by William H. Baker. "Set 1/4 sec. cor. a post in mound of earth, with pits, chained stake etc. as per instructions."

RECORD #2: (September 14, 1978) Corner recordation form #431361. "Set a 2" x 30" iron pipe 24" in the ground with a 2-1/2" brass cap."

FOUND: (March 25, 1996) A 2-1/2" brass cap "Schurian 3102S". Referenced monument prior to road construction.

FOUND: (October 19, 1998) Monument destroyed by construction.

SET: (October 19, 1998) From previously established references, set a 1" x 30" aluminum shaft with a 3-1/4" aluminum cap, marked as shown. Placed a metal fence post with yellow tag 1 foot north of monument.

ACCESSORIES: A set 5/8" x 24" rebar with a 2-1/2" aluminum cap, marked as shown, bears N 06° W, 38.45 feet.
 A found 1-1/2" aluminum cap "Custer 3325S" bears N 89° 38' 35" E, 280.67 feet.
 A found 1-1/2" aluminum cap "Custer 3325S" bears N 87° 54' 51" W, 869.80 feet.

199830853

CERTIFICATION

I, Steve E. Niday, certify the information herein is true and correct.

Steve E. Niday
 Signature of Surveyor & Seal

I, Horace S. Brown, Jr., certify that this Corner Recordation Form was prepared in accordance with the "Corner Recordation Form" (MCA) and the "Corner Recordation Form" (MCA).

Horace S. Brown, Jr.
 Signature of Surveyor & Seal

Date: 11/19/98 Reg. No. 59275
 Employer: Missoula County Surveyor's Office

SECTIONS

19	•	30
----	---	----

• Corner this form

Office of Clerk and Recorder, County of Missoula, State of Montana. This "corner record" was filed for record on Nov 19 1998 was noted on the cross-index plat and is assigned book No. 503 Micro page No. 1786

WYNELLY ZEREN, Missoula County Clerk @ 10:34 AM
 By: SCARY DORR County Official

Cross Index No. R-3 T. 14 N. R. 20 W. P.M.M.

CR 0