

CERTIFIED CORNER RECORDATION

Corner S 1/4 SECTION 36 15N 19E
N 1/4 SECTION 1 T. 14N R. 19E P.M.M. FERGUS County

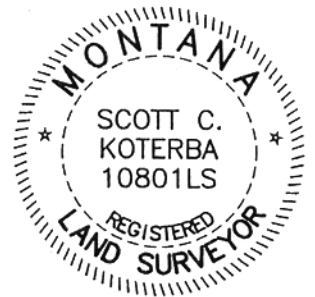
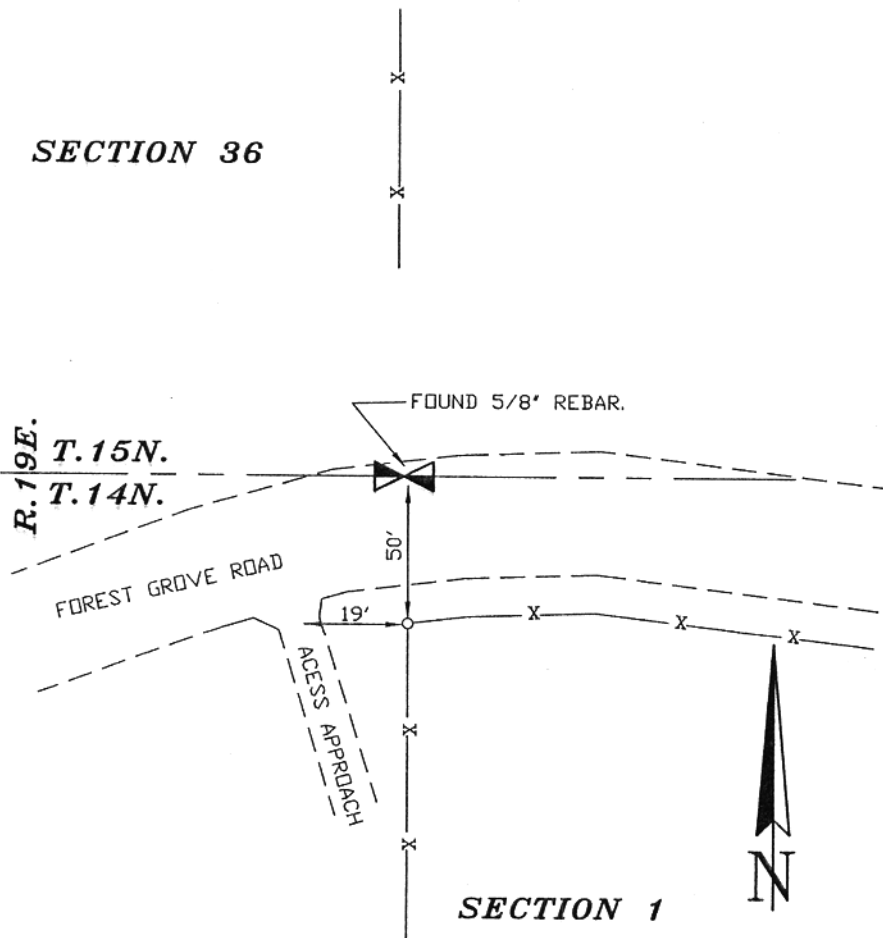
ORIGINAL RECORD: (1886, Stafford) Set a Sandstone 30 x 24 x 3 ins. 22 ins. in the ground for the 1/4 Sec. Cor. marked 1/4 on the N. face and raised a mound of stone covered with earth alongside.

SUBSEQUENT RECORD: C/S 14, Spring Creek Tracts and others show "set iron pin."

EVIDENCE FOUND: (August, 2004) No original evidence found. Found a 5/8" rebar per C/S 14 and Spring Creek Tracts. This position does not fit the single proportion position by over 40'. No evidence was shown on any surveys. Since this has been the accepted corner for some time and subsequent surveys have held same, I hold this corner even though its position is questionable.

PERPETUATION: (August, 2004) Accepted the corner as found.

SEE PETERSCHICK SUBDIVISION NO.2



04-602

CERTIFICATION

I, _____
certify the information shown herein is true and correct.

Signature Ground Party Chief _____

I, Scott C. Koterba
certify that this Corner Record correctly represents work performed by me or under my direction in compliance with the "Corner Recordation Act" (70-22-101, et seq., M.C.A.)

Scott C. Koterba
Signature of Surveyor & Seal

Date: 1/13/05 Reg. No. 10801 LS

Employer: Milestone Surveying

SKETCH OF CORNER

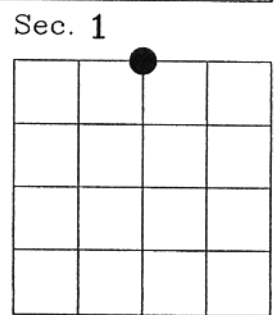
(**077886 Fee: \$.00 Bk Pg**
FERGUS COUNTY Filed 01/13/2005 At 12:30 PM
 by Kathy Fleharty, Clk & Rodr By Kim Manseau
 Return to: **FERGUS COUNTY 712 WEST MAIN**
LEWISTOWN, MT 59457

book No. 6

This "corner" _____

353 in

County Official _____
 Cross Index No. Z-23 15N 19E
A-23 T. 14N R. 19E PMM



• corner this sheet