

CERTIFIED CORNER RECORDATION

Corner: South 1/4 Section 20 T. 14 N. R. 18 E. P.M.M. Fergus County

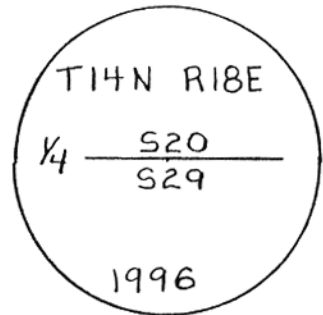
Original Record: (1886) Set a sandstone 16" x 12" x 4", 10" in the ground for 1/4 sec. cor. marked " 1/4 " on W. face and raised a mound of stone alongside.

Subsequent Record: none

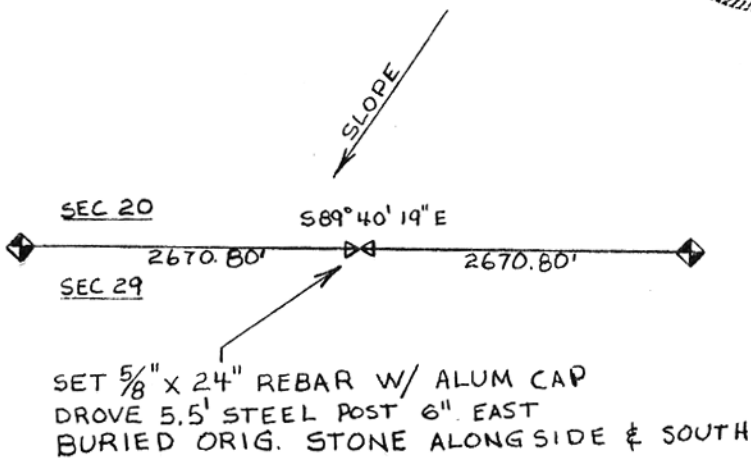
Evidence found: (6/18/96) Found the original marked stone lying on the ground. Apparently disturbed by farming, ± 50' FROM TRUE CORNER POSITION.

Perpetuation: ^{AT SINGLE PROPORTIONED POSITION} Set a 5/8" x 24" rebar with a 2" aluminum cap marked as shown, and buried the stone alongside.

See McCollum Subdivision



96-20



CERTIFICATION	
I, _____ certify the information shown is true and correct.	
_____ Signature Ground Party Chief	
I, <u>Scott C. Koterba</u> certify that this Corner Record correctly represents work performed by me or under my direction in compliance with the "Corner Recordation Act" (70-22-101, et seq., M.C.A.)	
<u>Scott C. Koterba</u> Signature of Surveyor & Seal	
Date: <u>7/12/96</u>	Reg. No. <u>10801 LS</u>
Employer: <u>Milestone Surveying, Inc.</u>	

Office of Clerk and Recorder, County of FERGUS. This "corner record" was filed for record on JUL 12 1996

was noted on the cross-index plat and is assigned page No. 1165, in book No. 4.
Kathy A. Schubert
County Official

Cross Index No. R7 T. 14N R. 18E P.M.M.

Adopted July 1, 1981, Montana Board of Professional Engineers and Land Surveyors

Sec. 20

38619