

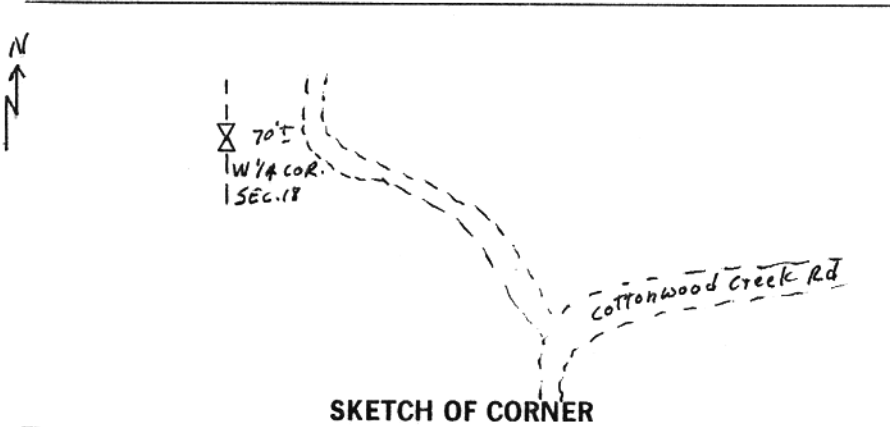
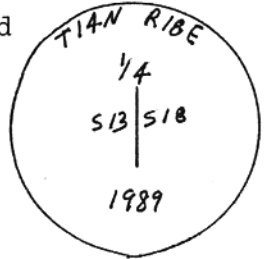
INSTRUCTIONS

1. Original and/or subsequent record used to evaluate the corner position.
2. Description of evidence found, note discrepancies in the record, state method of establishing lost or obliterated corners.
3. Description of monument and accessories set to perpetuate the corner position.
4. Sketch of corner, show all pertinent data which can best be shown in a sketch example, corner marking, topography ties, position of accessories, etc.
5. Certification must be signed and sealed by Land Surveyor registered in the State of Montana.
6. Fill in Cross Index & Section Diagram at bottom of sheet.

CERTIFIED CORNER RECORDATION

Corner W 1/4 SEC. 18 T. 14 N R. 18 E P.M.M. FERGUS County

1. ORIGINAL RECORD: Set a limestone 16 x 8 x 6 ins., 13 ins. in the ground for Qtr. Sec. Corner, marked 1/4 on west face. Dug pits in each Sec.
2. No evidence found of original stone or pits. Found a 1 1/4" dia. pipe 18" above ground, bent to the South. Pipe was reported by land owners Foy McCollum and George Apple Jr. to have been set by Frank Hoagland in the mid 1930's.
3. Accepted the pipe as the nearest and best evidence and drove a 5/8" x 30" rebar, 4" above the ground and affixed an Al. cap marked in place of pipe. Drove a 5 1/2' long steel post alongside Cor.



SKETCH OF CORNER

CERTIFICATION

I, _____ certify the information shown herein is true and correct.

Signature Ground Party Chief
Stewart Nash L.S. 52105

I, _____ certify that this Corner Record correctly represents work performed by me or under my direction in compliance with the "Corner Recordation Act" (70-22-101, et seq., M.C.A.)

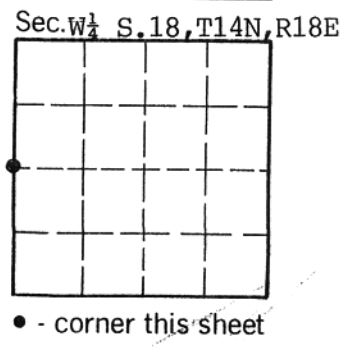
Signature of Surveyor & Seal
Stewart Nash LAND SURVEYOR

Date: 7-15-89 Reg. No. 52105

Employer: SELF

Office of Clerk and Recorder, County of FERGUS. This "corner record" was filed for record on OCT 30 1989 11:30 am was noted on the cross-index plat and is assigned page No. 45, in book No. 3

Robert P. Barrick
County Official



09500

Cross Index No. L-25 T. 14N R. 17E PMM
L-1 14N 18E