

Missoula County Control Point Datasheet

Monument Description: 3-1/4" Aluminum Cap 10998S

Project Name: Ninemile Prairie

Station Description: 1/4 Corner

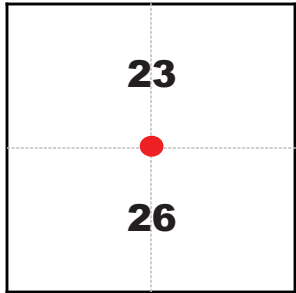
Date Visited: Aug 20, 2010

Monument Stability: C+ GPS Visibility: A+

Observer: SEN - CLG

Quad. Name: Greenough

T. 14 N. R. 15 W.



NAD 83 (2007) Lat/Long Position

46-°56'45.521"N

113°27'42.185"W

NAVD 88 Elevation: 3735.5 sft.

Notes:

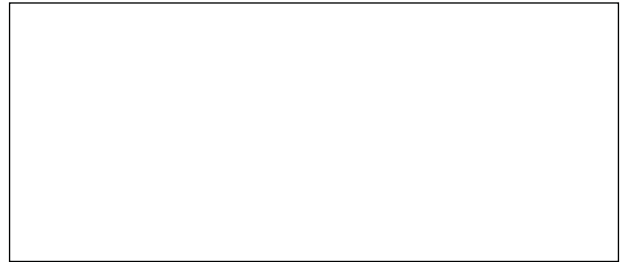


Photo of Monument



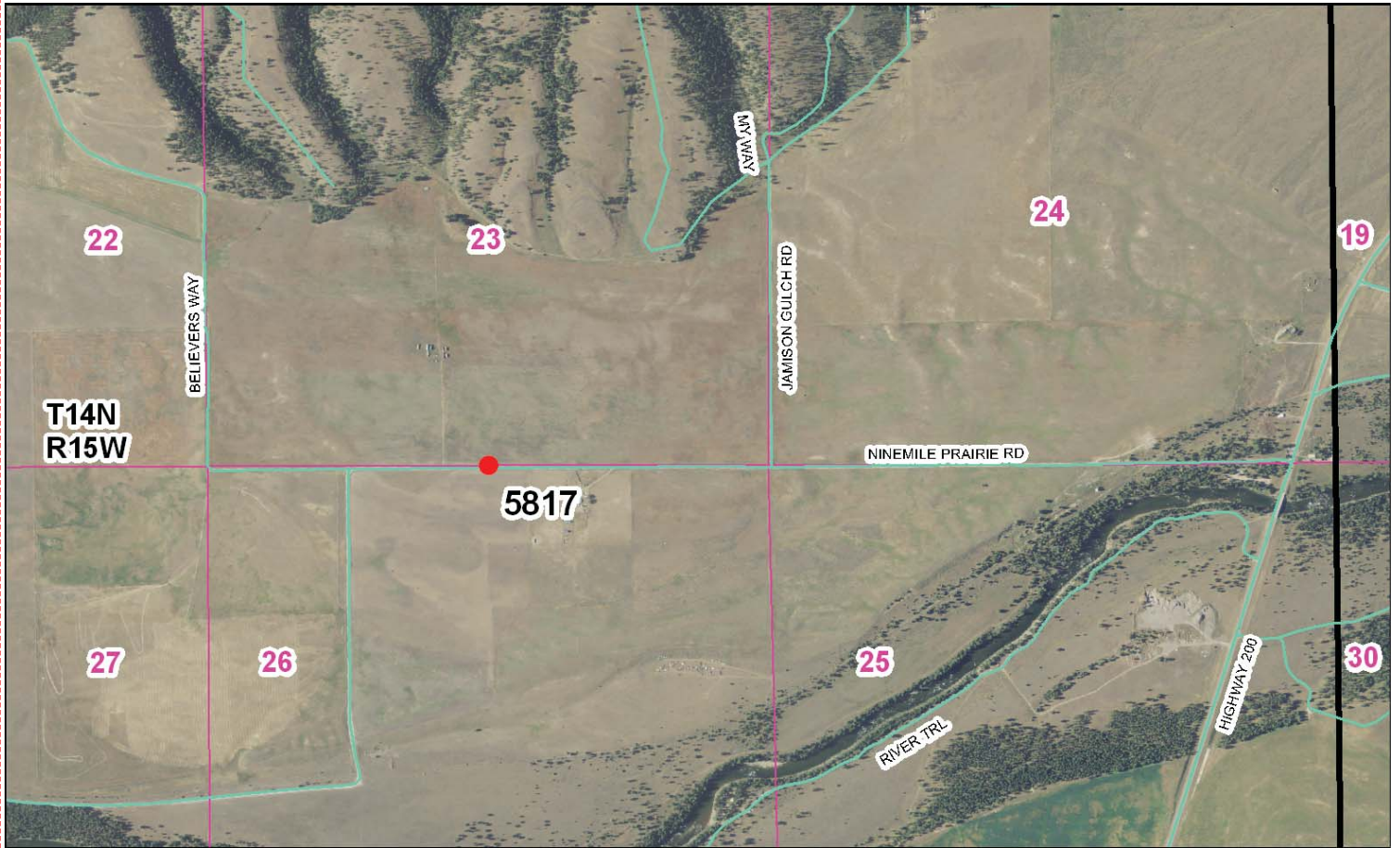
Photo Looking North



Photo Looking East



To Reach: 2wd access.



Map of Area

- INSTRUCTIONS**
- Original and/or subsequent record used to establish the monument.
 - Description of evidence found, with discrepancies in the record, state method of establishing lost or obliterated corners.
 - Description of monument and accessories set to perpetuate the corner position.
 - Method of measuring, including bearings and distances, corner marking, accessories, etc.
 - Certification must be signed and sealed by Land Surveyor registered in the State of Montana.
 - Fill in Cross Index & Section Diagram at bottom of sheet.

CERTIFIED CORNER RECORDATION

1/4 Corner Common to Sections 23 and 26
T. 14 N. R. 15 W. P.M., Missoula County, Montana

RECORD #1: (December 11, 1884) G. L. O. survey by Henry B. Davis

"Set a granite boulder 10 x 10 x 6 ins. in the ground for 1/4 sec. cor. marked 1/4 on N. face, dug pits 18, 18, 12 ins. E. & W. stone 5 1-2 ft. dist. and raised a mound of earth 1 1/2 ft. high, 3 1/2 ft. base alongside."

RECORD #2: (January 20, 1979) Certificate of Survey #1850, by Robert W. Steele

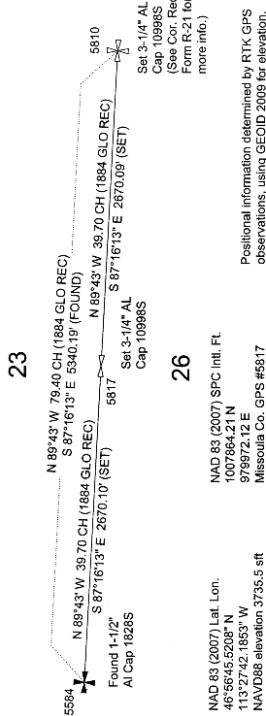
"SET 5/8" X 2 1/4" REBAR W/ 1 1/4" ALUM. CAP"

FOUND: (August 20, 2010) A 5/8" rebar, 8 feet south of the north edge of Ninemile Prairie Road. After an extensive re-plot of PLSS corners in the area, it was determined that this monument was improperly set. Steele used the position of a reference monument, instead of the NW corner of section 26, to calculate a position for the NE corner of section 26. Steele then used the erroneous position for the NE corner of section 26 to calculate the position of this corner.

SET: A 3-1/4" aluminum cap with magnet, marked as shown below, on a 1" by 30" aluminum drivable shaft. This corner falls 5-1/2 feet north of the south edge of Ninemile Prairie Road. From which:

- A 2-1/2" aluminum cap, marked as shown, on a 5/8" x 2 1/4" rebar, bears N 26° E, 28.42 feet.
- A 5/8" rebar, bears N 40° 35' 03" W, 15.30 feet.

I established the position of this corner by single proportionate measurement between the section corners to the east and west.



23

26

NAD 83 (2007) Lat. Lon.
48° 56' 45.5208" N
113° 27' 42.1853" W
NAVD88 elevation 3736.5 sft

N 89° 43' W 79.40 CH (1884 GLO REC)
S 87° 16' 13" E 540.19' (FOUND)
N 89° 43' W 39.70 CH (1884 GLO REC)
S 87° 16' 13" E 2870.10' (SET)
S 87° 16' 13" E 2870.09' (SET)

Found 1-1/2" AL Cap 1828S

Set 3-1/4" AL Cap 10998S

Set 2-1/2" AL Cap RM

Set 3-1/4" AL Cap

Find 5/8" Rebar

N 40° 35' 03" W 15.30'

N 26° E 28.42'

Ninemile Prairie Road

MISSOULA COUNTY SURVEYORS
STATE OF MONTANA
No. 10998S

Signature of Steve Niday
Steve Niday
Reg. No. 10998S
Employer: Missoula County Public Works Survey Office

Date: 10-4-10

Section 23 26

Office of Clerk and Recorder, County of Missoula, Recording Information.

SET 3-1/4" AL CAP

201019164 B: 656 P: 1257 Pages: 1
MISSOULA COUNTY CLERK & RECORDER
VICTORIA R. BAKER, Missoula County Clerk & Recorder

Cross Index No. R-19 T. 14 N., R. 15 W. P.M., M.