

Missoula County Control Point Datasheet

Monument Description: 3-1/4" Aluminum Cap 10998S

Project Name: Ninemile Prairie

Station Description: 1/4 Corner

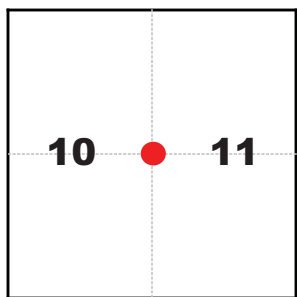
Date Visited: Aug 19, 2010

Monument Stability: C+ GPS Visibility: B

Observer: SEN - CLG

Quad. Name: Greenough

T. 14 N. R. 15 W.



NAD 83 (2007) Lat/Long Position

46°58'57.489"N

113°28'21.211"W

NAVD 88 Elevation: 5073.0 sft

Notes:

Photo of Monument



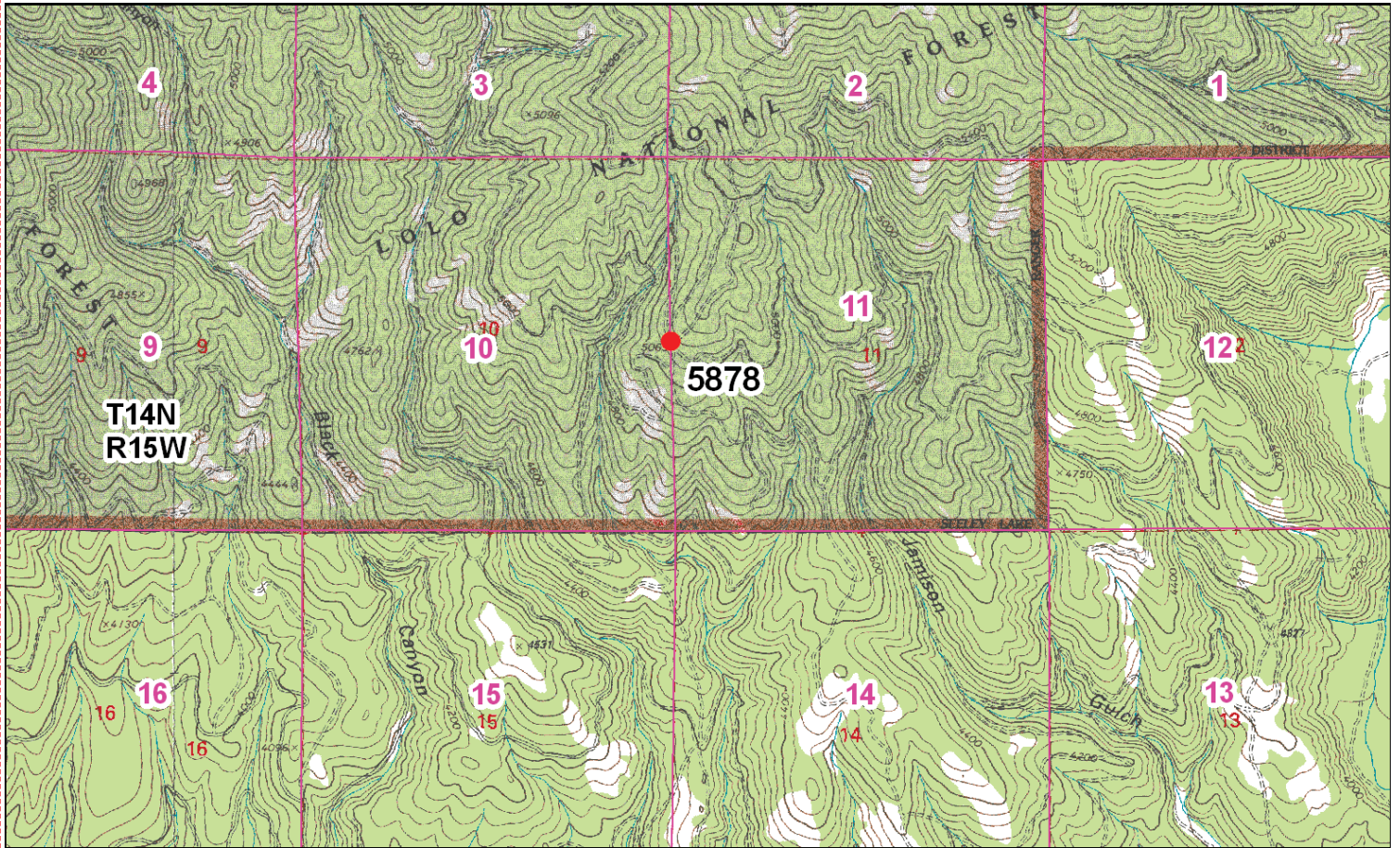
Photo Looking North



Photo Looking South



To Reach: 2wd access with Plum Creek key.



Map of Area

- INSTRUCTIONS**
- Original and/or subsequent record used to establish the corner position.
 - Description of monument and accessories set to perpetuate the corner position.
 - Description of monument and accessories set to perpetuate the corner position.
 - Sketch of corner, show all pertinent data which can best be shown in a sketch example, corner marking, accessories, etc.
 - Fill in Cross Index & Swath Diagram at bottom of sheet.
 - Fill in Cross Index & Swath Diagram at bottom of sheet.

CERTIFIED CORNER RECORDATION

1/4 Corner Common to Sections 10 and 11
T. 14 N. R. 15 W. P. M., Missoula County, Montana

RECORD: (September 3, 1886) G. L. O. survey by Harry V. Wheeler
"Set a sandstone 15 x 8 x 5 ins. 10 ins. in the ground for 1/4 Sec. Cor. marked 1/4 on W. face; from which
A pine 26 ins. diam bears S. 61°50' E. .37 lks. dist. marked 1/4 S. B.T.
A fir 24 ins. diam. bears S. 53°30' W. 71 lks. dist. marked 1/4 S. B.T."

FOUND: (August 19, 2010) No evidence of the original stone. A 24 ins. diam. pine stump, with hatch marks and a hardened face, scribed BT, was determined to be the original bearing tree in the SE quadrant, due to the direction the face was oriented.

SET: A 5/8" x 24" rebar with a 3-1/4" aluminum cap, marked as shown, at record bearing and distance from the found original bearing tree. The corner is located on the west edge of a north-south logging road. From which:

- A 24 ins. diam. by 4 ft. 10 ins. tall pine stump, bears S 62° E, 24.4 ft., scribed BT.
- A 6 ins. diam. Douglas Fir, bears S 03° W, 75.7 ft., scribed RM.
- An 11 ins. diam. Douglas Fir bears N 69° W, 50.8 ft., scribed RM.

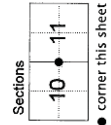
Yellow BT tags were attached to all the bearing trees.

NAD 83 (2007) Lat. Lon. NAD 83 (2007) SPC Intl. Ft.
46°58'57.4893"N 1021346.21 N
113°28'21.2105"W 977946.96 E
NAVD88 elevation 5073.0 sft Missoula Co. GPS #5878

CERTIFICATION
I, Steve Niday, certify the information shown herein is true and correct.

Signature of Surveyor & Seal
Steve Niday
Steve Niday, certify that the above information correctly represents work performed by me or by the employees of my firm, Steve Niday & Son, L.L.C., a Montana Limited Liability Company, under my direct supervision and control.

Date: 9-29-10 Reg. No. 10998LS
Employer: Missoula County Public Works, Survey Office



201019169 B: 866 P.: 1253 Pages: 1
10/04/2010 10:04:13 AM Corner Recordation
Steve Niday - Missoula County Clerk & Recorder

Cross index No. G-17 T. 14 N., R. 15 W. P. M., M.

Corner Recordation Form or Other Supporting Document