

Missoula County Control Point Datasheet

Monument Description: 3-1/4" Aluminum Cap 10998S

Project Name: Ninemile Prairie

Station Description: 1/4 Corner

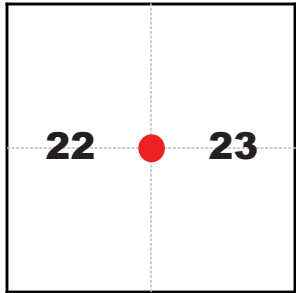
Date Visited: Aug. 4, 2010

Monument Stability: C GPS Visibility: B+

Observer: SEN - CLG

Quad. Name: Greenough

T. 14 N. R. 15 W.



NAD 83 (2007) Lat/Long Position

46°57'12.142"N

113°28'20.972"W

NAVD 88 Elevation: 3731.9 sft.

Notes:

Photo of Monument



Photo Looking South

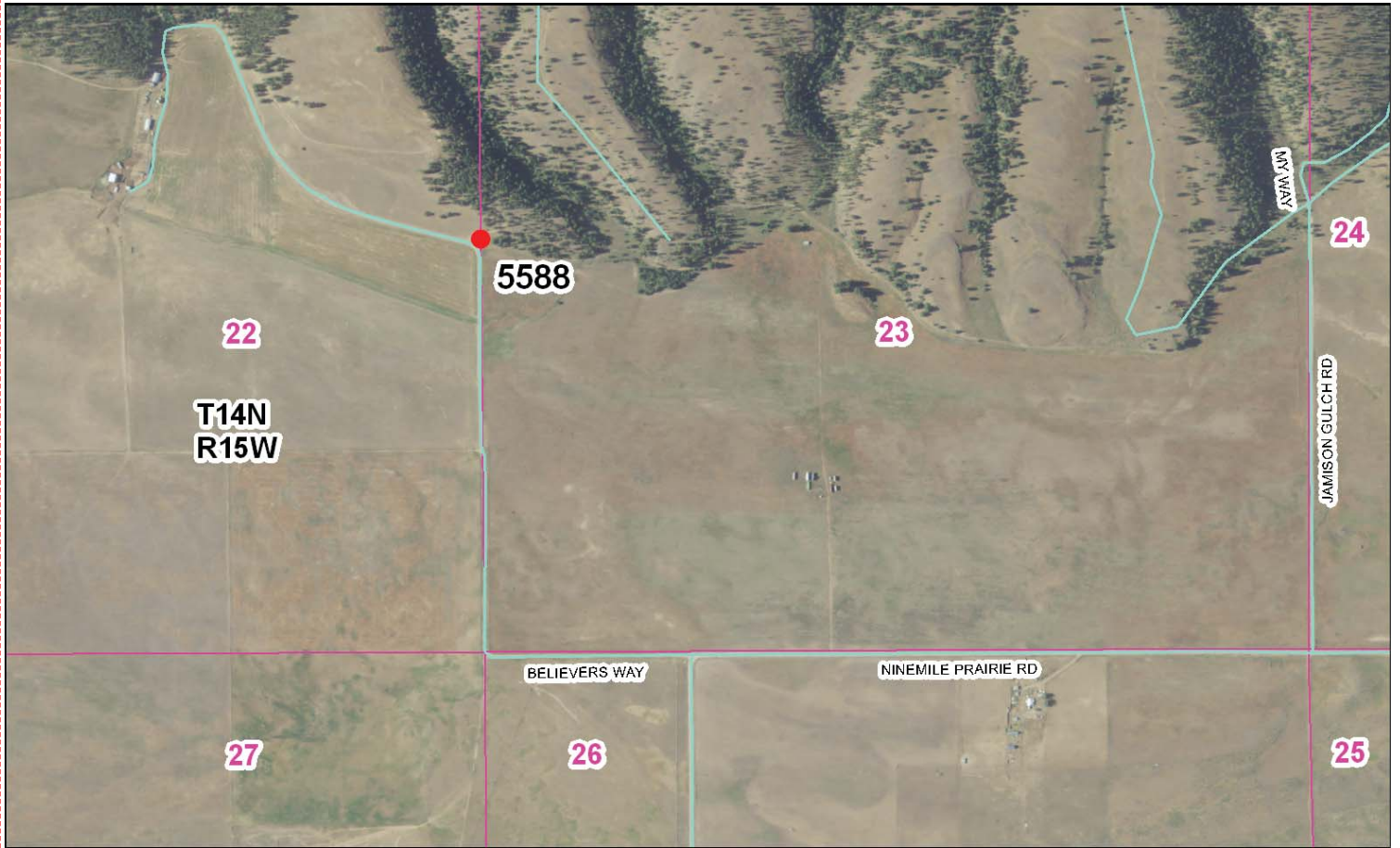


Photo Looking West



Point # 5588

To Reach: 2wd access, walk 75 feet to monument.



Map of Area

INSTRUCTIONS

1. Original and/or subsequent record used to evaluate the corner position.
2. Description of monument and accessories set to perpetuate the corner position.
3. Description of monument and accessories set to perpetuate the corner position.
4. Sketch of corner, show all pertinent data which can best be shown in a sketch, including corner marking, accessories, etc.
5. Name of person or persons who registered in the State of Missouri.
6. Fill in Cross Index & Section Diagram at bottom of sheet.

CERTIFIED CORNER RECORDATION

1/4 Corner Common to Sections 22 and 23
T. 14 N. R. 15 W. P.M., M. Missoula County, Montana

RECORD #1: (December 11, 1884) G. L. O. survey by Henry B. Davis

"Set a granite stone 12 x 7 x 6 ins. 8 ins. in the ground for 1/4 sec cor. marked 1/4 on W face dug pits 18, 18, 12 ins. N + S. stone 5 1-2 ft. dist. and raised a mound of earth 1 1/2 ft. high, 3 1/2 ft. base alongside."

RECORD #2: (August 31, 1886) G. L. O. survey by Harry V. Wheeler

"...the 1/4 Sec. Cor. to Secs. 22 + 23, which is a slate stone 14 x 5 x 2 ins. set 3 ins. in the ground + marked 1/4 on W. face and has a mound of stone alongside, 30 ins. high."

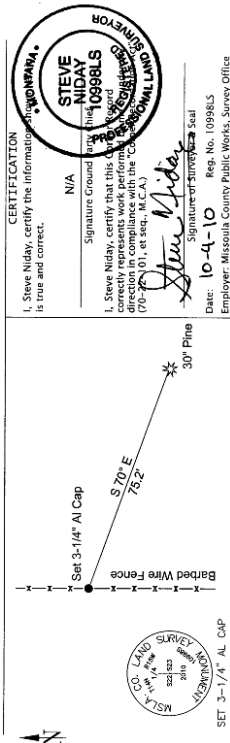
FOUND: (August 4, 2010) A 2" OD iron pipe, in a north - south fence line, on a south facing hillside. After a diligent search of the area for the original stone, I accept the iron pipe as the best available evidence of the original corner position.

SET: A 3-1/4" aluminum cap with magnet, marked as shown, on a 1" x 30" drivable shaft, at the position of the found iron pipe. From which:

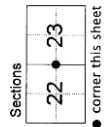
A Ponderosa Pine, 30 ins. diam., bears S 70° E, 75.2 feet, scribed RM,
with BT tag attached.

Two aluminum "U" shaped fence posts bear N and S, 2 feet dist.

NAD 83 (2007) Lat. Lon. NAD 83 (2007) SPC Int. Ft. Positional information determined by static GPS observations, with ties to MSOL, MTUM, and BT00, using GEOID 2009 for elevation.
46°57'12.1419"N 1010692.36 N
113°28'20.9719"W 977422.72 E
NAVD88 elevation 3731.8 sft Missoula Co. GPS #5588



CERTIFICATION
I, Steve Niday, certify the information furnished herein is true and correct.
Signature: Steve Niday
Date: 10-4-10
Reg. No. 10998LS
Employer: Missoula County Public Works, Survey Office



Office of Clerk and Recorder, County of Missoula, Recording Information.
201015162 B. 565 P. 1255 Pages: 1
10-04-10 10:24:53 AM
Vivian R. Zales, Missoula County Clerk & Recorder

Cross Index No. P-17 T. 14 N., R. 15 W. P.M.,M.

Corner Recordation Form or Other Supporting Document

Point # 5588