

Missoula County Control Point Datasheet

Monument Description: 3-1/4" Aluminum Cap 10998S

Project Name: Ninemile Prairie

Station Description: 1/4 Corner

Date Visited: Aug 20, 2010

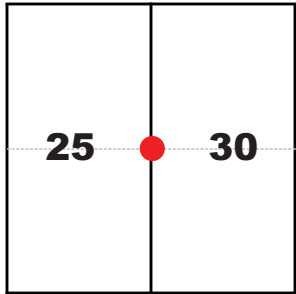
Monument Stability: C GPS Visibility: A+

Observer: SEN - CLG

Quad. Name: Greenough

T. 14 N.

R. 15 W. R. 14 W.



NAD 83 (2007) Lat/Long Position

46°56'19.608"N

113°25'46.110"W

NAVD 88 Elevation: 3769.2 sft.

Notes:

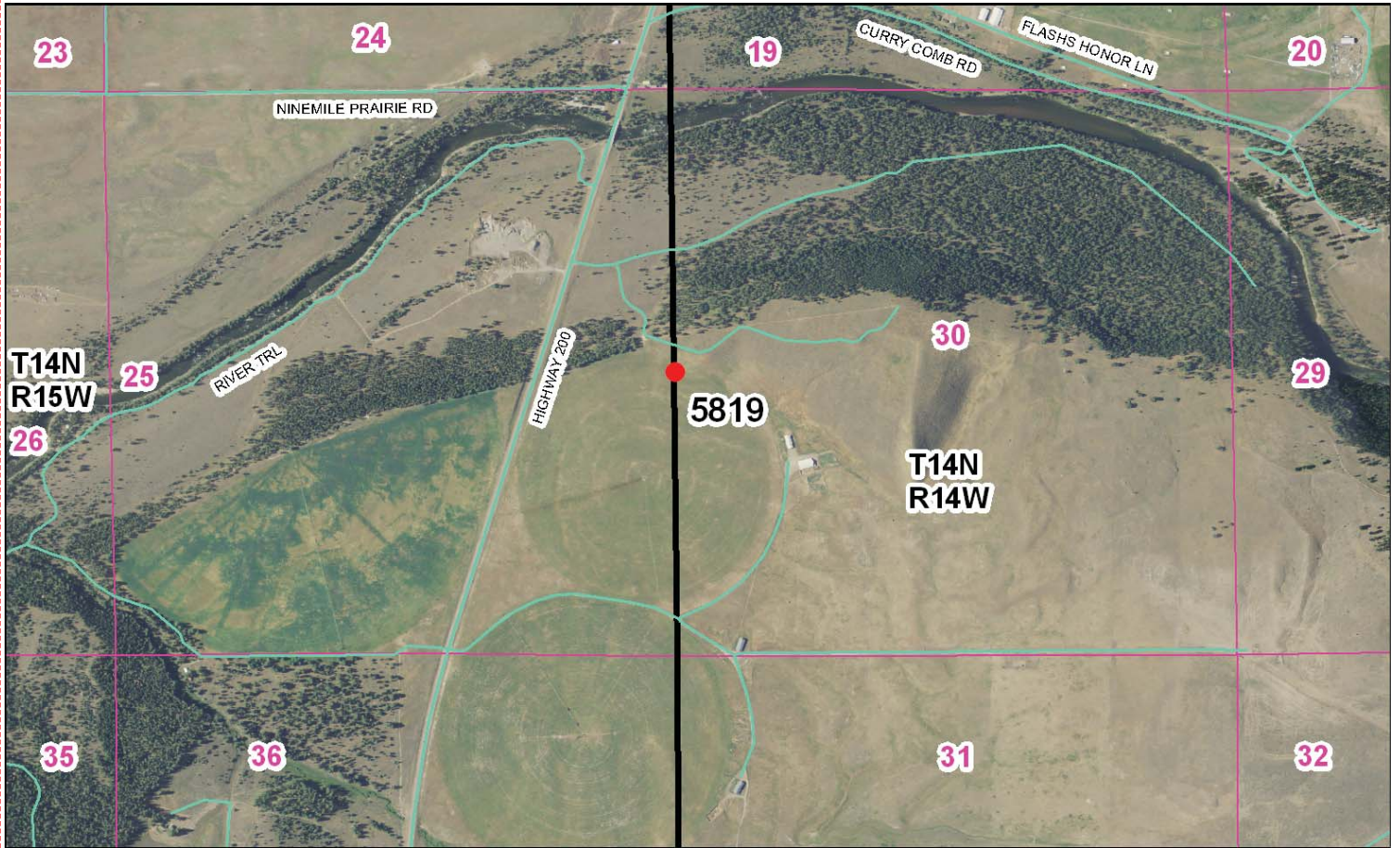
Photo of Monument



Photo Looking North



To Reach: 2wd access with permission from Paws Up Resort.



Map of Area

- INSTRUCTIONS**
1. Original and/or subsequent record used to evaluate the corner position.
 2. Description of monument and accessories set to perpetuate the corner position.
 3. Description of monument and accessories set to perpetuate the corner position.
 4. Sketch of corner, show all pertinent data which can best be shown in a sketch example, corner marking, accessories, etc.
 5. File in Green Index & Section Diagram at bottom of sheet.
 6. File in Green Index & Section Diagram at bottom of sheet.

CERTIFIED CORNER RECORDATION

1/4 Corner Common to Sections 30 and 25
T. 14 N. R. 14 W. and R. 15 W. P.M., M. Missoula County, Montana

RECORD: (December 8, 1884) G. L. O. survey by Henry B. Davis

"Set a granite stone 12 x 10 x 6 in. in the ground for 1/4 sec. cor. marked 1/4 on W. face, dug pits 18, 18, 12 ins. N. + S. of stone 5 1-2 ft. dist. and raised a mound of earth 1 1/2 ft. high, 3 1/2 ft. base alongside."

FOUND: (August 20, 2010) No evidence of the original monument.

SET: A 3-1/4" aluminum cap with magnet, marked as shown, on a 1" x 30" drivable aluminum shaft, 2 feet below the ground surface.

I established this position by single proportionate measurement, using the 1884 GLO record, between the section corners to the north and south. See reverse side of this form for measurements.

This corner falls in a cultivated field, therefore no suitable objects were available for reference.

NAD 83 (2007) Lat. Lon. Positional information determined by
46°56'19.6079"N 1004838.49 N RTK GPS observations, using
113°25'46.1095"W 987879.14 E GEOID 2009 for elevation.
NAVD88 elevation 3769.2 sft Missoula Co. GPS #5819

CERTIFICATION
I, Steve Niday, certify that the information furnished on this form is true and correct.

Signature of Surveyor
N/A

Signature of Steve Niday
I, Steve Niday, certify that this record correctly represents work performed by me or under my direct supervision in the State of Montana (70-2-201) (at Stpt. M.C.A.)

Date: 10-4-10 **Reg. No.:** 10988LS
Employer: Missoula County Public Works, Survey Office

Signature of Steve Niday

Signature of Surveyor

Section
25 30
● corner this sheet

201019167 B: 866 P: 1260 Passes: 2
10/04/2010 10:07:47 AM Corner Recordation
Vickie R. DeHart, Missoula County Clerk & Recorder

MISSOULA COUNTY LAND SURVEY MONUMENT
T14N R14W S21 150 10988

SET 3-1/4" AL CAP

Office of Clerk and Recorder, County of Missoula, Recording Information.

Corner Recordation Form or Other Supporting Document