

Missoula County Control Point Datasheet

Monument Description: 3-1/4" Aluminum Cap 10998S

Project Name: Ninemile Prairie

Station Description: Section Corner

Date Visited: Aug 20, 2010

Monument Stability: C GPS Visibility: A+

Observer: SEN - CLG

Quad. Name: Greenough

T. 14 N.

R. 15 W. R. 14 W.

25	30
36	31

NAD 83 (2007) Lat/Long Position

46°55'53.157"N

113°25'45.881"W

NAVD 88 Elevation: 3747.5 sft.

Notes:

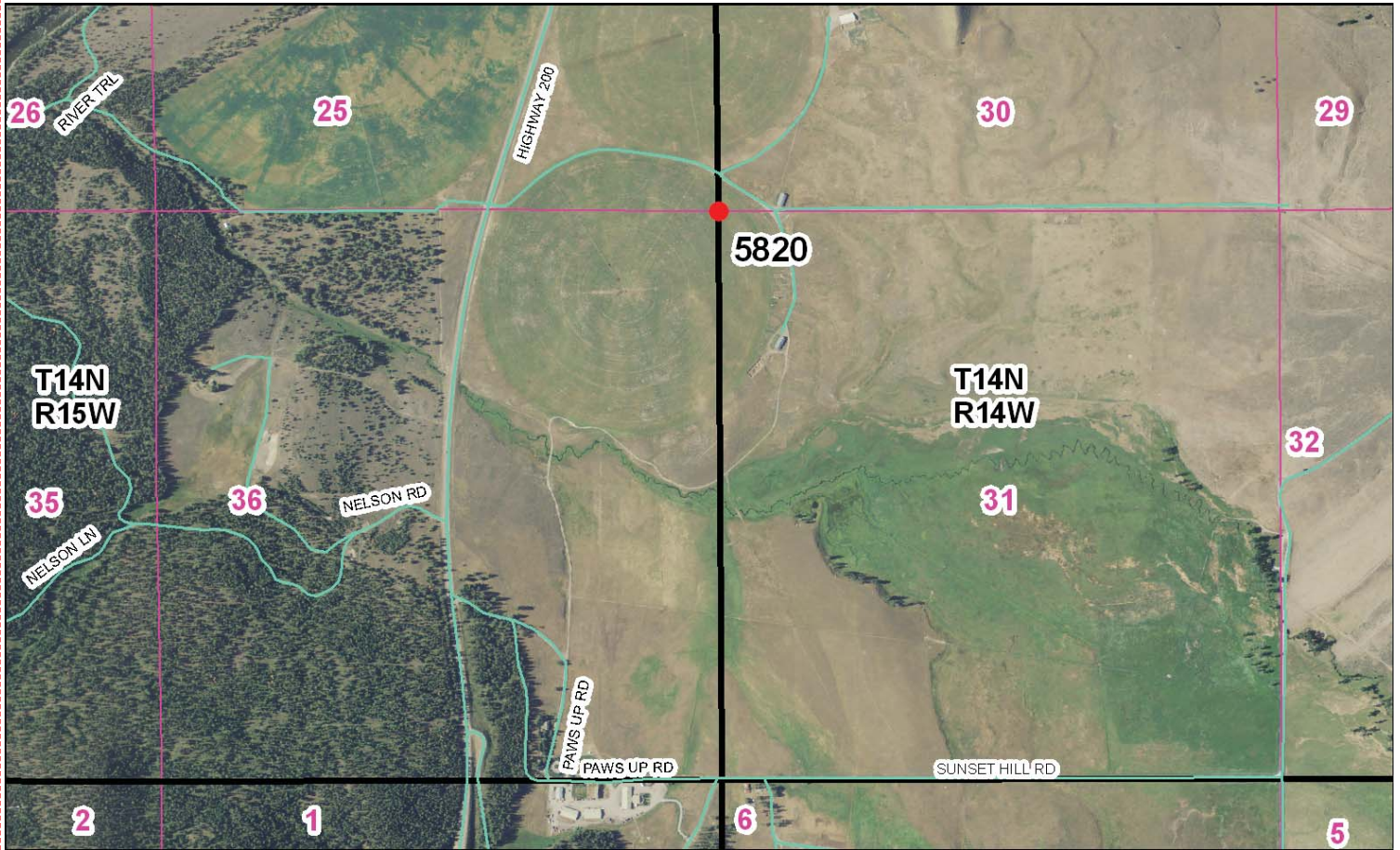
Photo of Monument



Photo Looking East



To Reach: 2wd access with permission from Paws Up Resort.



Map of Area

- INSTRUCTIONS**
1. Original and/or subsequent record used to establish the corner position.
 2. Description of monument and accessories set to perpetuate the corner position.
 3. Sketch of corner, show all pertinent data which can best be shown in a sketch example, corner marking, accessories, etc.
 4. If the corner is a monument, show its location and registration in the State of Missouri.
 5. Fill in Cross Index & Section Diagram at bottom of sheet.

CERTIFIED CORNER RECORDATION

Corner Common to Sections 30, 31, 25 and 36
T. 14 N. R. 14 W. and R. 15 W. P.M., M. Missoula County, Montana

RECORD #1: (December 8, 1884) G. L. O. survey by Henry B. Davis
"Set a granite stone 16 x 8 x 6 in. 11 in. in the ground for cor. to Secs. 25, 30, 31, 36, marked 1 notch on S. and 5 on N. edges, dug pits 18, 18, 12 ins. in each sec. 5 1-2 ft. dist. and raised a mound of earth 2 ft. high, 4 1/2 ft. base alongside."

RECORD #2: (April 24, 1889) G. L. O. retracement by Harry V. Wheeler
"At 161.80 Chs. intersect E. & W. line 139 lks E. of Cor to Secs. 19, 24, 25 + 30, which is a Slate stone 16 x 6 in. 8 ins. above ground, property marked, with 4 foot mound of earth."

RECORD #3: (July 10, 1983) Corner Recordation Form #8312698, by Robert W. Steele
"No trace of the stone or pits was found due to intensive agriculture and irrigation."

Since this corner is on a meridian and constitutes a range line for the township involved; single proportion measurements are required to re-position the corner. The drawing at left shows these measurements.

I set a 3 inch brass cap atop an iron pipe deep enough in the ground to avoid mowing machinery."

FOUND: (August 20, 2010) A 2-1/2" brass cap atop a 2-1/2" iron pipe, lying on its side, just underground.

SET: A 3-1/4" aluminum cap with magnet, marked as shown, on a 1" x 30" drivable aluminum shaft, 1.9 feet below the ground surface.

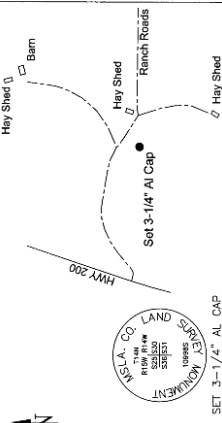
I established this position by single proportionate measurement, using the 1889 GLO record, between found section corners to the north and south. See reverse side of this form for measurements.

This corner falls in a cultivated field, therefore no suitable bearing objects were available.

NAD 83 (2007) Lat.-Lon. NAD 83 (2007) SPC Init. Ft.
46°55'53.1574" N 1002162.89 N
113°25'45.8807" W 987760.69 E
NAVD89 elevation 3747.5 ft Missoula Co. GPS #5820

Positional information determined by RTK GPS observations, using GEOID 2009 for elevation.
CERTIFICATION
I, Steve Niday, certify the information on this record is true and correct.

Signature of Surveyor & Seal
STEVE NIDAY
Surveyor
Missoula County, Montana
Date: 10-14-10 Reg. No. 10996LS
Employer: Missoula County Public Works, Survey Office



Section
25 30
36 31
Office of Clerk and Recorder, County of Missoula, Recording Information.

201018168 B. 585 P. 1261
10/04/2010 10:07:47 AM
Vickie R. Ziser, Missoula County Clerk & Recorder

V-1 T. 14 N., R. 14 W.
Cross Index No. V-25 T. 14 N., R. 15 W. P.M., M.