

INSTRUCTIONS

1. Original and/or subsequent record used to evaluate the corner position.
2. Description of evidence found, note discrepancies in the record, state method of establishing lost or obliterated corners.
3. Description of monument and accessories set to perpetuate the corner position.
4. Sketch of corner, show all pertinent data which can best be shown in a sketch example, corner marking, topography ties, position of accessories, etc.
5. Certification must be signed and sealed by Land Surveyor registered in the State of Montana.
6. Fill in Cross Index & Section Diagram at bottom of sheet.

CERTIFIED CORNER RECORDATION

1/4 Corner SECTIONS 9 & 16 T. 14N R. 10W P.M.M. Powell County

ORIGINAL RECORD: (1905 GLO) "Set a fir post 3 feet long 3 in. sq., 24 ins. in the ground, for 1/4 sec. cor., marked 1/4 S 9 on N., and 16 on S. face; from which:

- A fir, 9 ins. dia., bears N.42°30'E., 18 lks. dist., marked 1/4 S 9 B T.
- A fir, 15 ins. dia., bears S.34°30'W., 10 lks. dist., marked 1/4 S 16 B T."

EVIDENCE FOUND: Found remains of rotted wooden post in ground, from which:

- A dead 16" fir snag bears N42°E, a distance of 12 feet, scribed "1/4 S 9 B T"
- A dead 22" fir snag bears S34°W, a distance of 6.6 feet, scribed "1/4 S 16 B T"

PERPETUATION: Set a 3/4" diameter x 30" rebar with 3/4" aluminum cap marked as shown below, the corner was reestablished using location of rotted post hole, from which established the following new accessories:

- An 8" Douglas fir bears N24°E, a distance of 47.7 feet, scribed "S 9"
- A 7" Douglas fir bears S22°E, a distance of 23.4 feet, scribed "S 16"

Set a Steel post with Land Survey Monument decal.

All BT's have BT signs, snow blazes and red painted rings.

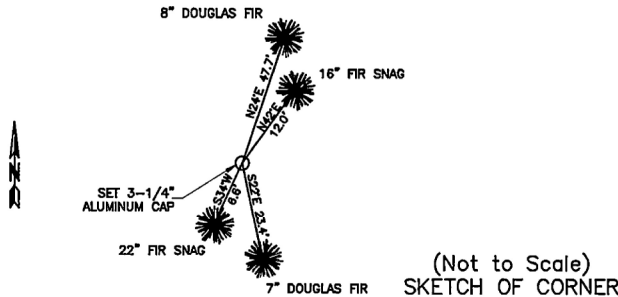
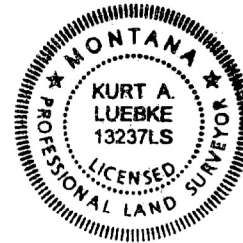
Date of Survey: July 2014

Compass declination 14°

SEE BACK OF FORM FOR SECTION INFORMATION



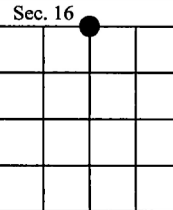
NAD 83 coordinates for this corner:
 Latitude = 46°58'36.765"N Longitude = 112°52'11.225"W
 NOTE: These coordinates are to be used as a search tool only.



CERTIFICATION
 I, Jeff Cyr, PLS (13103LS)
 certify the information shown herein is true and correct.
 Signature of Ground Party Chief
 I, Kurt Luebke
 certify that this Corner Record correctly represents work performed by me or under my direction in compliance with the "Corner Recordation Act" (70-22-101, M.C.A.)
 Signature of Surveyor & Seal
 Date: November 17, 2014 Reg. No. 13237
 Employer: DJ&A P. C.

Office of Clerk and Recorder, County of _____ This "corner



r **172091 Fee: \$0.00 Bk Pg**
 POWELL COUNTY Recorded 11/26/2014 At 11:35 AM
 Diane S. Grey, Clk & Rcdr By [Signature] in
 Return To: **FILING**

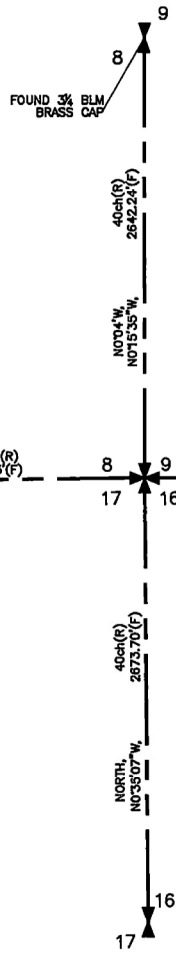


● - corner this sheet

Cross Index No. J-11 T. 14N R. 10W PMM

LEGEND

-  SET 3/4"x30" REBAR WITH 3-1/4" A.C. MK'D LUEBKE 13237LS
-  SET 3/4"x30" REBAR WITH 3-1/4" A.C. MK'D LUEBKE 13237LS
- (F) FOUND
- (R) RECORD - GLO



SECTION 16 T.14N., R.10W., PMM

